



SMP

The Colorado College 2022

hand book

The Colorado College Summer Music Festival 2022



Table of Contents

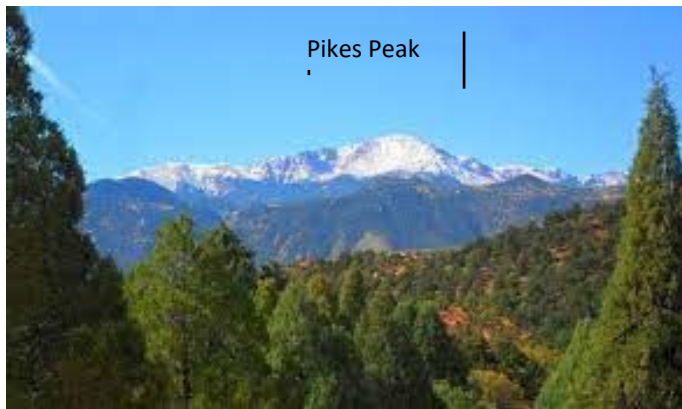
4	Basics	9	Colorado Springs Local Attractions
4	Weather	9	Biking
4	What to Bring	9-10	SMF Conduct Policies
5	Instrument Care	10	Check-Out Procedure
5	Traveling to Colorado College	10	Alumni
5	Driving Directions and Parking	10	Contact Information
6	Housing	11	Testimonials
6	Dining	12	Campus Map
6	Arrival and Departure	13	Map of Downtown CS
7	Festival Check-In	14	Concert Schedule
6	Festival Fees	15	2022 Faculty and Staff
7	Auditions		
7	Concerts		
7	Concerto Readings		
7	Concert Dress		
8	SMF Facilities		
8	Box office and Tickets		
9	Student Life		
9	Wi-Fi		
9	Mail and Communications		
9	Health Services		
9	Campus Recreation		

Basics

Weather

Colorado Springs is the second largest city in Colorado with an altitude of 6,035 feet above sea level, and is known for its moderate temperatures throughout the year. The average number of days of sunshine is 300 and the average snowfall is 37 inches per year.

Colorado Springs is close to the mountains so the weather can change at a moment's notice. Summer can become quite warm, but remember to pack an umbrella and or rain jacket as thunderstorms often move in during the afternoons. You'll probably need a light jacket or sweater for cool summer nights. We are considered high mountain desert, so the humidity is usually quite low compared to other regions of the U.S.



High Altitude

Colorado has the highest average elevation of any of the states and has many opportunities for hiking, biking, rock climbing, etc. If you come from an area which is lower in elevation, you may want to give your body a few days to acclimate itself with the elevation. Some people experience "altitude sickness" or acute mountain sickness due to the decreased amount of oxygen in the air at higher elevations. Symptoms can be shortness of breath,

nausea, dizziness, increased heart rate, and insomnia. To prevent or reduce the symptoms of altitude sickness here are a few things to keep in mind:

- Give your body time to adjust (there is a lot to see and do at lower altitude).
- Stay below 7,000 feet and avoid strenuous exercise for the first few days
- Drink lots of fluids, especially water, and avoid alcohol.

What to Bring

- Sunscreen and lip protection, sunglasses, lightweight layers, rain jacket, umbrella, athletic shoes, water bottle, casual attire, and swimsuit (for a pool party!)
- Wire music stand (optional)

String Players

It is highly advisable for string players to bring "dampits" for your instruments. Summer humidity levels in Colorado Springs are frequently in the 10-20% range.



Outings

We have planned at least two organized trips off campus, including a hike in the Garden of the Gods and the Red Rocks Open Space. Please bring appropriate attire for hiking if you plan to participate in these events (athletic shoes or light hiking boots are suggested; sandals not recommended).

Instrument Care

Storage

All festival fellows will receive a key to a locker in Packard Hall, where they can store their instrument.

Repair

If any instruments are in need of repair during your stay, we will help you find a repair center.

Travel to Colorado College

Air

If you are traveling by air, please be sure to let us know ALL the important information about your arrival, including: carrier, flight numbers, arrival times (indicate a.m. or p.m.), and WHICH airport, DIA in Denver, or COS in Colorado Springs. Be sure to let us know if you have multiple stops, and times for all legs of your journey. Enter your information on the shared google doc sent previously. The driver picking you up at either the airport or shuttle drop off will take you directly to your apartment for check in.

If you are flying into **Colorado Springs** and have sent us your flight information, we will pick you up from the airport. After you collect your luggage look for a marked Colorado College van. If it is not there, wait; it may be on a round trip to the College and will return shortly. A Festival assistant will be in charge of the pick-up schedule. Please be sure to notify us of any flight or travel delays. We will provide you with cell phone numbers to reach us.

If you are arriving to **DIA in Denver**, you can book a shuttle through [Groome transportation](#). For your drop off in Colorado Springs, be sure to select Hotels/Lodging, and then The Antlers—S. Cascade for your drop off in Colorado Springs. We will pick you up in front of the Antlers

which is just blocks away from the campus. The shuttle runs every hour. It is around \$60 one way. Let us know if you have booked the shuttle and when you plan to arrive at the Antler's Hotel.

Make your shuttle arrangements before you arrive as most services require 24 hour advanced reservations to guarantee service. Most years it is not possible for us to pick up fellows from the Denver airport. If there are at least 6 fellows arriving at DIA within a two hour window, we will arrange a van to drive to Denver.

If you are arriving by bus

Let us know when your bus will be arriving and departure time. We will provide transportation from and to the bus station in downtown Colorado Springs.

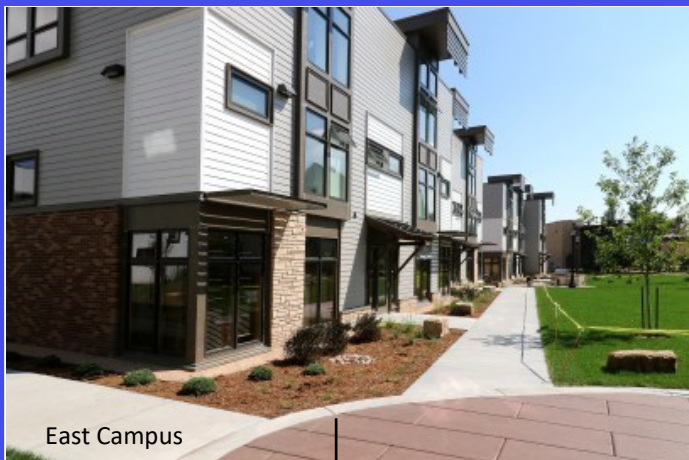
If you are traveling by car

If you plan to arrive by car, please advise us of an estimated arrival time and when you plan to leave your departure city.

Please come directly to the E-1 parking lot (access is from Weber Street) where you will check in and receive your room key, meal/access card, and a parking permit. See the campus map to find the East Campus apartments and E-1 parking lot. It is best to keep your car parked in this lot and to walk to Packard Hall to for Festival registration.

Driving Directions and Parking:

If you are driving on I-25, take the Uintah exit #143 and turn east (away from the mountains). Drive up the hill and turn right on Weber Street. Continue south to E. San Rafael St, turn left and head straight to E1 parking to the right. You will pass the Hybl Community Center where your housing check in will take place.



East Campus

Housing & Dining

Housing

Each fellow will have a private room in the East Campus Apartments, with shared bathrooms, living spaces and kitchens.

Every room has bed linens, towels, a bar of soap, and plastic cups for each individual.

Linen and Laundry

Linen Changes - Linen changes will occur every Friday. In order to receive new linen, please place your current towels and/or bed linen outside your door **by 10:00 am**.

Personal Laundry – Washers and dryers are located in the Hybl Community Center laundry room. There is no charge to use the machines.

Dining

Dining is in Rastall Dining Hall, located in Worner Campus Center (see map). The first meal available for Music Festival fellows will be dinner on June 4 and the final meal served will be dinner on June 24. Grocery runs will also be scheduled for breakfast foods and snacks. Shared kitchens will have limited disposable plates, bowls, cutlery, coffee pots and tea kettles.

Arrival and Departure

Please plan to arrive on campus no earlier than 8 a.m. on June 4, and no later than 8 a.m. on June 5. Residence Halls will be available for check-in at 8 a.m. on Saturday, June 4. Check out will be no later than 11 a.m. on Saturday June 25. **Late arrivals and early departures are not acceptable unless pre-approved.** There will be a general meeting at 8:45 a.m. on June 5 with a light continental breakfast served. .

When you arrive on campus you will need to check in at **Hybl Community Center** on the East Campus where you will be provided with a room key and directions to your apartment. The Hybl Center will be open between the hours of 8 a.m. and 8 p.m. If you plan on arriving during the hours when the desk is closed you must let us know in advance so that we can arrange for you to pick up your keys at a different location (either South Hall or at Campus Safety) .

Festival Check In

Check in with the Festival Office for will take place from **2 to 6 pm** on June 4 at Packard Hall and again the next morning June 5 starting at 7:30 a.m. at Packard Hall until the general meeting at 8:30 . You will receive the daily schedule, some studio and locker keys, and forms to sign.

Festival Fees

All festival fellows attend on a full scholarship, valued at \$3,000. The scholarship includes tuition, room, lunch and dinner meals, and a number of extra-

curricular activities such as field trips.

The following fees are not included in the scholarship:

\$75 application fee (non-refundable)*

\$200 registration fee, required upon acceptance (\$25 to be refunded at the end of the festival upon the return of locker keys and sheet music).

\$100 deposit upon check-in at Hybl Community Center. (Returned upon checkout)

Auditions

A detailed daily schedule will be available at registration. All festival fellows and faculty are expected to meet at the performance hall in Packard Hall at 8:45 a.m. on June 5 for a brief meeting and introductions. This will be followed by auditions for all fellows. The purpose of these auditions will be to form chamber music groups and to seat those not pre-assigned in the orchestra. You will be asked to play a short piece of your choice as well as orchestral excerpts. Accepted fellows have received an email with a link to the excerpts. It is also posted on the SMF website. Pianists will be required to play a short solo piece for auditions since music has been pre-assigned.

Concerts

There are four Festival Orchestra concerts:

- Saturday, June 11 at 7 pm on the Tava Quad for our Outdoor Celebration. We will be joined by the Pink Hawks from Denver who will play following the short orchestra concert.
- Tuesday, June 14 at 7:30 p.m., in the Celeste Theatre / Edith Kinney Gaylord Cornerstone Arts Center
- Thursday, June 16 at both 9 and 11am in the Celeste Theatre/ E.K.G. Cornerstone Arts Center

- Friday, June 24 at 7:30 p.m. in the Celeste Theatre/ EKG Cornerstone Arts Center

In addition, there are seven midday chamber music concerts in Packard Hall starting on June 13 at 12:15. These concerts give all festival fellows an opportunity to perform in their chamber ensemble before a live audience.

There will be two to three outreach concerts: one at Hillside Community Center, one at Gold Hill Mesa, and possibly at Brookdale Senior Living.

Music Festival faculty will present five concerts during the festival, and all fellows are required to attend. Some of you have been invited to perform in these concerts.

All on-campus fellow concerts are recorded and will be available online.

Concerto Readings

All fellows have been invited to audition to read one movement of a concerto with the Festival Orchestra. Auditions will be held early in the festival. The readings will be open to the public on Saturday, June 18 at 2 p.m. Concertos must be performance ready. All concertos must be pre-approved depending on availability of music. If you have questions about the concerto music, please email our music librarian, Daryl Stevens, at dstevens@ColoradoCollege.edu.

Concert Dress

For orchestra concerts the attire will be all black. Men should bring a black long-sleeved shirt, black dress pants and black shoes. In addition, please bring a dark solid-colored long tie. Women should wear a black long or 3/4 length sleeve blouse, black skirts that fall below the knee or black



evening slacks and black shoes. Sleeveless blouses are not acceptable for orchestra concerts.

For music at midday concerts, fellows should have dress slacks, black or white shirts or wear dressy daytime attire. Low riding, midriff-baring, tight fitting, and low-cut décolleté fashions are not appropriate for concerts and will not be permitted. No jeans for any concerts.

For festival artist concerts, fellows should have black dress slacks or pants, and a black shirt. A black skirt with a colored top is permitted. For music at midday, dress shirts and dresses in colors are welcome.

SMF Facilities & Tickets



Packard Hall houses the Albert Seay Library of Music and Art, an extensive collection of scores, recordings, and books

about music. The building also contains the Performance Hall, practice rooms, classrooms, and lockers. You may check out keys to lockers and practice rooms, music stands, as well as music from the library. If you would like to practice in your dorm room, you will need to bring your own music stand.

The E.K. Gaylord Cornerstone Arts Center houses the Celeste Theatre where all the Festival Orchestra and Children's Orchestra concerts will take place. The percussion room is also in Cornerstone and the Flex Room is used for many rehearsals. The Main Space will host the annual donor luncheon and the celebration following the June 14 Festival Orchestra concert.

When all are returned at the end of the festival, \$25.00 of your registration fee will be returned to you upon checkout.

Box Office and Tickets

Festival Artist Concerts

\$35 General Public
\$30 Donors
\$5 All Students
Free for Colorado College Students, Faculty and Staff

Festival Orchestra Concerts

\$30 General Public
\$25 Donors
\$5 All Students and Children
Free to all Colorado College Students, Faculty and Staff

The Concert in Honor of Peggy Shivers on June 7, the Outdoor Festival on June 11, the Children's Concert on June 16, and the midday concerts are free. Festival Fellows can purchase (2) \$5 tickets per concert for family members.

Student Life

Wi-Fi

All living spaces will have guest access to our Wi-Fi in the residence and academic halls. Information regarding computer access will be provided upon check-in.

Mail and Communications

If you will be receiving mail, please have it sent to:

c/o Colorado College Summer Music Festival
Department of Music
14 East Cache la Poudre Street
Colorado Springs, CO 80903

Health Services

Although the Music Festival is not responsible for securing the professional services of a physician, if such services are required, fellows may request referrals to local doctors.

Campus Recreation

The college is located next to the Monument Valley Trail which is great for running and walking. Fellows will also have access to the Adam Press Fitness Center and Schlessman Natatorium in our El Pomar Sports Center. Hours will be provided upon arrival.

Colorado Springs Local Attractions

There are many local attractions within walking distance of the Colorado College Campus. The Fine Arts Center and Money Museum are very close to the campus.

Downtown Colorado Springs is just a few blocks south and is home to a variety of art galleries, shops, museums, and restaurants as well as the beautiful Acacia Park. (map of downtown on page 12.)

Other local attractions in the Colorado Springs area will require transportation from campus.

[Manitou Springs](#)

[The Manitou Incline](#)

[The Broadmoor](#)

[Seven Falls](#)

[Pikes Peak](#)

[Pikes Peak Cog](#)

[Railway](#)

[Garden of the Gods](#)

[Red Rocks Open Space](#)

See more information on what to do in [Colorado Springs](#).

Biking

Colorado Springs and Colorado College has great electric bike and scooter services, with hubs on the campus. See more at [CCPikeRide](#) and [Downtown Pike Ride](#) and [Downtown E-scooters](#).



SMF Conduct Policies

Enrollment obligates festival fellows to conduct themselves as responsible members of the Colorado College Summer Music Festival. Behavior on or off campus that discredits the individual or the Music Festival may result in disciplinary action. The Colorado College Summer Music Festival reserves the right to suspend or expel a fellow regarded as being in conflict with the best interests of the College and in violation of its rules and regulations. Refer to the Colorado College [Pathfinder](#) for conduct policies for the college.

Check-Out Procedure

Check out from the residence halls will be no later than 11 a.m. on Saturday, June 25 at Hybl Community Center. You will need to return your access/meal card and key in order to receive your deposit. Fees for any lost or damaged cards or keys, or damage to your room will be taken out of your deposit. There is a \$15 replacement fee for access/meal cards and a \$75 charge for room keys. Festival check-out will begin immediately after the final concert until 10:30 p.m. and will open again on June 25 at 7:30 a.m. If you are leaving earlier than 7:30 a.m. please complete check out the night before.

Alumni Information

We encourage you to keep us informed of your performances and other successes in your career. Please let us know if you are offered a position with an orchestra, are teaching at a school, or place in a competition. Send your information to festival@coloradocollege.edu and then please ask to join our private alumni Facebook page, "Colorado College Summer Music Festival Alumni."



Testimonials

What did you love most about the festival?

"The intensity, the location, the people, and everything that went along with those. It was an incredible experience to be pressured to prepare such difficult music to such a high standard in such a short amount of time. I have grown tremendously as a musician because of the demands placed on me. The size of this festival is perfect; having a small number of people raises the performance level because of higher competition for admission. It also allows everyone to get more experience performing, leading, and listening than would be possible at a larger festival, not to mention a closer interaction with the faculty. Scott also caters the festival towards training its musicians to win jobs - I greatly appreciate this."

"Literally everything... I honestly feel like there were no flaws at all with the program. Most of all, I loved working with Scott. Love his intensity and passion. I feel like I played my absolute best under him."

"I loved how everyone pushed each other to a very high standard but still kept the festival extremely fun. All the performances were at a very high level and at the same time there was this incredible lightheartedness between all the musicians."

"The faculty! They are amazing! Getting to play with them was an incredible experience! And the Fellows! Everyone is at such a high playing level. It's a joy to play with such wonderful musicians."

"Close contact with faculty, Scott Yoo, and the fantastic quality of the faculty concerts. Collaborating and learning at the same time - it's like if you're going to be a professional someday, why not start now?"





Color and number next to name indicate block and side of the block where the business is located.

- Shopping/Dining Core
- Parks & Open Space
- Fountain
- Trails/Trail Access

Visitor Information
(Acacia Park site is seasonal)

Transit Hub

Public Parking
(City-operated)

Public Parking

PikeRide
bike share station



- Districts
- Near North End
 - City Center
 - East End
 - Southwest
 - New South End

April 2018

SUMMER MUSIC FESTIVAL CONCERT SCHEDULE 2022

Tuesday	June 7	Concert in Honor of Peggy Shivers with Brian Majors, <i>baritone</i>	7:30 pm	Packard Hall
Thursday	June 9	Festival Artists	7:30 pm	Packard Hall
Saturday	June 11	Outdoor Festival Celebration <i>with the Pink Hawks</i>	7:00 pm	Tava Quad
Sunday	June 12	Donor luncheon <i>with</i> Fellow performances	12:00pm 12:30pm	CAC Main Atrium
		Festival Artists	2:30 pm	Packard Hall
Monday	June 13	Music at Midday	12:15 pm	Packard Hall
Tuesday	June 14	Outreach Fellows Concert	1:00 pm	Hillside Comm Ctr
		Festival Orchestra	7:30 pm	Celeste Theatre CAC
Wednesday	June 15	Music at Midday	2:15 pm	Packard Hall
Thursday	June 16	Children's Concert	9 & 11 am	Celeste Theatre CAC
		Pre-Concert Recital	6:15 pm	Packard Hall
		Festival Artists	7:30 pm	Packard Hall
Friday	June 17	Music at Midday	12:15 pm	Packard Hall
Saturday	June 18	Concerto Readings	2:00 pm	Celeste Theatre CAC
Monday	June 20	Music at Midday	12:15 pm	Packard Hall
		Festival Artists	7:30 pm	Packard Hall
Tuesday	June 21	Outreach Concert	6:00 pm	Gold Hill Mesa
Wednesday	June 22	Music at Midday	12:15 pm	Packard Hall
Thursday	June 23	Music at Midday	12:15pm	Packard Hall
		Pre-Concert Recital	6:15 pm	Packard Hall
		Festival Artists	7:30 pm	Packard Hall
Friday	June 24	Music at Midday	12:15 pm	Packard Hall
		Festival Orchestra	7:30 pm	Celeste Theatre CAC

FACULTY:

Susan Grace, Music Director, piano
Virginia Barron, Assoc Director, viola
Scott Yoo, Conductor, violin

Steven Copes, violin
Ellen dePasquale, violin
Laura Frautschi, violin
Stefan Hersh, violin
David Kim, violin
Andrew Wan, violin
Toby Appel, viola/violin
Phillip Ying, viola
Mark Kosower, cello
Bion Tsang, cello
David Ying, cello
Susan Cahill, double bass
Alice Dade, flute
Elizabeth Mann, flute
Elizabeth Koch-Tiscione, oboe
Robert Walters, oboe, English horn
Jon Manasse, clarinet
Burt Hara, clarinet
Michael Kroth, bassoon
Michael Thornton, horn
Kevin Cobb, trumpet
John Rojak, trombone
John Novacek, piano
Bill Wolfram, piano
Aiyun Huang, percussion
Mike Van Wirt, percussion

STAFF:

Ann Van Horn, Assistant Director
Lisa Gregory, Academic Assistant
Liz Manring, Academic Assistant
Daryll Stevens, Music Library
Kate Nelson, Assistant to the Directors
Grace Nelson, Assistant to the Directors
Ella Neurohr, SMF Intern
Jordan Bates, SMF Intern
Xinyi Zhao, SMF Intern

Contact

Please contact the Festival Office with additional questions or information before you arrive at the Colorado College Summer Music Festival:


Ann Van Horn:
E-mail : avanhorn@ColoradoCollege.edu
Tel. (719) 389-6552 or Cell (719) 238-5972

Kate Nelson:
E-mail: knelson@ColoradoCollege.edu
Cell: (651)-955-9563

Virginia Barron:
Email: vbarron56@gmail.com
Cell: (716) 906-9783

Colorado College Main Information
719-389-6000

Colorado College Campus Safety
719-389-6707

The background is a solid blue color. Overlaid on this background are several light blue, stylized silhouettes of musical instruments. In the upper left, there is a French horn. In the lower left, there is a violin. In the lower right, there is a trumpet. A white rectangular box with a thin black border is centered on the page, containing text about the Colorado College Summer Music Festival.

The Colorado College
Summer Music Festival
14 E. Cache La Poudre Street
Colorado Springs, CO 80903
www.coloradocollege.edu/musicfestival
719.389.6552