



# Our CC

*Safeguarding the CC Experience*





# Introducing Today's Speakers

---



**Jeff Keller '91, P'23**  
*Outgoing Board Chair*



**Jen Hoglin '91**  
*AAC President  
& Trustee*



**Dr. Manya Whitaker**  
*Interim President*



**Lori Seager**  
*Vice President and Chief  
Financial Officer*



**Kyle Samuel '92**  
*Incoming Board Chair*





**Today's Purpose**  
*Fortifying Our CC*

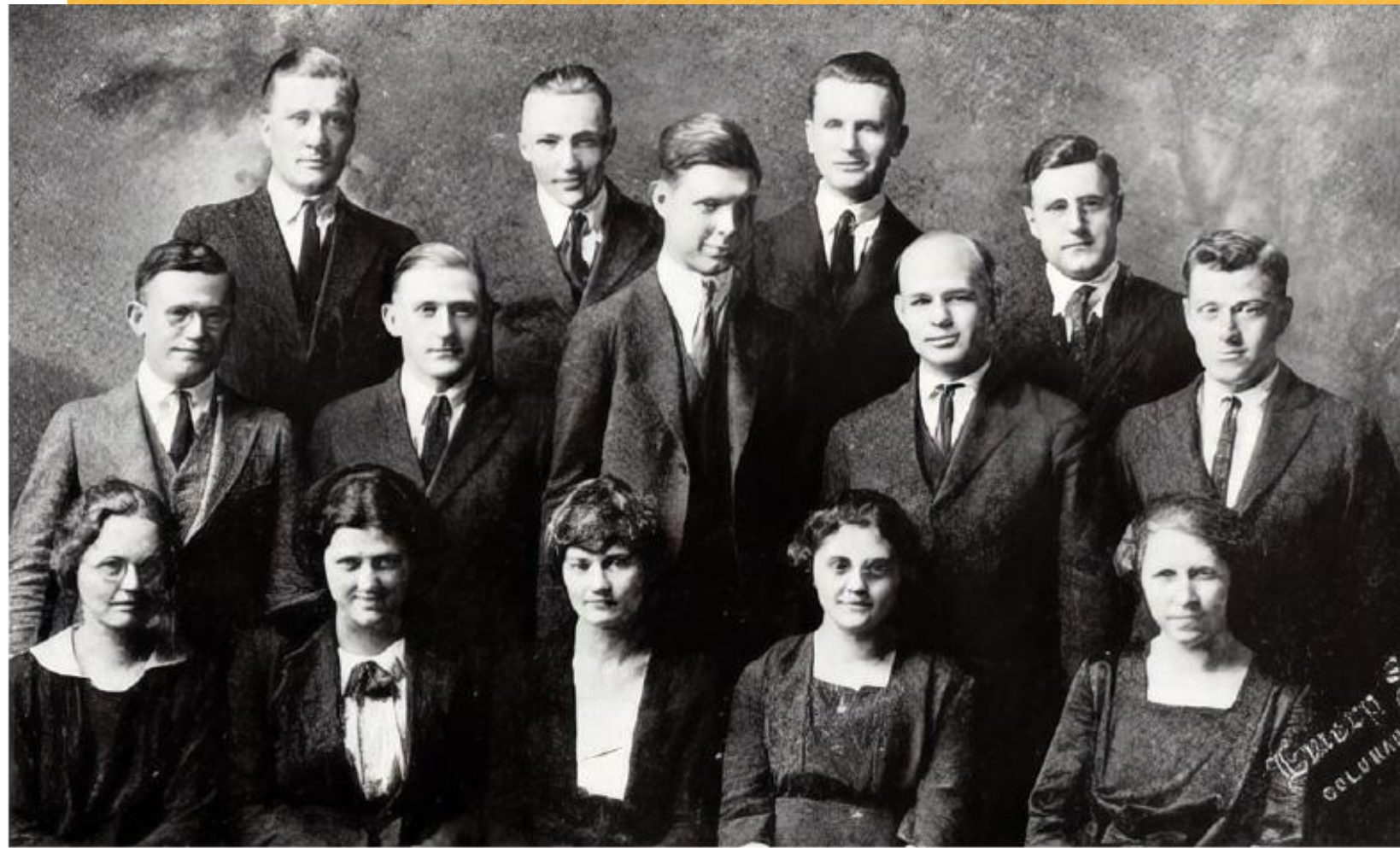


A photograph of three students sitting on a black metal bench outdoors on a grassy area. The student on the left has long, wavy brown hair and is wearing a grey t-shirt. The student in the middle has dark, wavy hair and glasses, wearing a blue t-shirt with a Harley-Davidson logo. The student on the right has dark hair and is wearing a black t-shirt with a graphic. They are all eating from small white cups of ice cream. A yellow graphic overlay is on the left side of the image, featuring a large '150' and the text 'YEARS OF COMMEMORATING COLORADO COLLEGE'.

# 150

YEARS OF COMMEMORATING COLORADO COLLEGE





**Since 1874 —**

Always open to...

- All genders
- All races

All perspectives and experiences  
add value to society.

It's the foundation of the liberal arts.



# Today our impact looks like —

---



Nearly  
**30K**  
alumni



Living in all  
**50**  
states



and  
**108**  
countries

# Today our impact looks like —

---



Nearly  
**1,000**  
CEOs, entrepreneurs,  
C-suite

## COMPANIES:

- Google
- Amazon
- JP Morgan Chase
- Deloitte
- Microsoft
- National Institutes of Health
- and many more



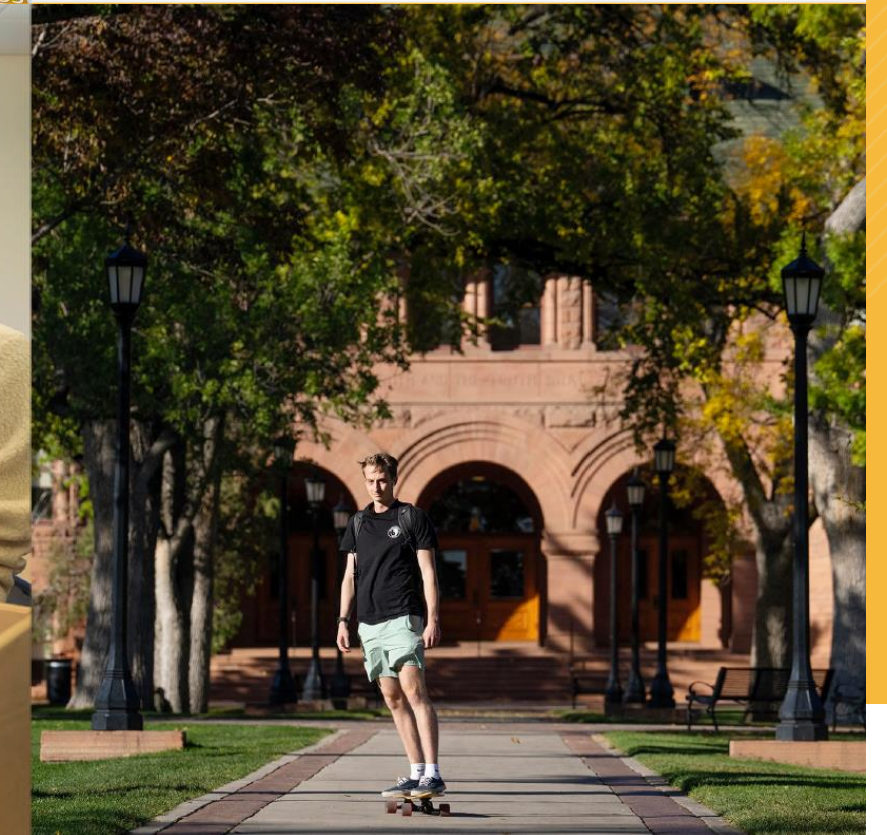
## INDUSTRIES

- Education
- Healthcare
- Research
- Law
- Banking
- IT



Today our impact looks like —

# Engaged Students, Alumni, Families, and Friends







# Centering Our Academic Mission



# Dialogic Teaching

- Community of learners
- Knowledge is co-created, meaning is shaped collaboratively
- Focus on **how you think**, not **what you think**
- Exposure to diverse viewpoints builds cognitive skills
- Small, dialogue-based classes provide opportunities for debate and discovery





# Civic Minded

**60%** of students engaged  
in community work

**66** community-engaged  
courses taught by **46**  
instructors across **21**  
disciplines

Partnerships with **210**  
community organizations

**11** Public Interest Fellows  
placed

Top Peace Corps  
Volunteer-Producing  
Institution

**25%** of student body  
participated in study  
abroad opportunities



# ...and Committed to Applied Learning

---



Over  
**100**

funded summer internships



**100**

independent research projects





***New***  
**“Research Colleges &  
Universities” (RCU)  
Designation**

**CC RESEARCH  
HIGHLIGHTS:**

- ~125 students conducting summer research annually
- 24 active faculty grants
- Named a "Top Fulbright Producer" for the fourth time
- ~20% of annual research expenditures come from external grants



# Beyond the Block

---



Multi-divisional  
athletics



Arts and culture



Over **100**  
active student  
organizations





**Safeguarding CC's**  
***Next 150 Years***



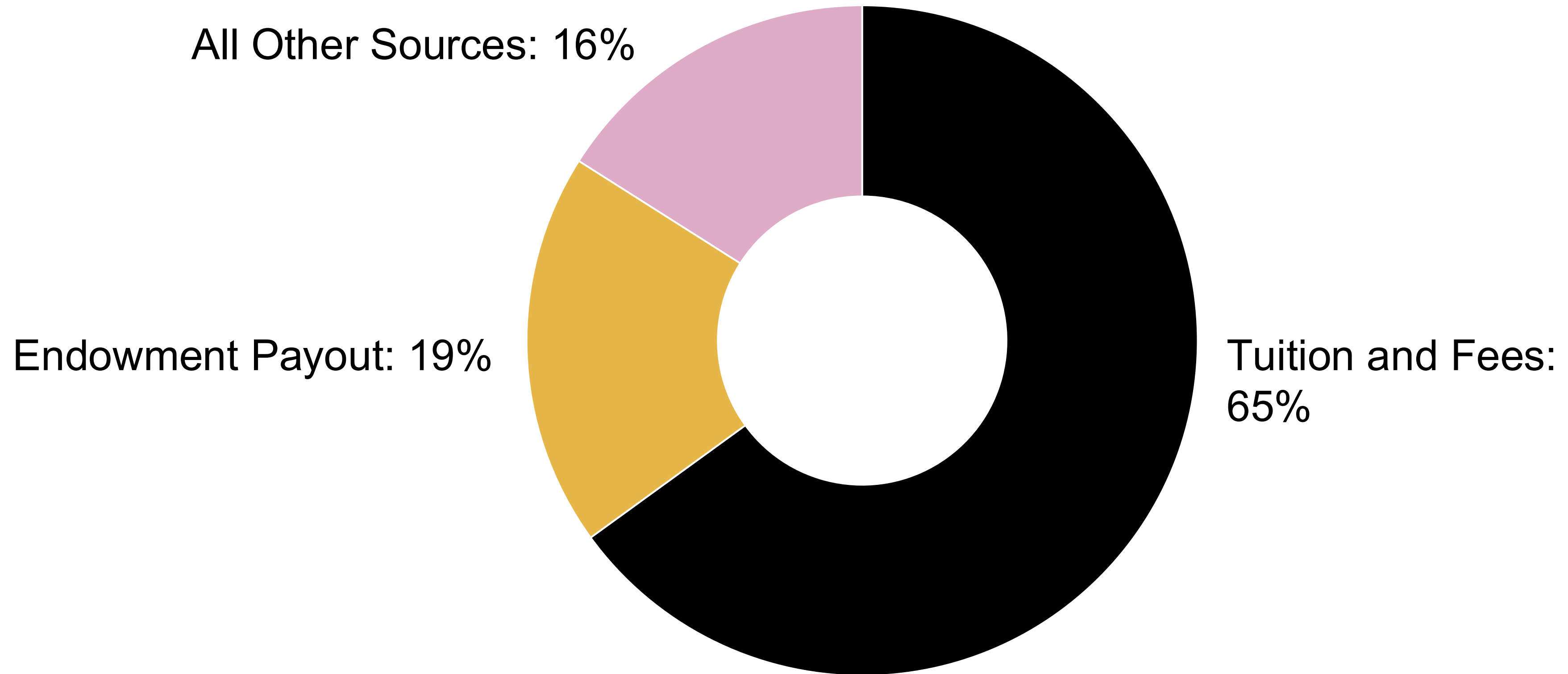
# CC's Endowment & Financial Model





# FY25 Operating Budget

---





# Endowment 101

Pool of nearly  
**1,000** investments

Permanent source of  
income for the College

Largely funded by  
philanthropic gifts

**~20%** of College's annual  
operating budget

**~40%** of payout  
dedicated to financial aid





**One of only 84 colleges and universities nationwide that meet full demonstrated financial need for all admitted students.**





**Current Endowment Excise Tax = 1.4%**





**Proposed Endowment Excise Tax =  
7%, 14%, or even up to 21% (\$7M!)**



# Additionally —



## Financial Aid



# And —

---



## Funding for Research



# What We're Doing

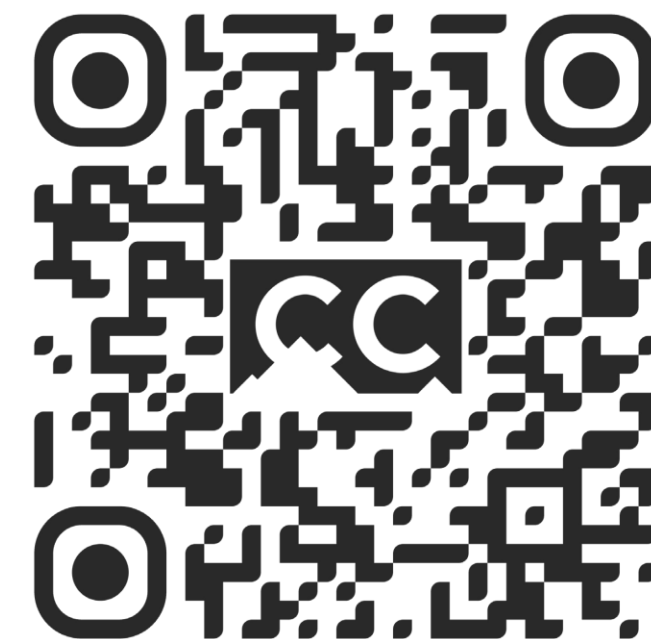
- Joined **Small Colleges Coalition**, a group of more than two dozen colleges and universities across 17 states serving greater than 50,000 students
- 4/22: Interim President Whitaker signed **Association of American Colleges & Universities letter**
- 4/30: Leadership visited **Capitol Hill**
- 5/1: Interim President Whitaker and Board Chair Keller signed **Association of Governing Boards of Colleges & Universities letter**
- Modeling financial scenarios
- **And now, engaging YOU, our alumni and families.**



# How to Get Involved

**If you have a connection in  
Washington, D.C.:**

**Contact Cindy Hyman at  
[chyman@coloradocollege.edu](mailto:chyman@coloradocollege.edu)**





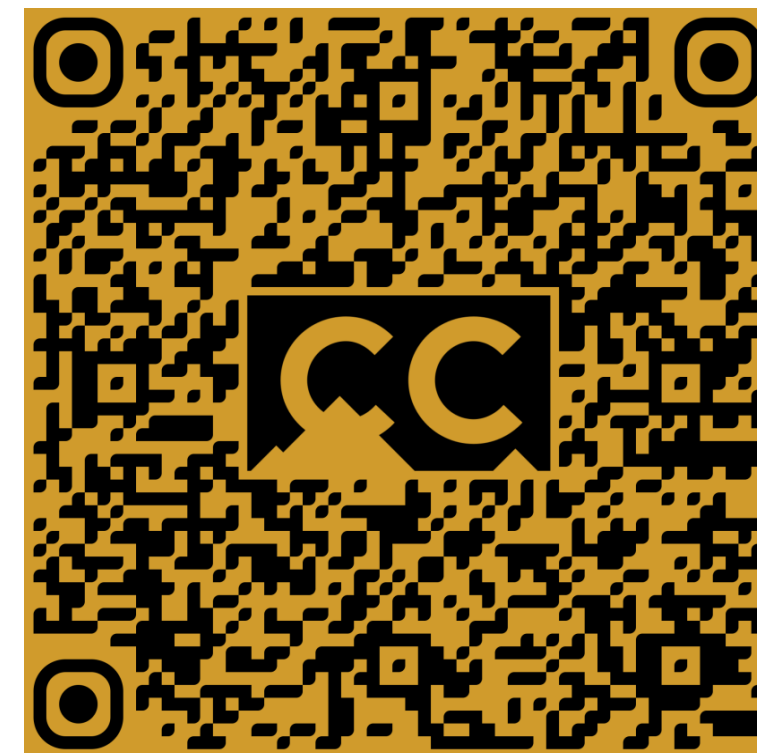
## **How to Get Involved**

---

**No connection but want to  
be a CC advocate?**

**Visit**

[coloradocollege.edu/safeguardCC](https://coloradocollege.edu/safeguardCC)





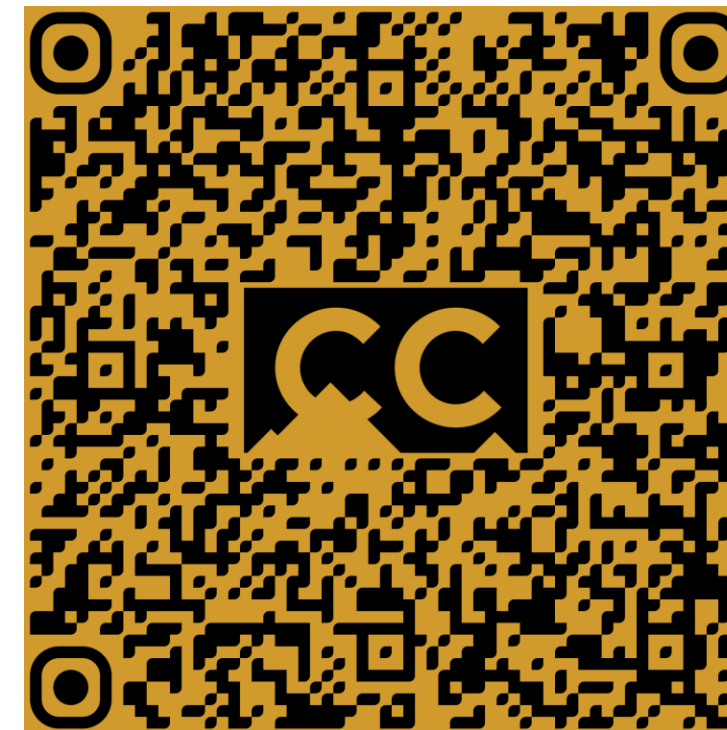
## How to Get Involved

## Make a Gift

- Annual Fund for Financial Aid
- Dean's Summer Research Award
- Annual Fund for Student Opportunities

## Visit

[coloradocollege.edu/safeguardCC](https://coloradocollege.edu/safeguardCC)







**THANK YOU, AND GO CC!**

**Visit**

[coloradocollege.edu/safeguardCC](https://coloradocollege.edu/safeguardCC)

