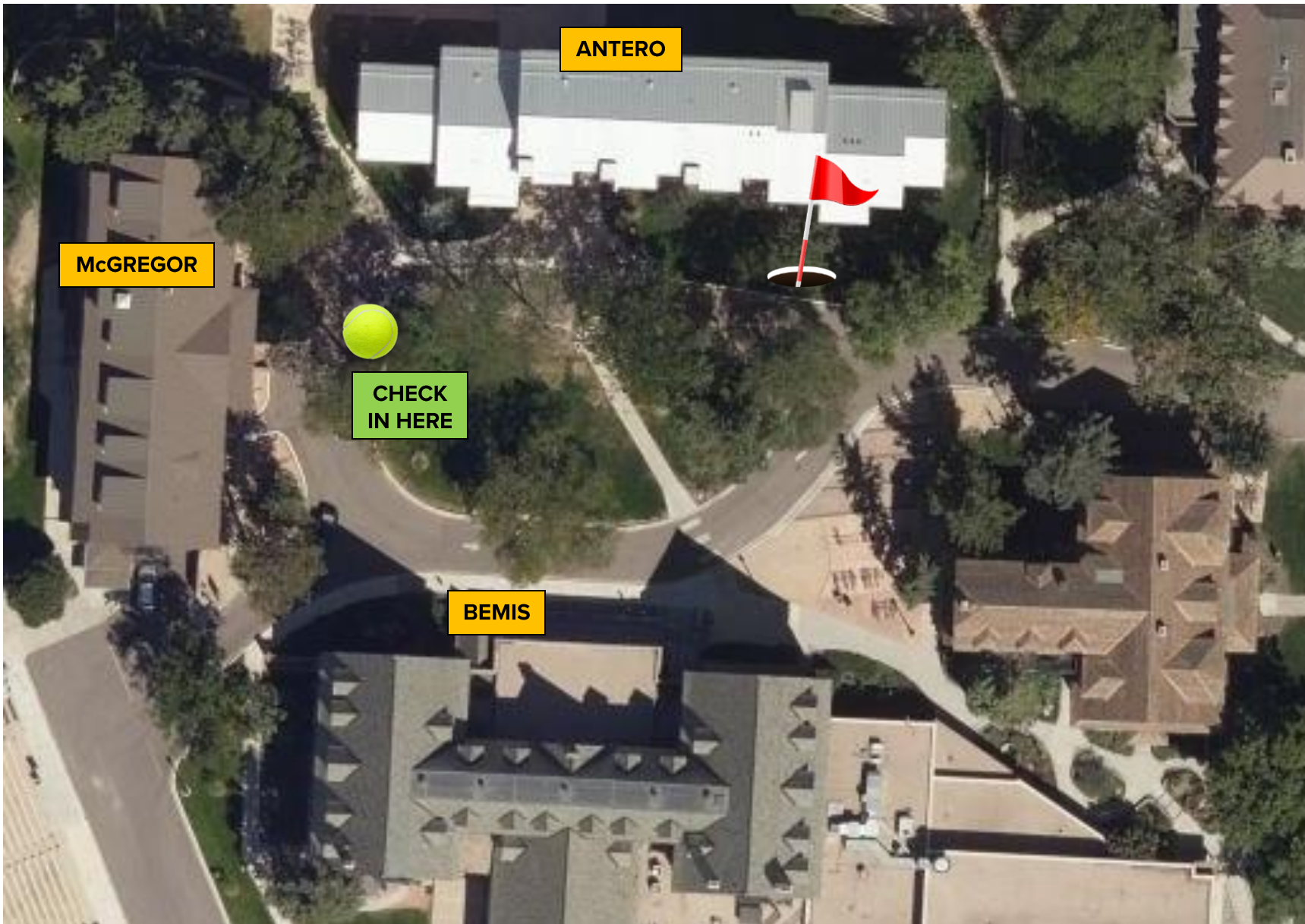
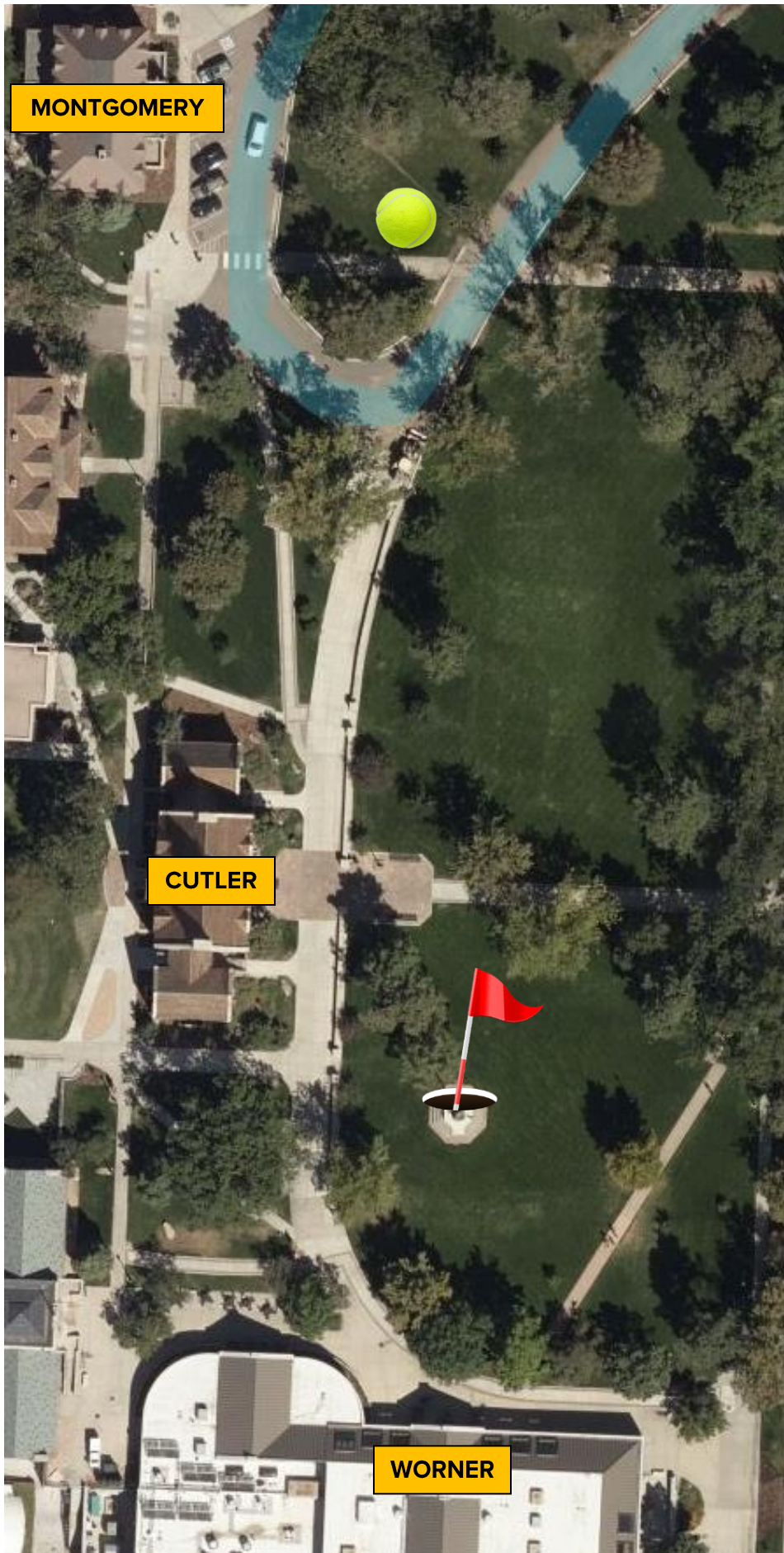


HOLE 1: BEMIS LAWN I

Check in with the starter. Tee off from the western side of the Bemis lawn and hit the light post on the eastern side of the lawn.





HOLE 2: FLAGPOLE

Tee off from the lawn across the drive from Montgomery Hall and hit the Worner Quad flagpole.

Cross Cascade for next tee box





**HOLE 3: INFO BLOCK TO
INFO BLOCK**

Tee off in front of the bench near the Armstrong Info Block and hit the Info Block on the south side of Tutt Library.

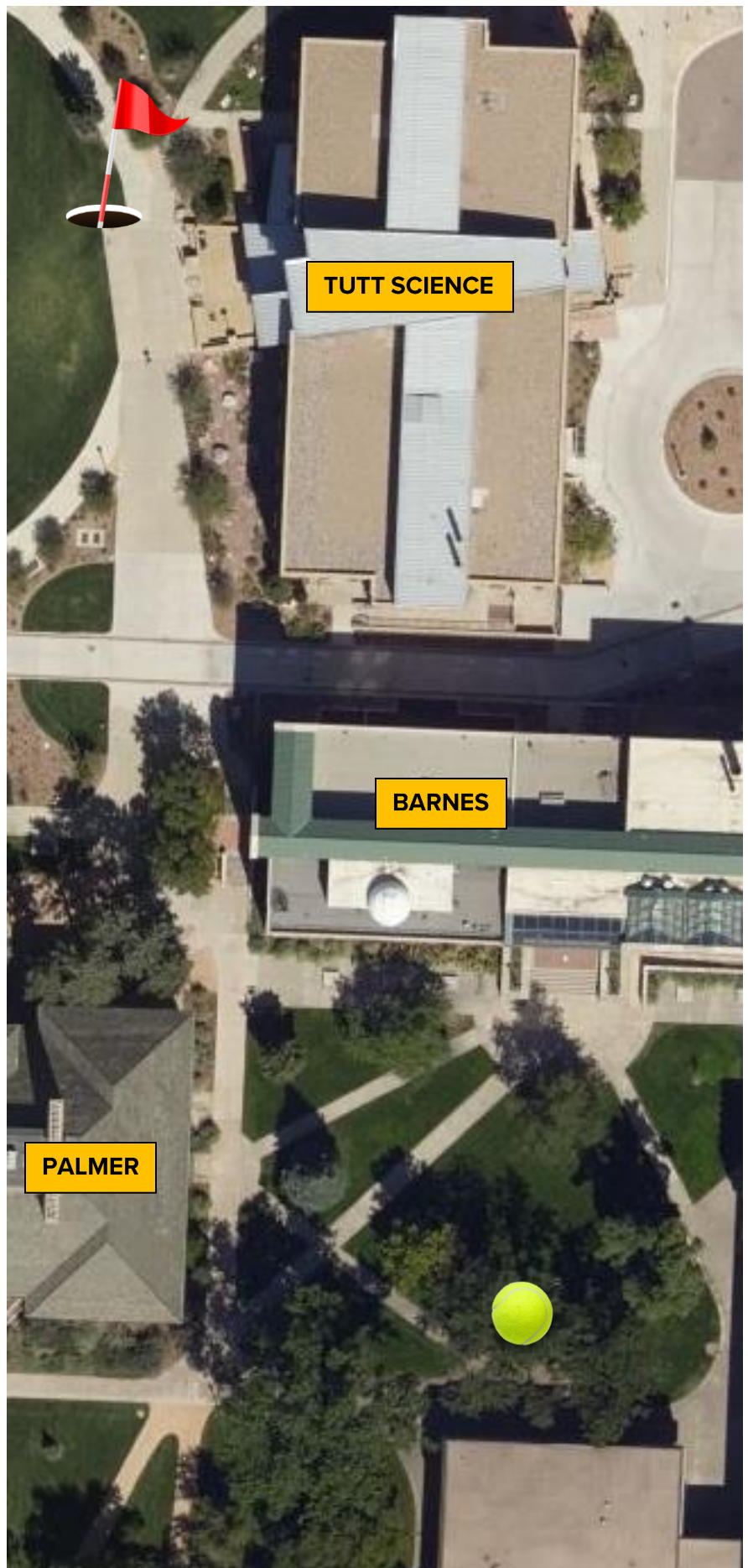
HOLE 4: LOVERS STATUE

Tee off from the Info Block on the south side of Tutt Library and hit the Lovers Statue



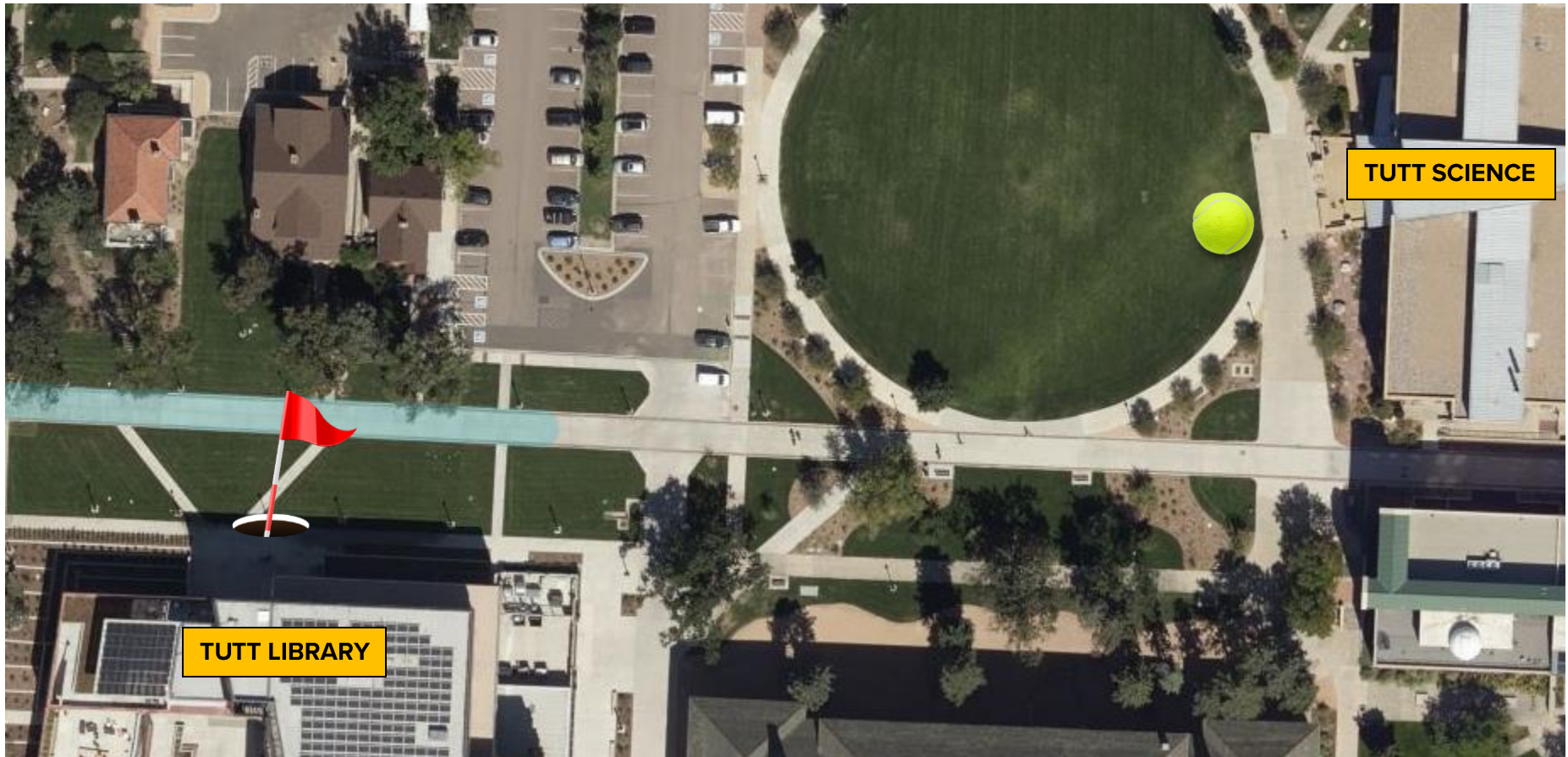
HOLE 5: SOLAR BENCH

Tee off in front of the Lovers Statue and hit the Solar Bench in front of Tutt Science.



HOLE 6: NORTH TUTT INFO BLOCK

Tee off from the east side of Tutt Science Quad and hit the Info Block on the north side of Tutt Library.



Cross Cascade for next tee box



HOLE 7: BEMIS LAWN II

Tee off just south of Boettcher and hit the light post on the eastern side of the Bemis lawn.



Hand your scorecard in to the starter, or the Fitness Center front desk, and keep your eye on the Leaderboard.