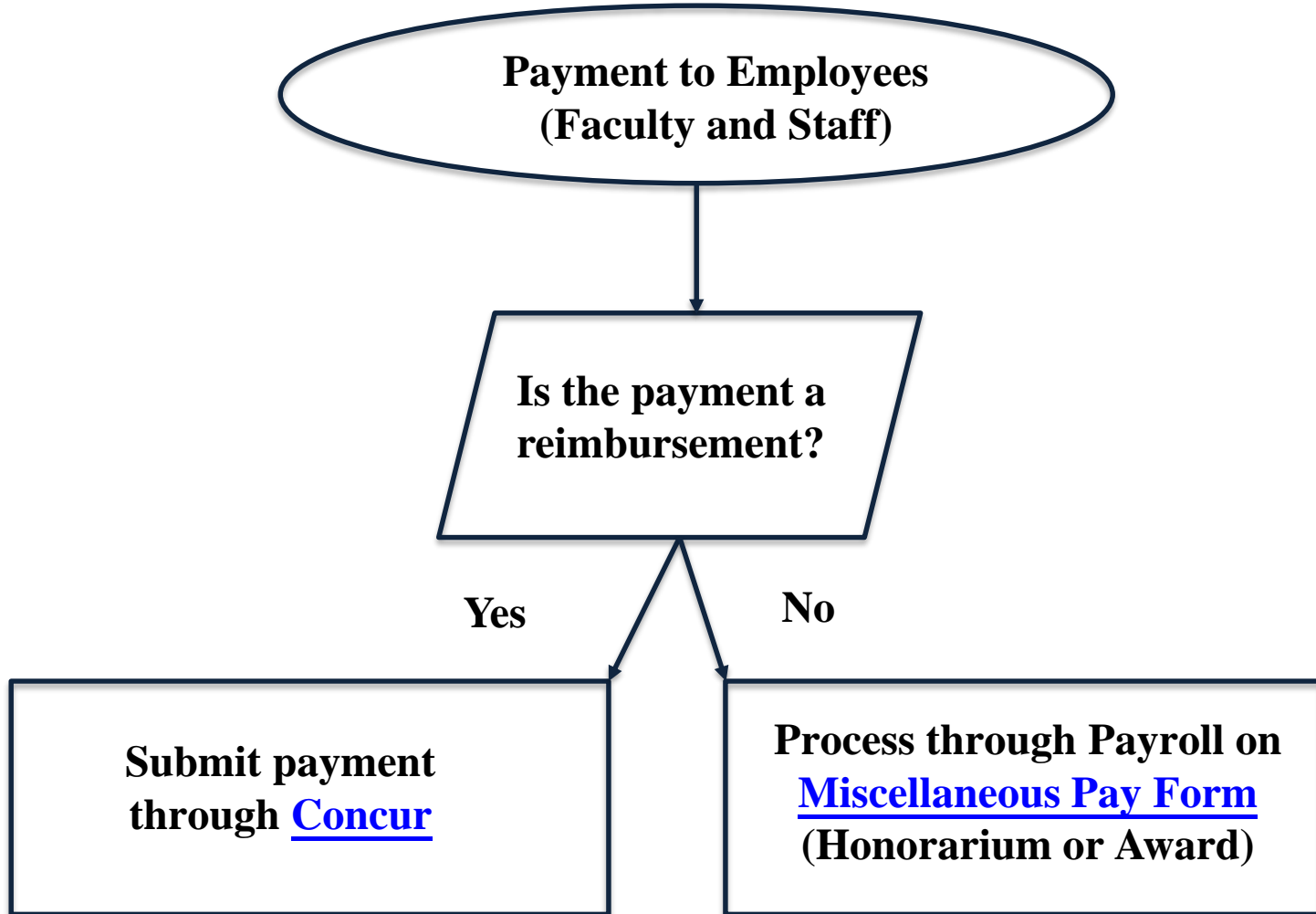


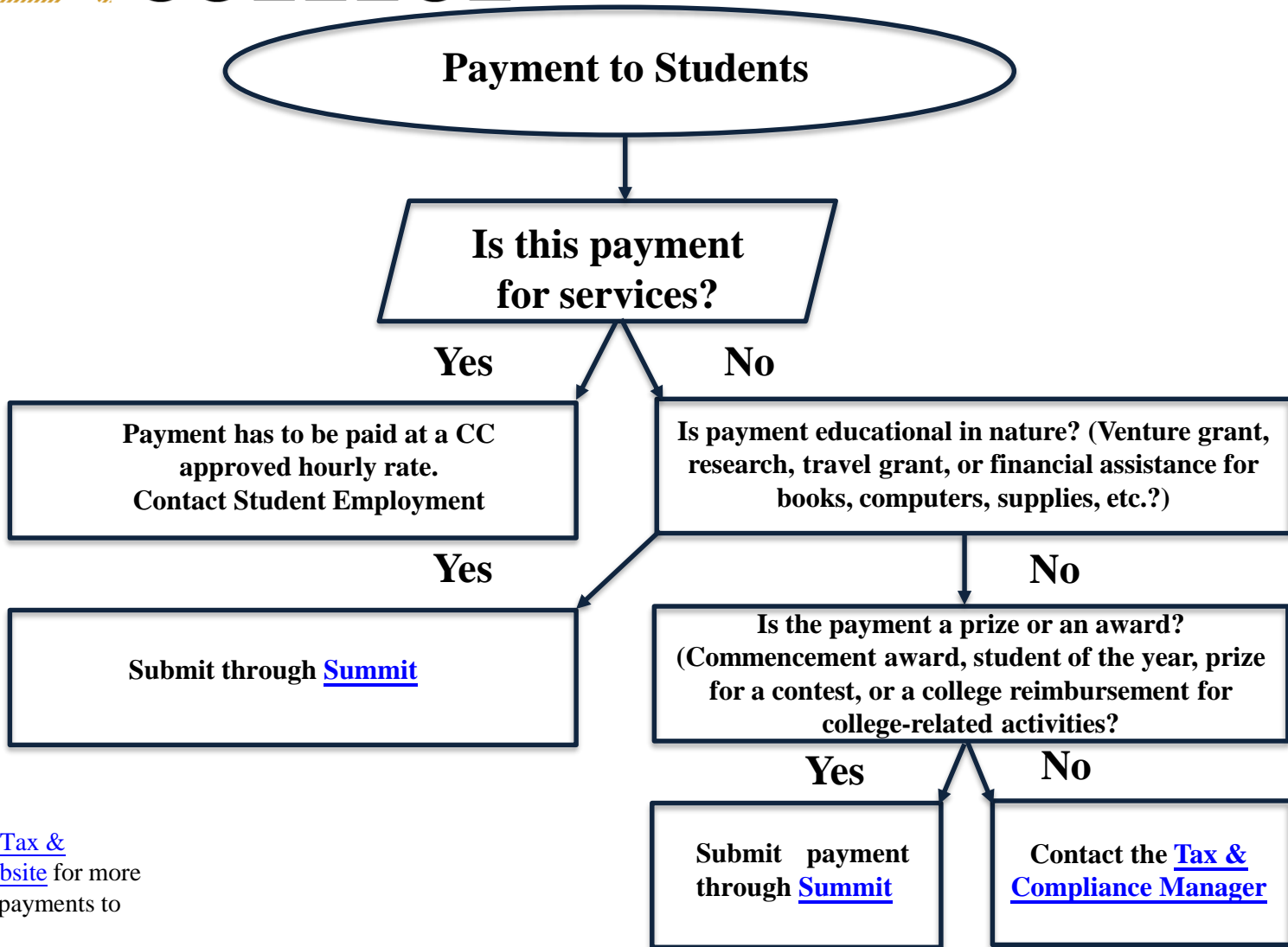


COLORADO COLLEGE





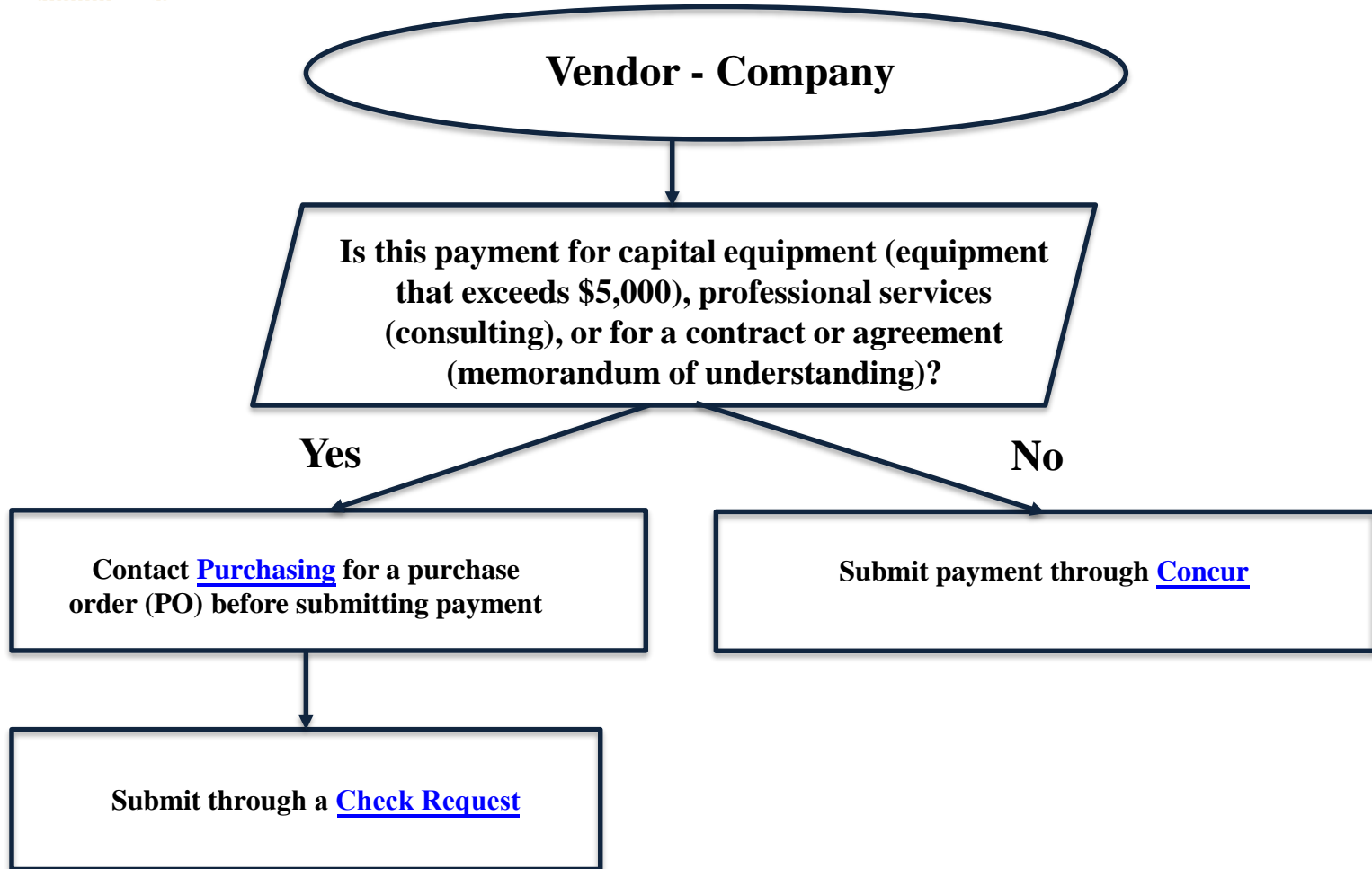
COLORADO COLLEGE



*Please see the [Tax & Compliance website](#) for more information on payments to students



COLORADO COLLEGE



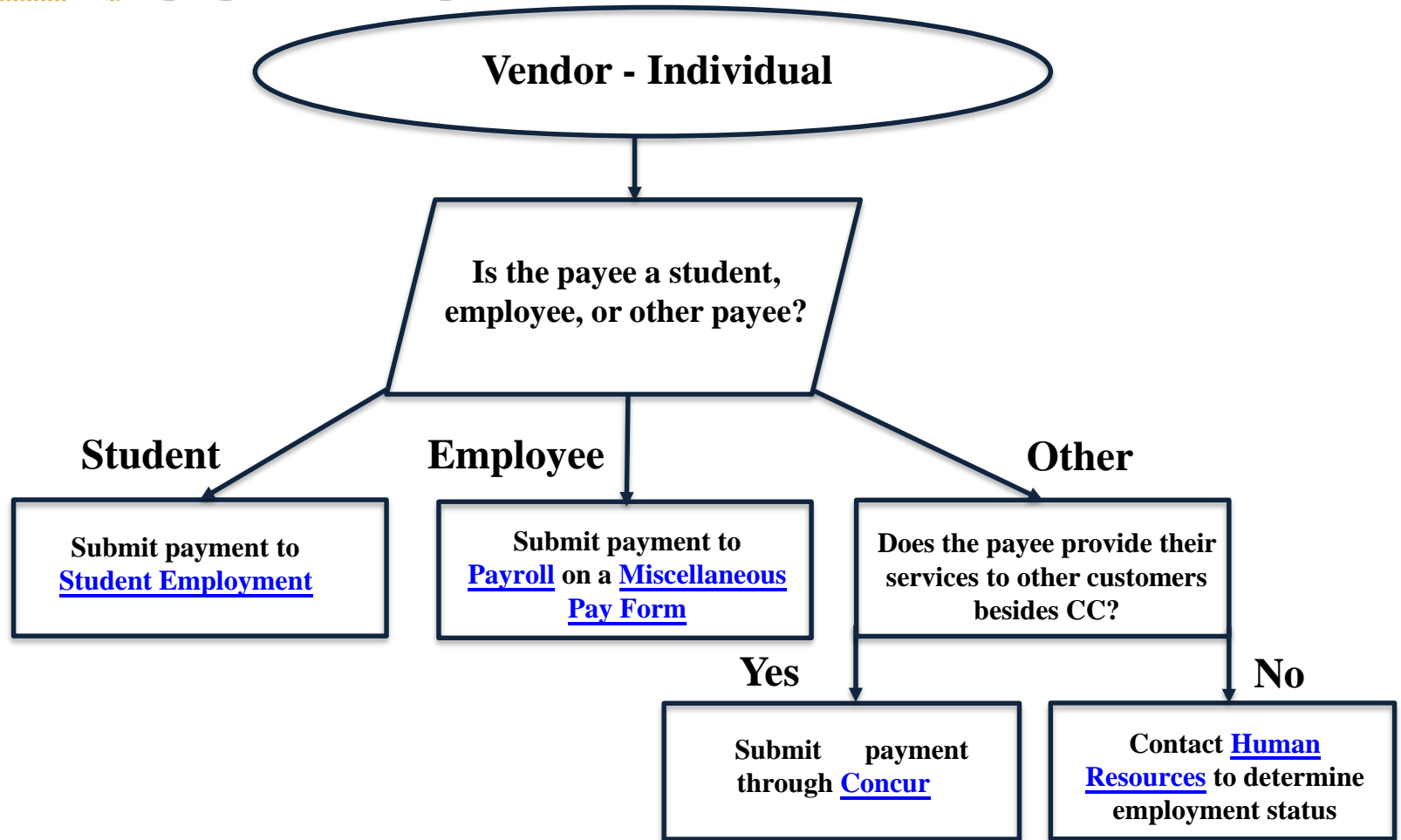
*Payments against PO's can not be processed through Concur. Please see the Purchasing Website for more information.

**If payee is international, see International Flowchart.

***All payments require a "W-9" or "W-8BEN" before payment can be processed



COLORADO COLLEGE

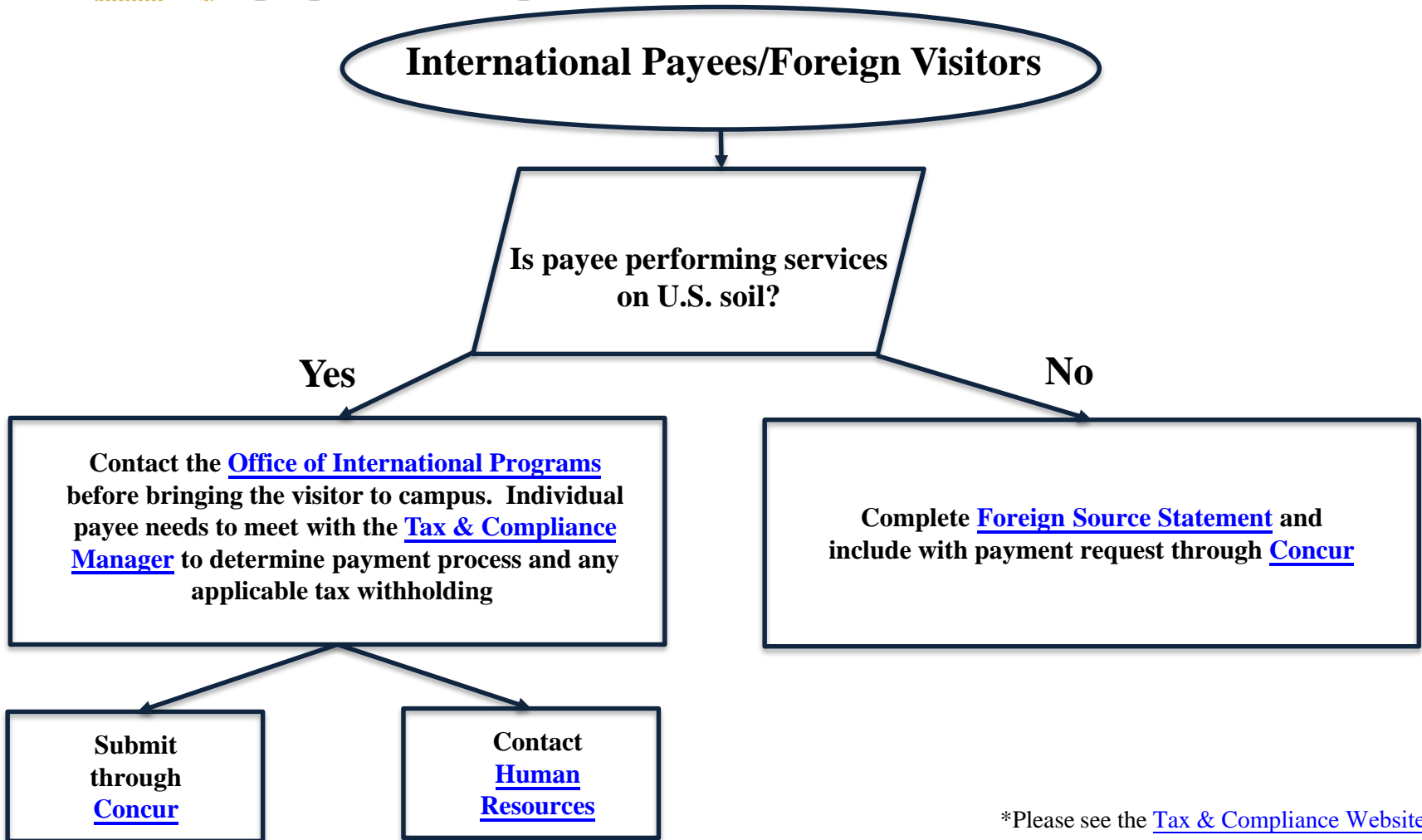


*If payee is international, see International Flowchart.

**All payments require a "W-9" or "W-8BEN" before payment can be processed



COLORADO COLLEGE



*Please see the [Tax & Compliance Website](#) for more information on payments to international payees