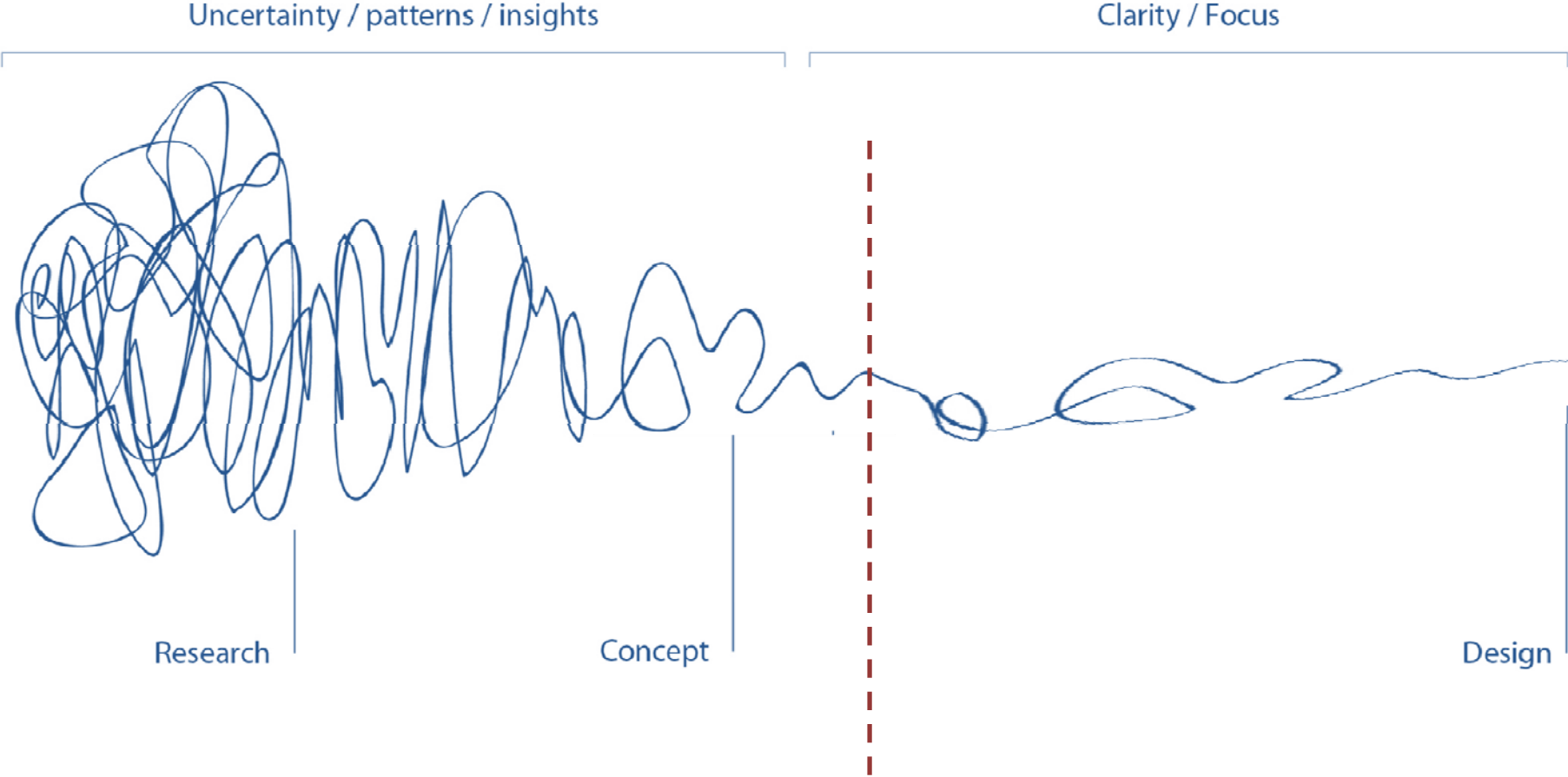


A photograph of the Colorado College Tutt Library building, a modern structure with a grey, vertically-slatted facade and large glass windows. The building is set on a grassy lawn with some trees in the background. In the foreground, there is a concrete walkway and a low concrete wall with the words "TUTT LIBRARY" embossed on it. A set of stairs leads up to the entrance of the building.

Colorado College
Tutt Library Renovation

Presented by Pfeiffer Partners February 26, 2015

THE DESIGN PROCESS



{ program refinement }

PROGRAM OUTLINE

CONCEPTUAL PROGRAM (8/ 2014)

1. USER SPACE
2. COLLECTIONS
3. STAFFING & SERVICES

PRELIM SCHEMATIC DESIGN PROGRAM (2/ 2015)

1. USER AREAS – SHARED
2. COLLECTIONS AREA
3. LIBRARY STAFFING & SERVICES

4. SUPPORT
5. LEARNING COM'NS/CENTER
6. ADD'TNL USER SPACE (WISHLIST)

4. COLKET CENTER FOR ACADEMIC EXCELLENCE
5. INFORMATION TECHNOLOGY SERVICES
6. NON LIBRARY PARTNERS

7. BUILDING SUPPORT AREAS

60,525 NSF / 1,119 SEATS

66,691 NSF / 1,170 SEATS

△ 6,166 ASF / 51 SEATS

No.	Space	CONCEPTUAL PROGRAM (8/2014)		PRELIMINARY SCHEMATIC PROGRAM (2/2015)				DELTA	
		No. Of Seats	ASF Total	Seat Count				ASF	Δ%
				Faculty/ Staff	Student Workers	(Shared) Users/ Patrons	ASF Total		
1.0	USER AREAS / SHARED	759	21,065	-	-	641	20,809	(256)	-1%
1.1	Reader/Study Areas - Open Plan (Lively, open study)	177	5,840	-	-	155	3,471	(2,369)	-41%
1.2	Outdoor Reader/Study Areas	-	-	-	-	-	-	-	0%
1.3	Silent & Quiet Study	260	9,550	-	-	260	10,900	1,350	14%
1.4	Enclosed Study & Classrooms	152	2,300	-	-	156	4,150	1,850	80%
Specialized Spaces:									
1.5	Event Space / Patio	65	1,125	-	-	-	-	(1,125)	-100%
1.6	Retail / Café	30	1,000	-	-	24	1,038	38	4%
0.0	GIS Lab	-	-	-	-	-	-	-	0%
1.7	Tech Sandbox	25	500	-	-	20	500	-	0%
1.8	Data Visualization	25	500	-	-	20	500	-	0%
1.9	AV Recording Studio	25	250	-	-	6	250	-	0%
2.0	COLLECTION AREA	-	18,525	-	-	-	18,315	(210)	-1%
2.1	Collection Area	-	18,525	-	-	-	18,315	(210)	-1%
3.0	LIBRARY STAFFING & SERVICES	163	9,270	26	16	150	10,175	905	10%
3.1	Information/Security	-	100	-	-	-	100	-	0%
3.2	Library Administration	2	265	2	-	12	700	435	164%
3.3	Technical Services Group	17	1,085	7	4	-	1,156	71	7%
3.4	Access Services Group	8	1,550	6	7	-	2,121	571	37%
3.5	Research Services	7	720	7	-	2	816	96	13%
3.6	Library Metadata / Systems / ILS	3	450	2	2	-	476	26	6%
3.7	Library Instructional Spaces	50	1,600	-	-	50	1,646	46	3%
3.8	Special Collections / Archives	26	1,450	2	3	38	1,780	330	23%
3.9	Shared Meeting Spaces	50	2,050	-	-	48	1,380	(670)	-33%
4.0	COLKET CNTR FOR ACAD. EXCELLENCE	106	7,045	23	21	155	8,540	1,495	21%
4.1	Colket Center for Academic Excellence	46	2,025	6	1	-	556	(1,469)	-73%
4.2	Writing Center & Writing Program	-	-	5	4	4	758	758	0%
4.3	English As Second Language (ESL)	-	-	1	-	-	100	100	0%
4.4	Quantitative Reasoning Center	18	3,300	3	-	24	1,264	(2,036)	-62%
4.5	Crown Faculty Center	5	360	1	8	-	600	240	67%
4.6	First Year Experience (FYE) Program	-	-	2	-	-	264	264	0%
4.7	Shared Amenities (Partners' Common Support)	33	1,110	-	8	127	4,286	3,176	286%
4.8	Accessibility Office	4	250	5	-	-	712	462	185%

See 5.4 below

Cont.

No.	Space	CONCEPTUAL PROGRAM (8/2014)		PRELIMINARY SCHEMATIC PROGRAM (2/2015)				DELTA	
		No. Of Seats	ASF Total	Seat Count				ASF	Δ%
				Faculty/ Staff	Student Workers	(Shared) Users/ Patrons	ASF Total		
5.0	INFORMATION TECHNOLOGY SERVICES (IT)	76	2,185	10	9	77	4,586	2,401	110%
5.1	Frontline Services: IT Help Desk	20	1,085	2	7	-	1,120	35	3%
5.2	Innovative Technology: CAT Lab	31	850	2	2	26	1,116	266	31%
5.3	Innovative Technology: Instructional Support	-	-	6	-	14	804	804	0%
5.4	Innovative Technology: GIS Lab	25	250	-	-	10	250	-	0%
5.5	ITS Public Use Computers	-	-	-	-	27	1,296	1,296	0%
6.0	NON-LIBRARY PARTNERS	15	985	22	8	12	2,816	1,831	186%
6.1	International Programs	4	365	6	-	12	828	463	127%
6.2	Sustainability Office	1	100	3	4	-	408	308	308%
6.3	Collaborative for Community Engagement (CCE)	5	320	5	2	-	500	180	56%
6.4	Office of Field Study	1	100	5	2	-	516	416	416%
6.5	Undergraduate Research Support	1	25	-	-	-	-	(25)	-100%
6.6	In-Residence Program	1	25	1	-	-	400	375	1500%
6.7	Alumni Connection	1	25	1	-	-	64	39	156%
6.8	Pedagogy Researcher	1	25	1	-	-	100	75	300%
7.0	BUILDING SUPPORT AREAS	-	1,450	-	-	-	1,450	-	0%
7.1	Support Areas	-	1,450	-	-	-	1,450	-	0%
8.0	NON-ASSIGNABLE	-	-	-	-	-	-	-	0%
8.1	Non-Assignable	-	-	-	-	-	-	-	0%
		1,119		81	54	1,035			
		All Seats		Faculty/ Staff	Stdnt Wrkrs	Users/Patrons			

See 4.1 above

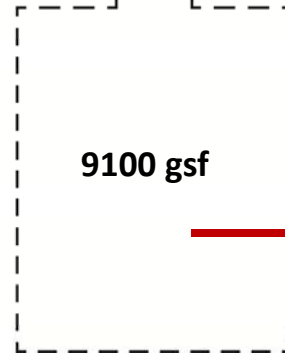
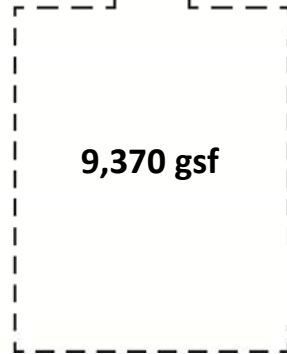
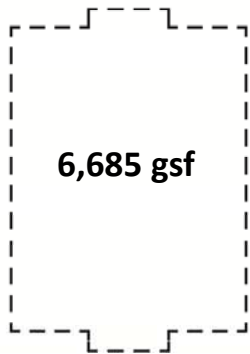
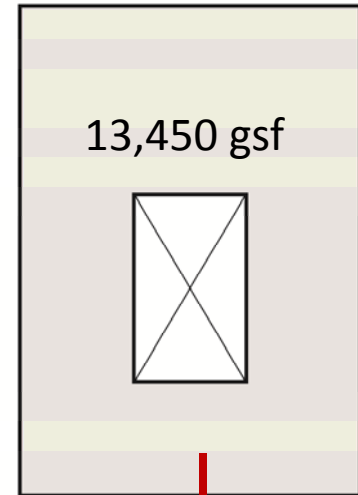
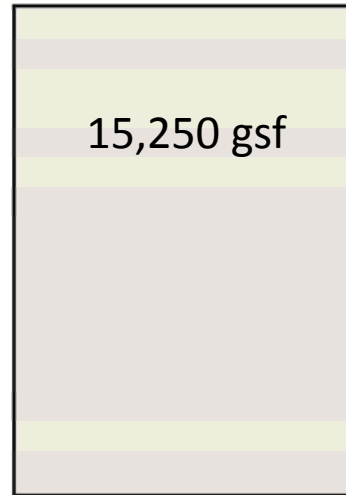
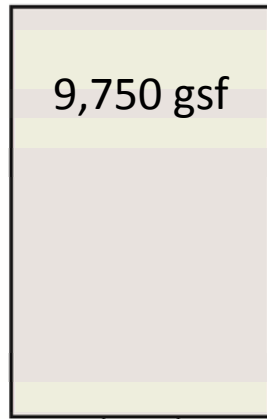
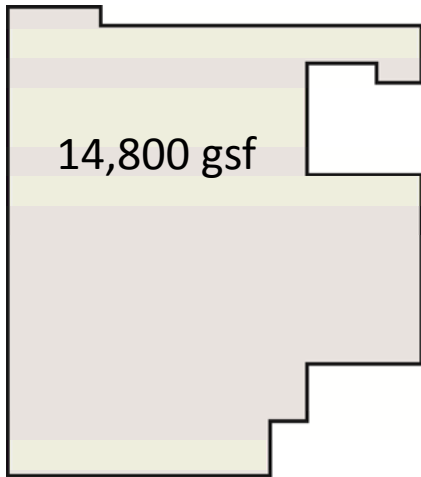
{ **concept** refinement }

Lower Level

Ground Level

Level 2

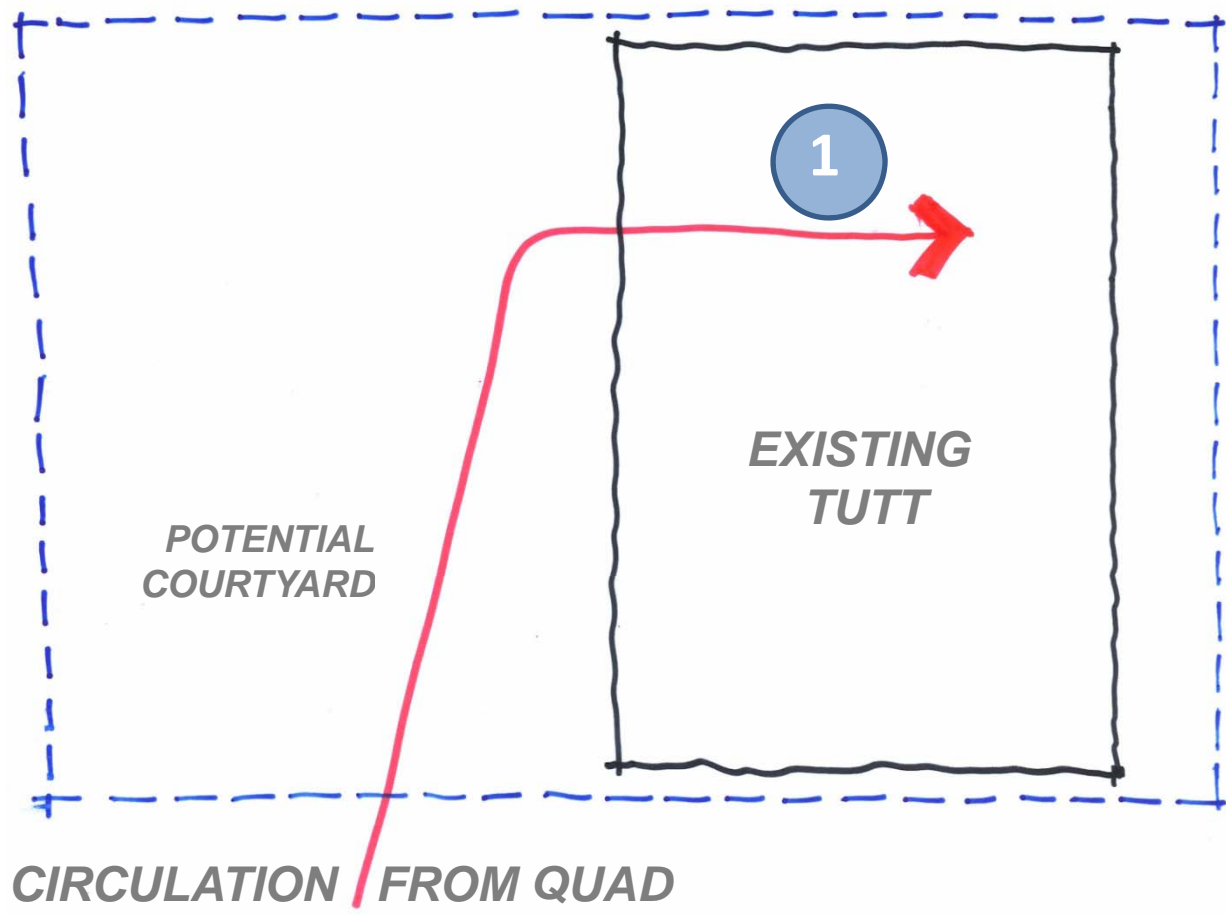
Level 3



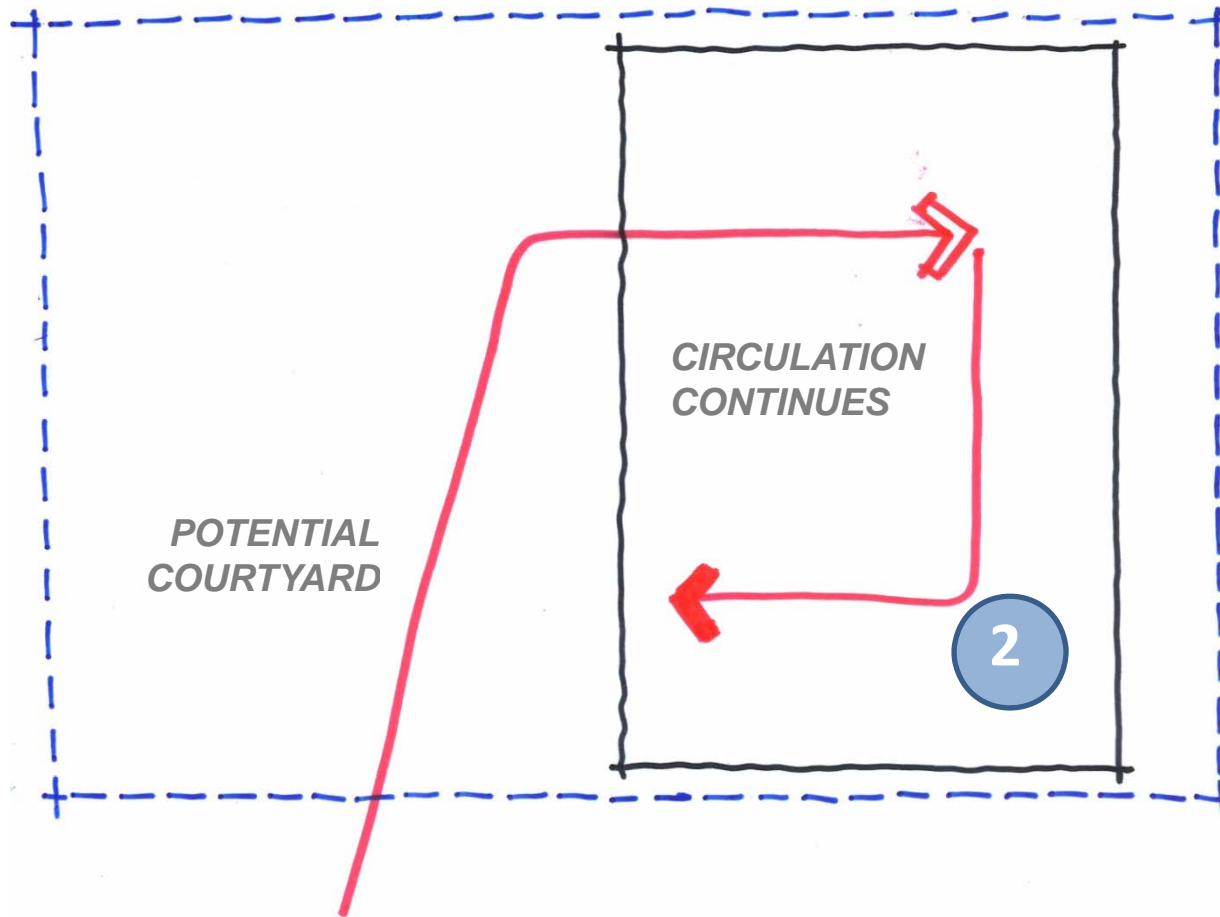
**53,250 gsf Tutt Existing
[to be renovated]**
**25,155 gsf Tutt South
[to be demolished]**

$$\begin{array}{rcl} 91,000 \text{ gsf} & - & 53,250 \text{ gsf} & = & 37,750 \text{ gsf} \\ \text{+/- planned total} & & \text{Tutt Existing} & & \text{New Construction} \end{array}$$

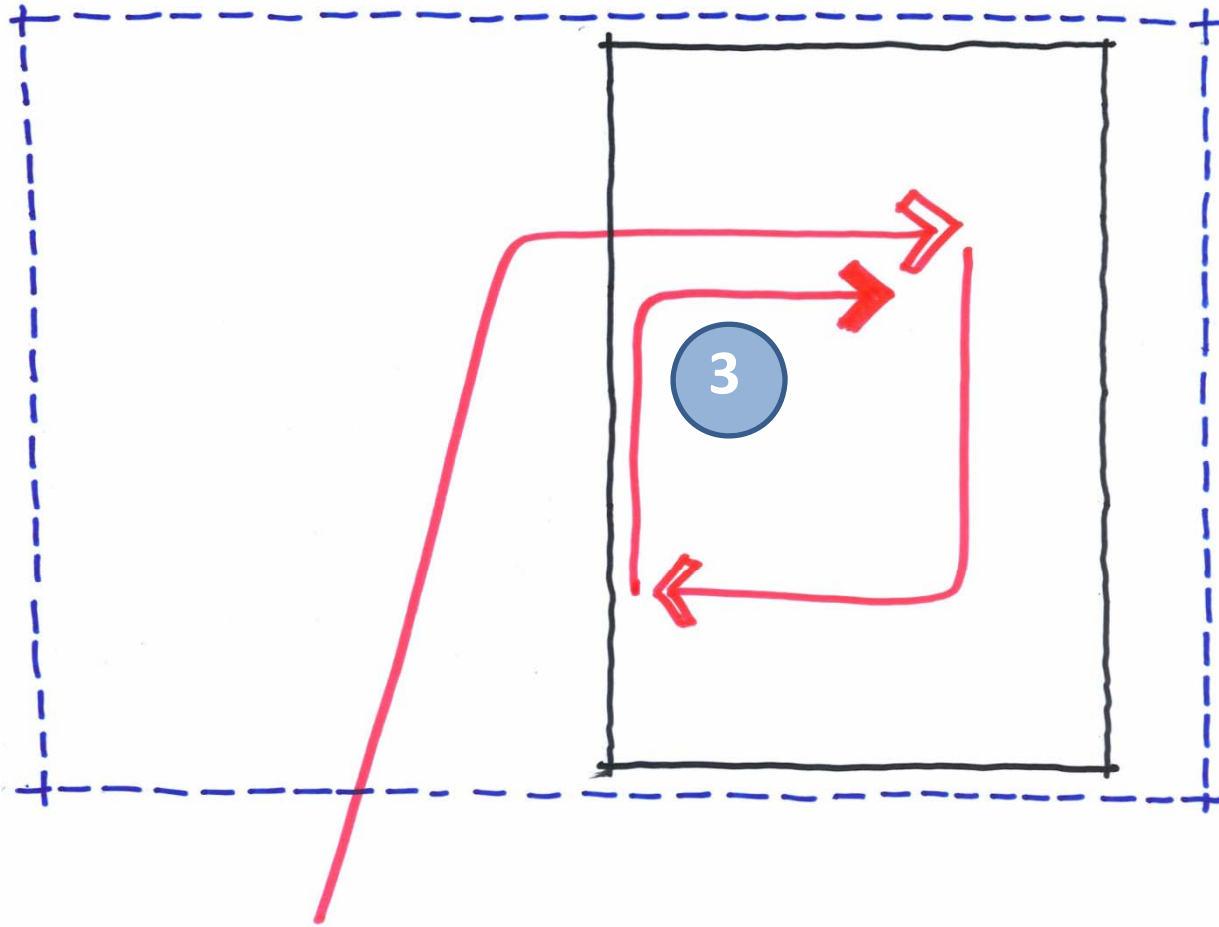
{ spiral }



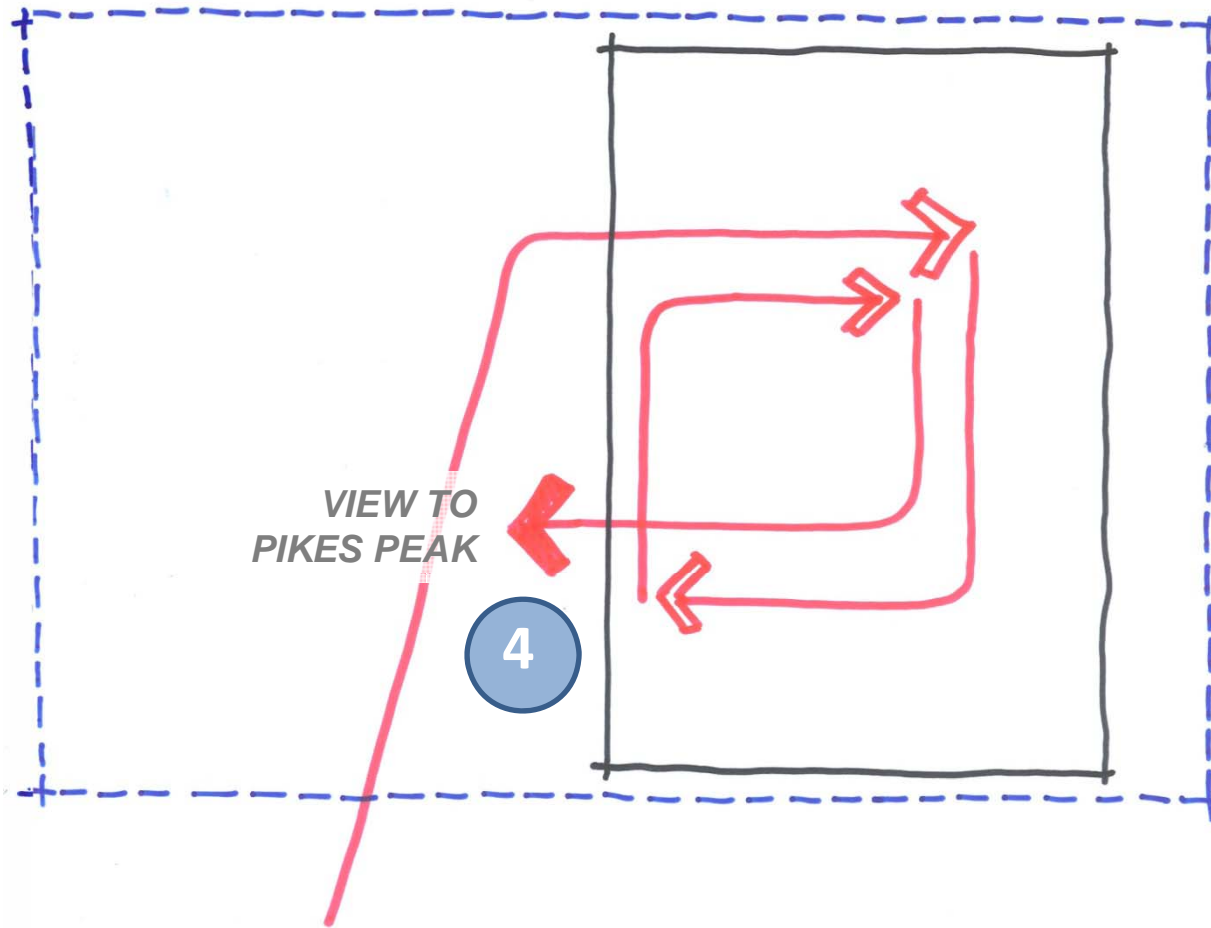
{ spiral }



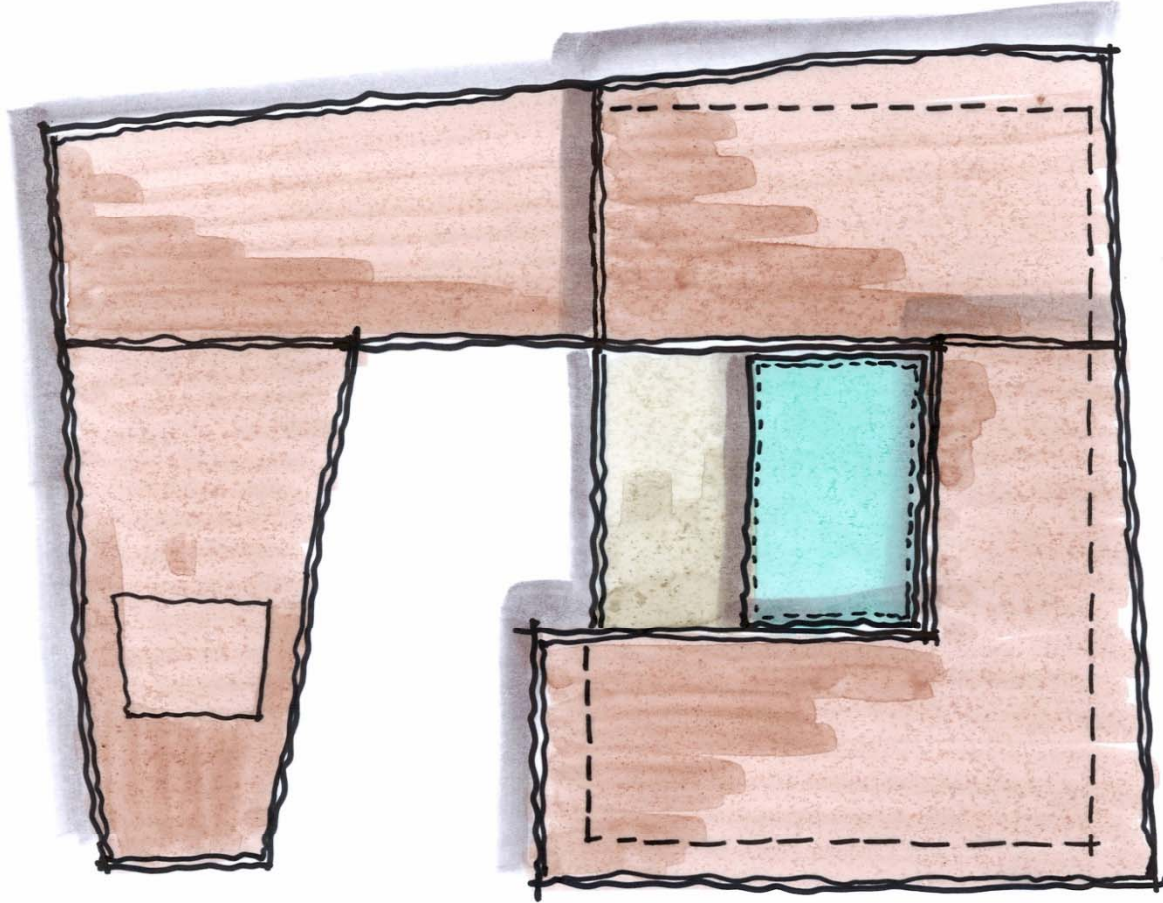
{ spiral }



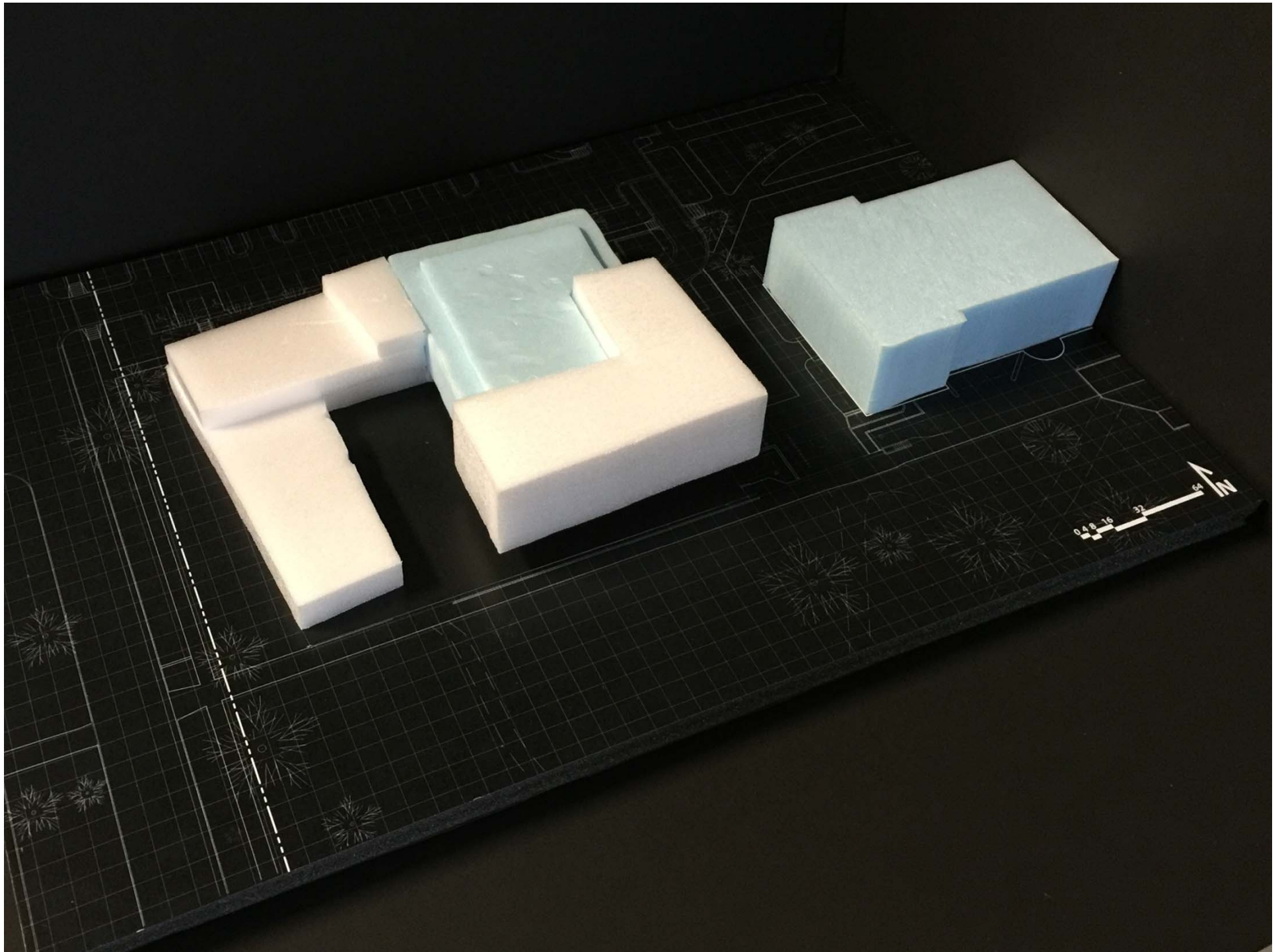
{ spiral }



{ spiral }



{ spiral }



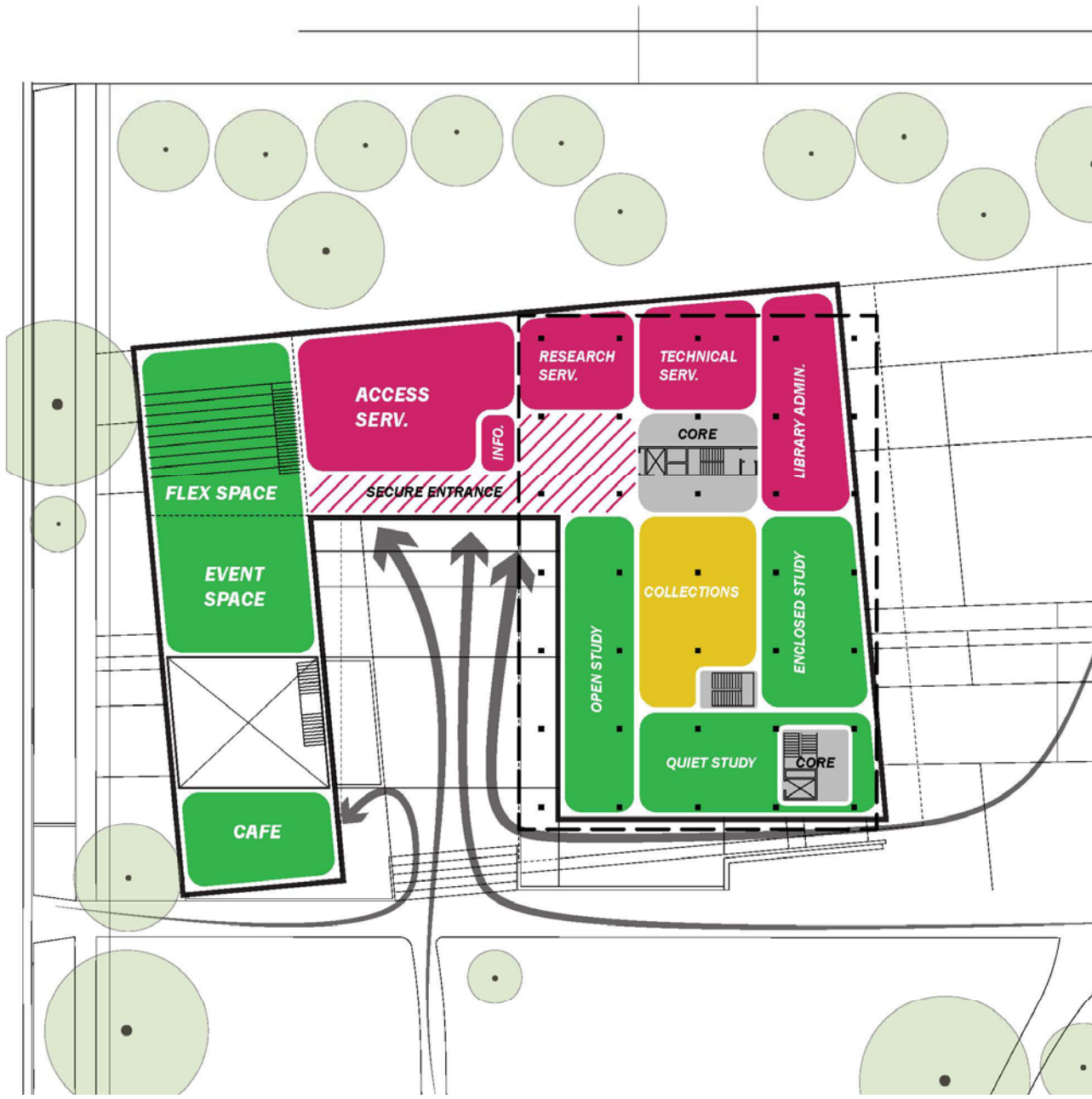


Legend

- 1.0 - User Space
- 2.0 - Collection Area
- 3.0 - Library Staffing & Services
- 4.0 - Colket Center for Academic Excellence
- 5.0 - Information Technology Services
- 6.0 - Non-Library Partners
- 7.0 - Building Support

LOWER LEVEL



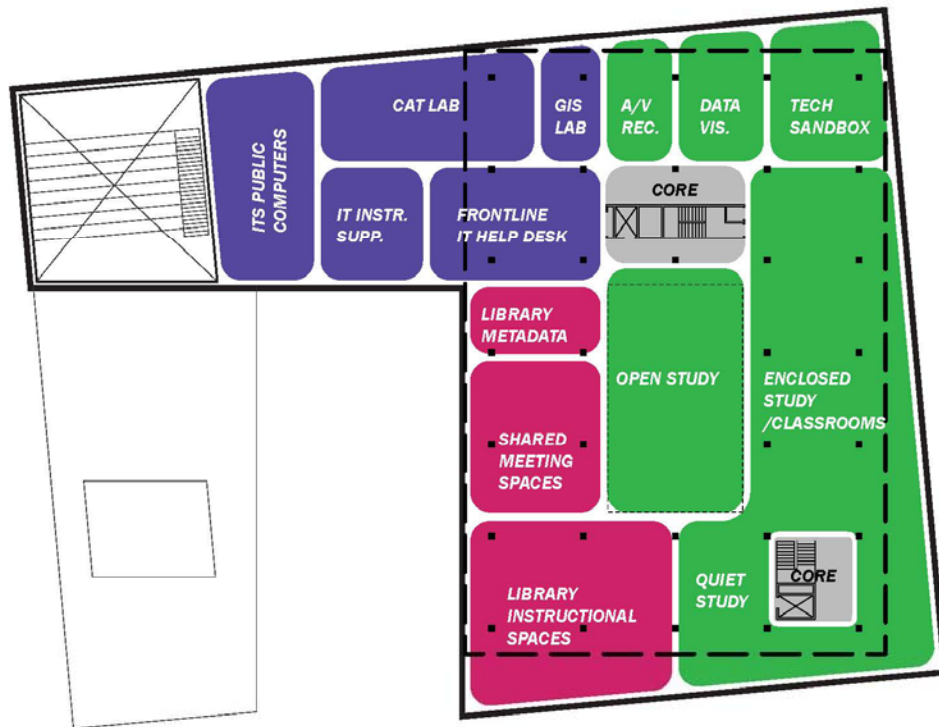


Legend

-  1.0 - User Space
-  2.0 - Collection Area
-  3.0 - Library Staffing & Services
-  4.0 - Colket Center for Academic Excellence
-  5.0 - Information Technology Services
-  6.0 - Non-Library Partners
-  7.0 - Building Support

ENTRY LEVEL



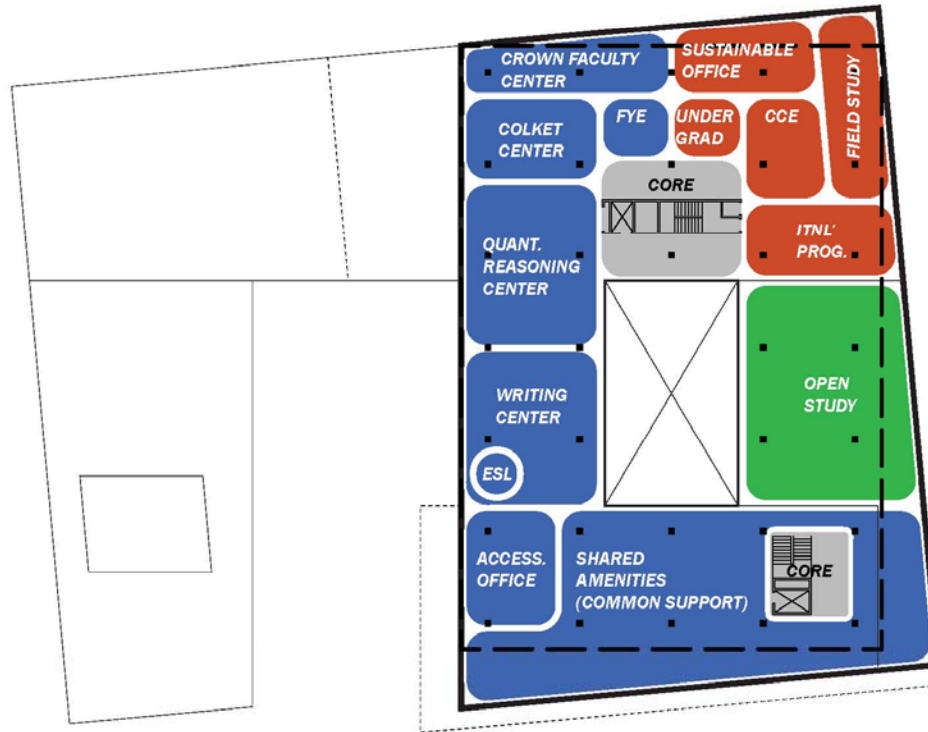


Legend

- 1.0 - User Space
- 2.0 - Collection Area
- 3.0 - Library Staffing & Services
- 4.0 - Colket Center for Academic Excellence
- 5.0 - Information Technology Services
- 6.0 - Non-Library Partners
- 7.0 - Building Support

LEVEL 2



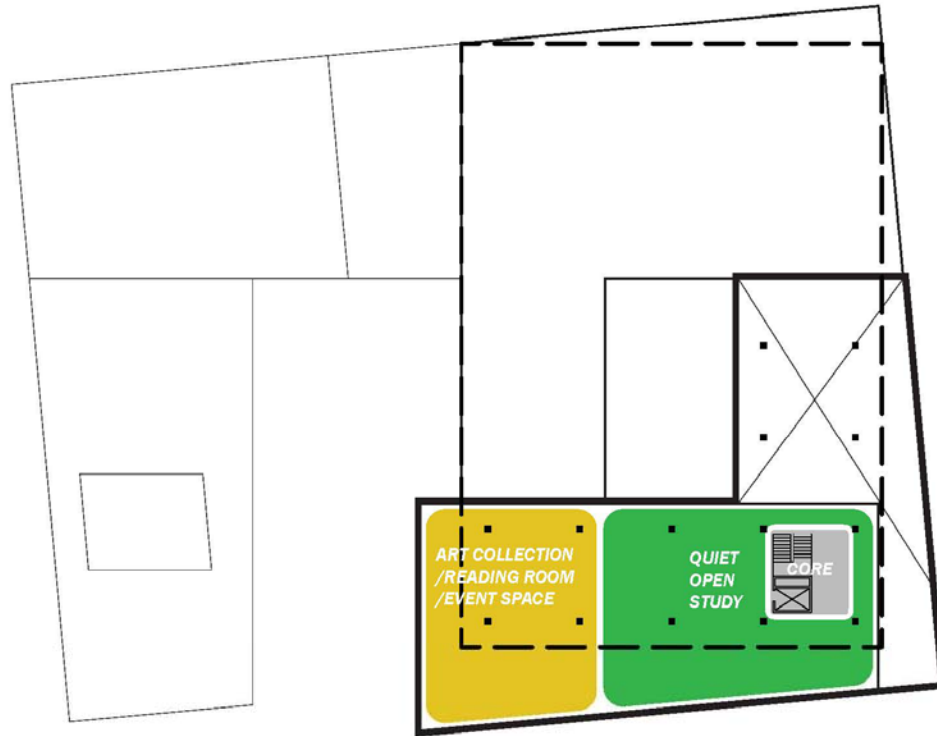


Legend

- 1.0 - User Space
- 2.0 - Collection Area
- 3.0 - Library Staffing & Services
- 4.0 - Colket Center for Academic Excellence
- 5.0 - Information Technology Services
- 6.0 - Non-Library Partners
- 7.0 - Building Support

LEVEL 3





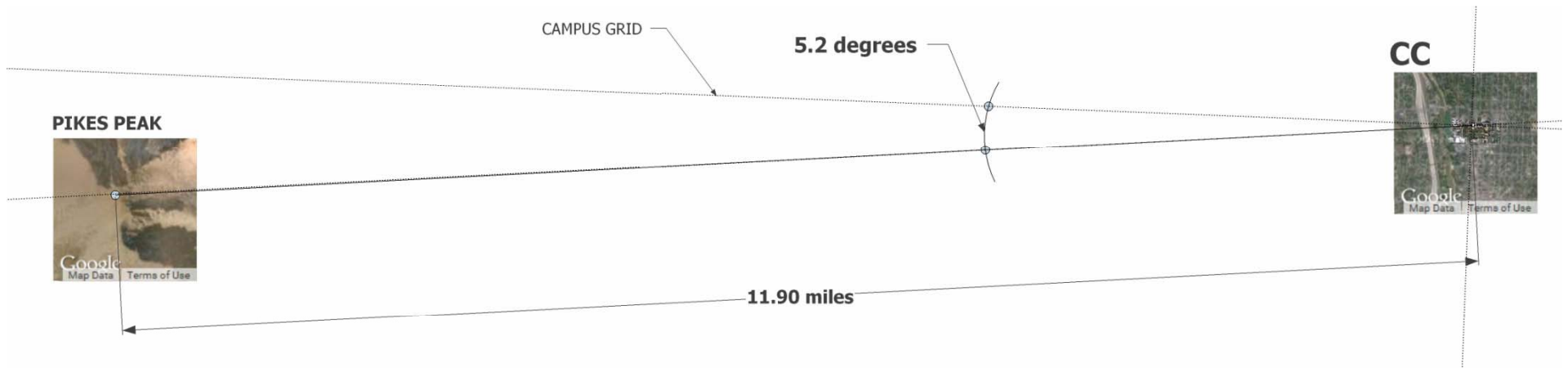
Legend

-  1.0 - User Space
-  2.0 - Collection Area
-  3.0 - Library Staffing & Services
-  4.0 - Colket Center for Academic Excellence
-  5.0 - Information Technology Services
-  6.0 - Non-Library Partners
-  7.0 - Building Support

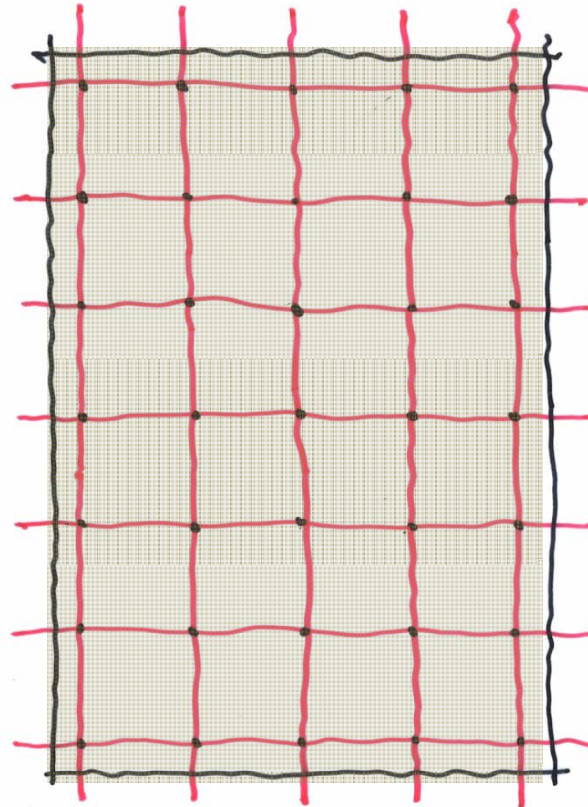
LEVEL 4



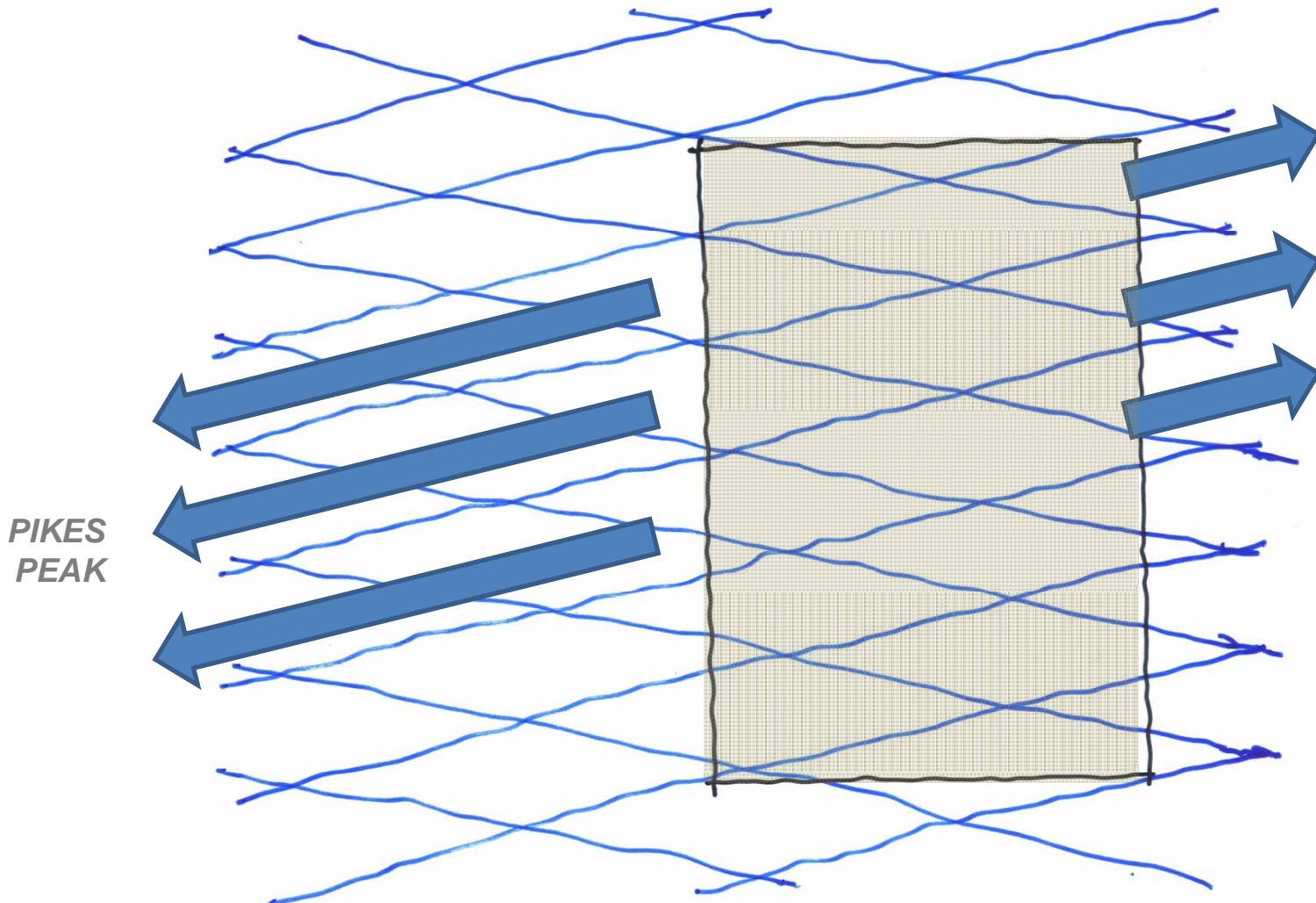
{ **switchback** }



*EXISTING BUILDING
WALTER NETSCH FIELD THEORY
OF ORGANIZING LIBRARY
[ABSTRACT]*

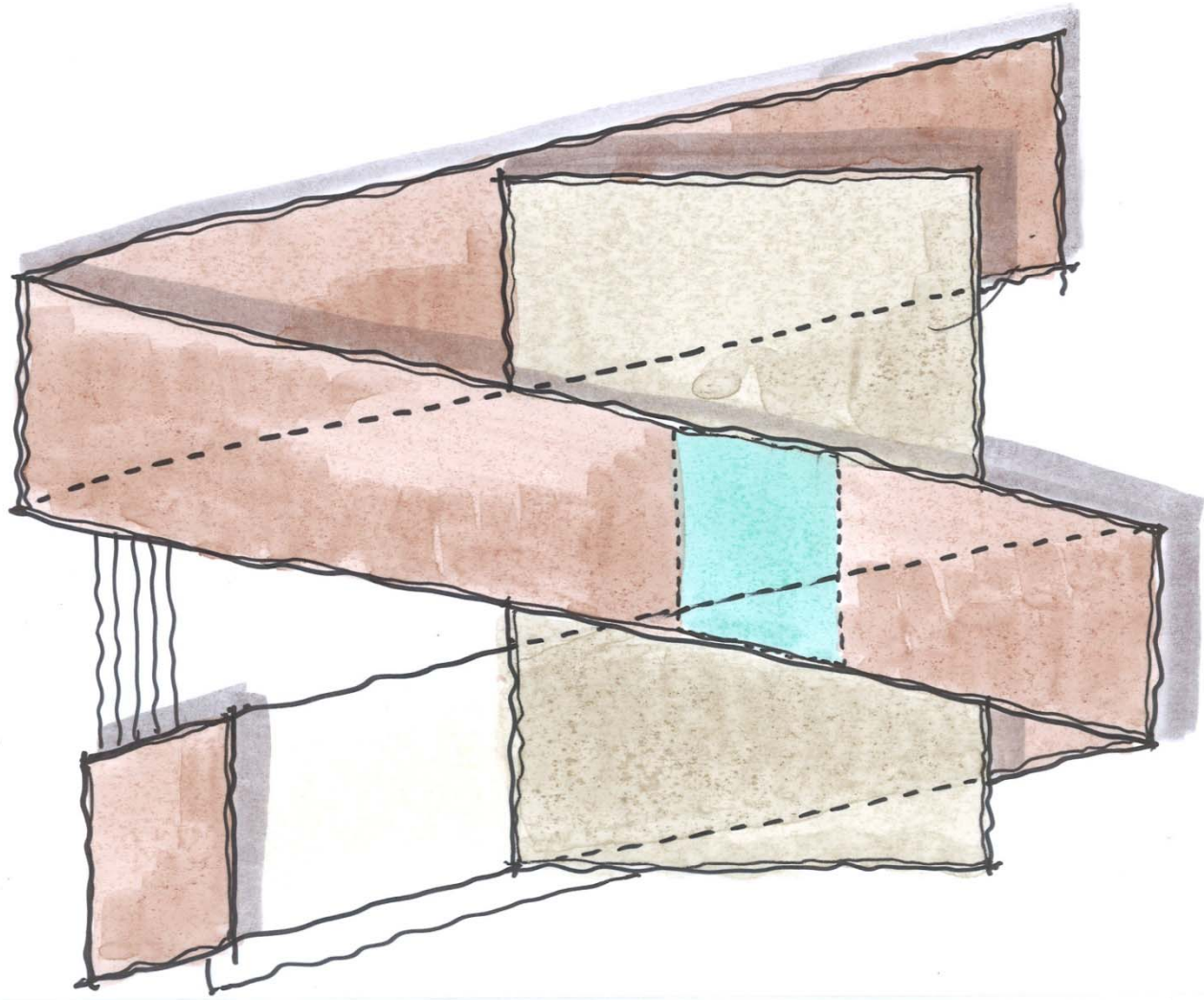


{ switchback }

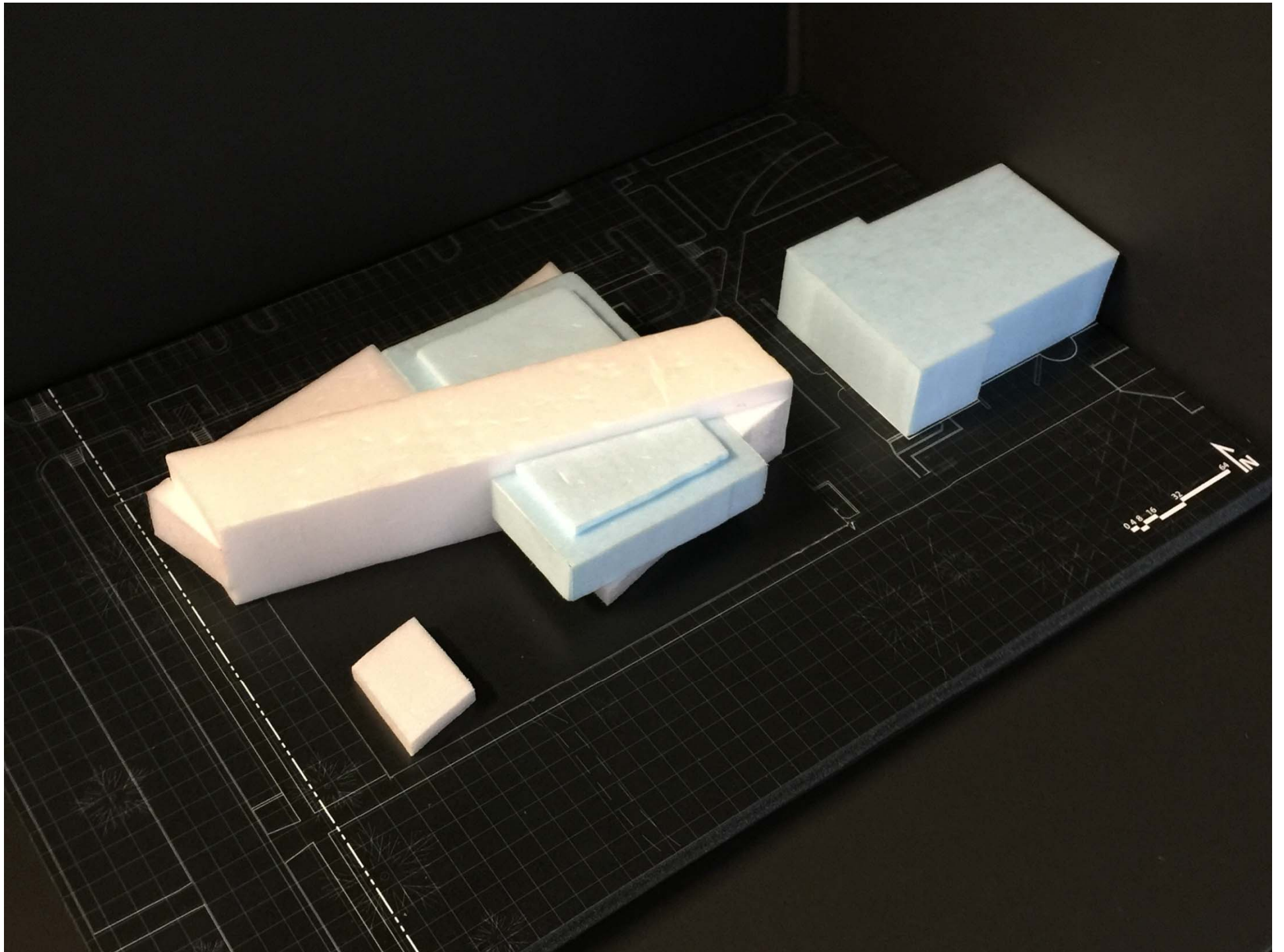


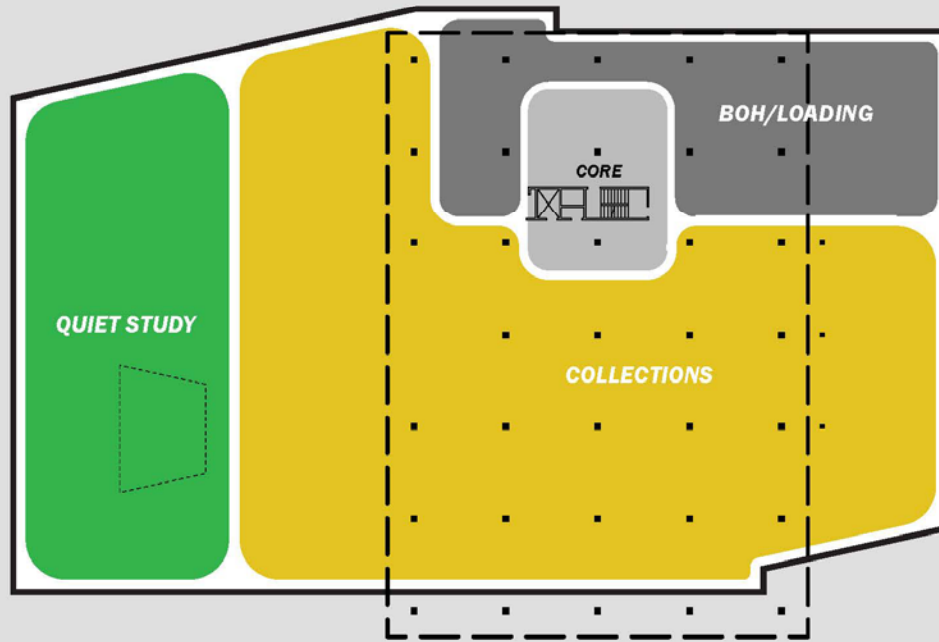
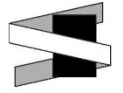
NEW OVERLAY GRID [EXPERIENTIAL]

{ switchback }



{ switchback }



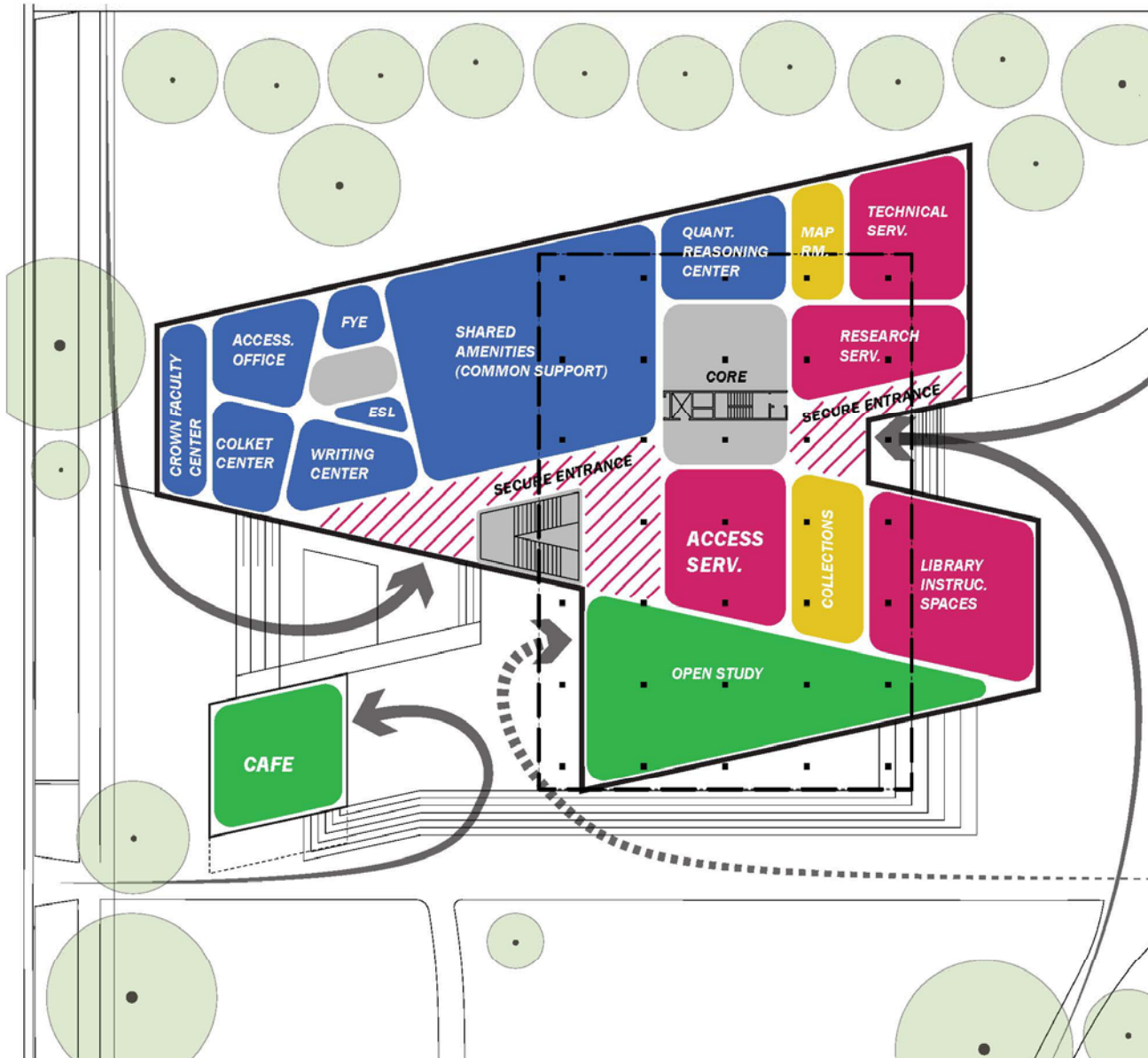
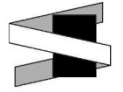


Legend

- 1.0 - User Space
- 2.0 - Collection Area
- 3.0 - Library Staffing & Services
- 4.0 - Colket Center for Academic Excellence
- 5.0 - Information Technology Services
- 6.0 - Non-Library Partners
- 7.0 - Building Support

LOWER LEVEL



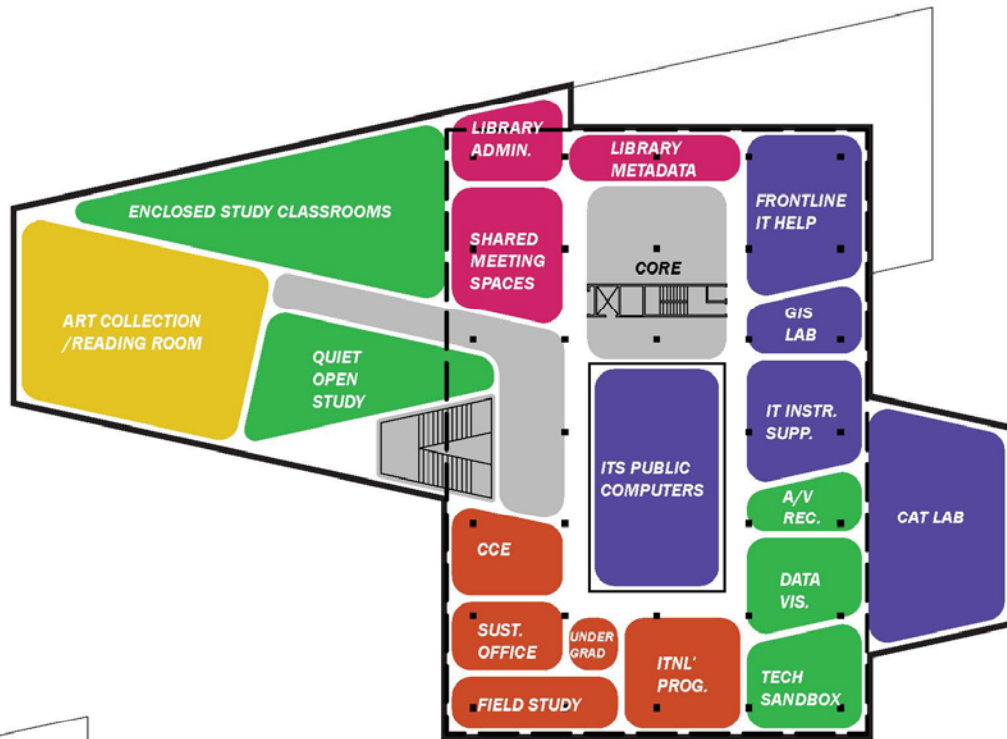
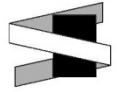


Legend

-  1.0 - User Space
-  2.0 - Collection Area
-  3.0 - Library Staffing & Services
-  4.0 - Colket Center for Academic Excellence
-  5.0 - Information Technology Services
-  6.0 - Non-Library Partners
-  7.0 - Building Support

ENTRY LEVEL



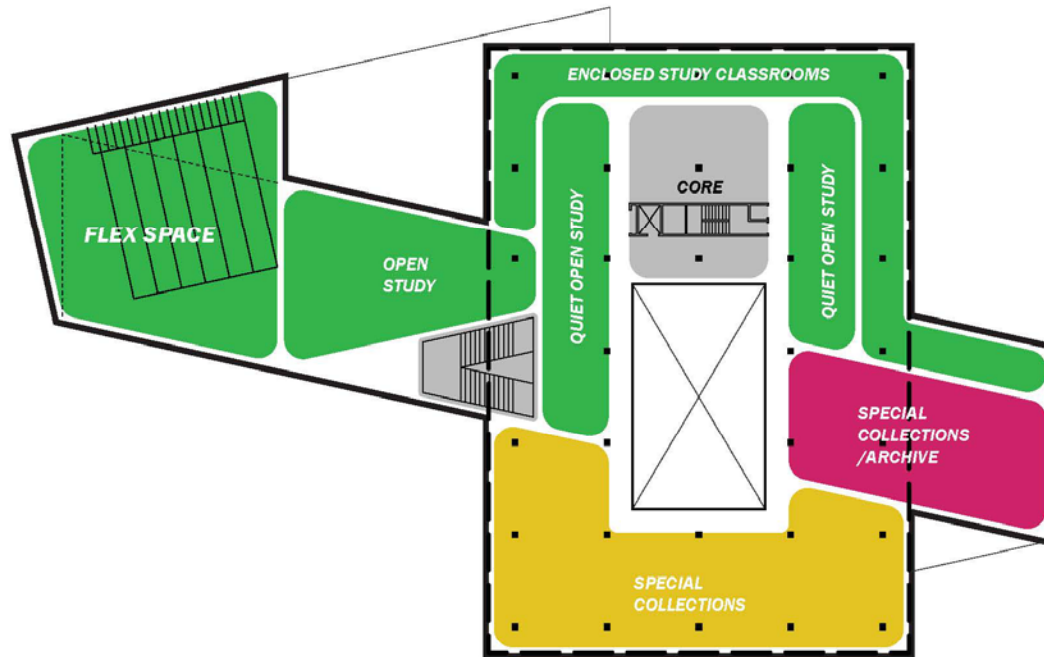
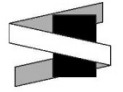


Legend

- 1.0 - User Space
- 2.0 - Collection Area
- 3.0 - Library Staffing & Services
- 4.0 - Colket Center for Academic Excellence
- 5.0 - Information Technology Services
- 6.0 - Non-Library Partners
- 7.0 - Building Support

LEVEL 2



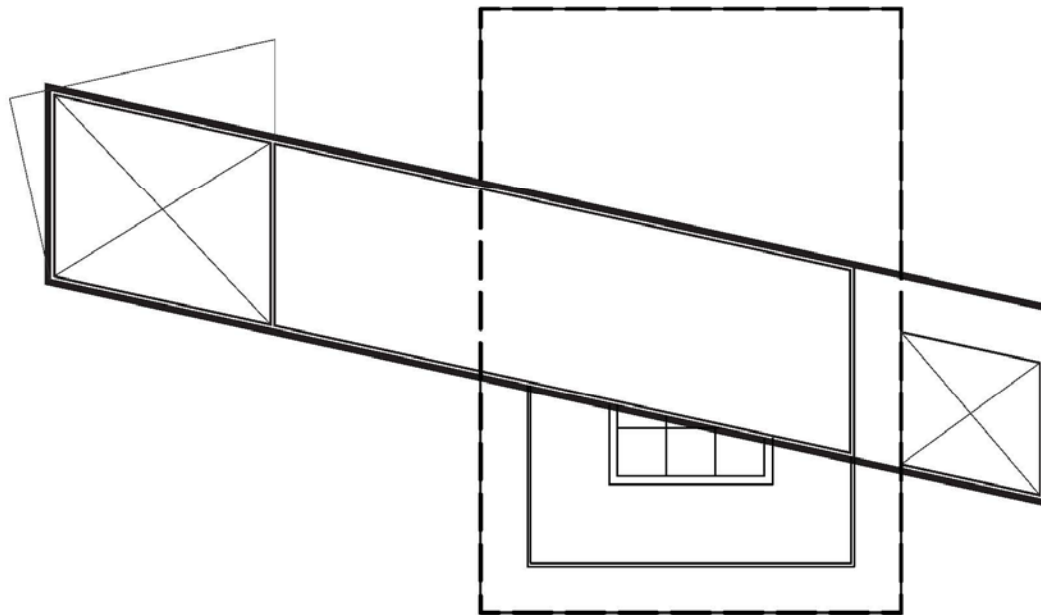
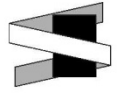


Legend

- 1.0 - User Space
- 2.0 - Collection Area
- 3.0 - Library Staffing & Services
- 4.0 - Colket Center for Academic Excellence
- 5.0 - Information Technology Services
- 6.0 - Non-Library Partners
- 7.0 - Building Support

LEVEL 3





Legend

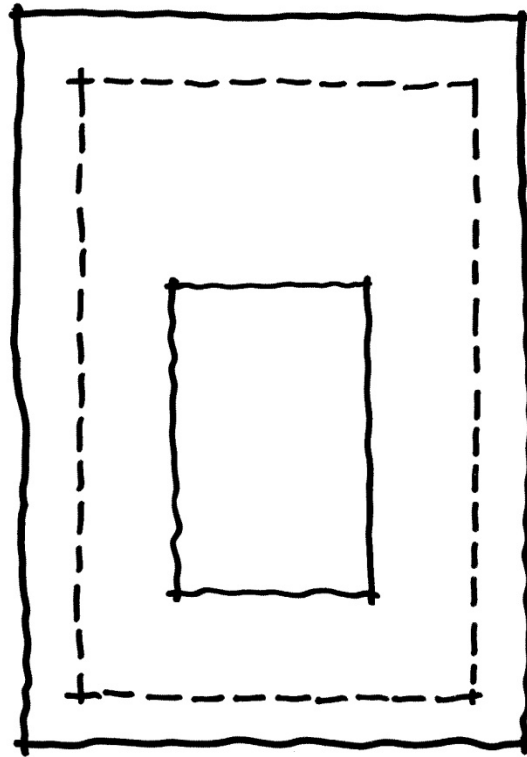
-  1.0 - User Space
-  2.0 - Collection Area
-  3.0 - Library Staffing & Services
-  4.0 - Colket Center for Academic Excellence
-  5.0 - Information Technology Services
-  6.0 - Non-Library Partners
-  7.0 - Building Support

ROOF LEVEL

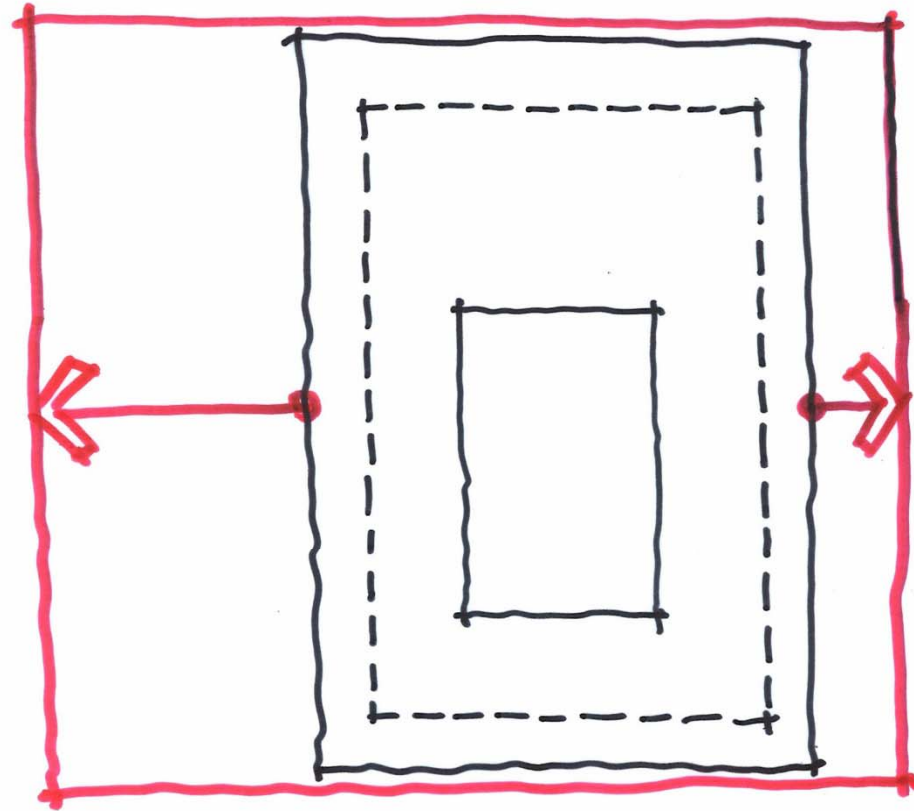


{ rotation }

EXISTING TUTT LIBRARY



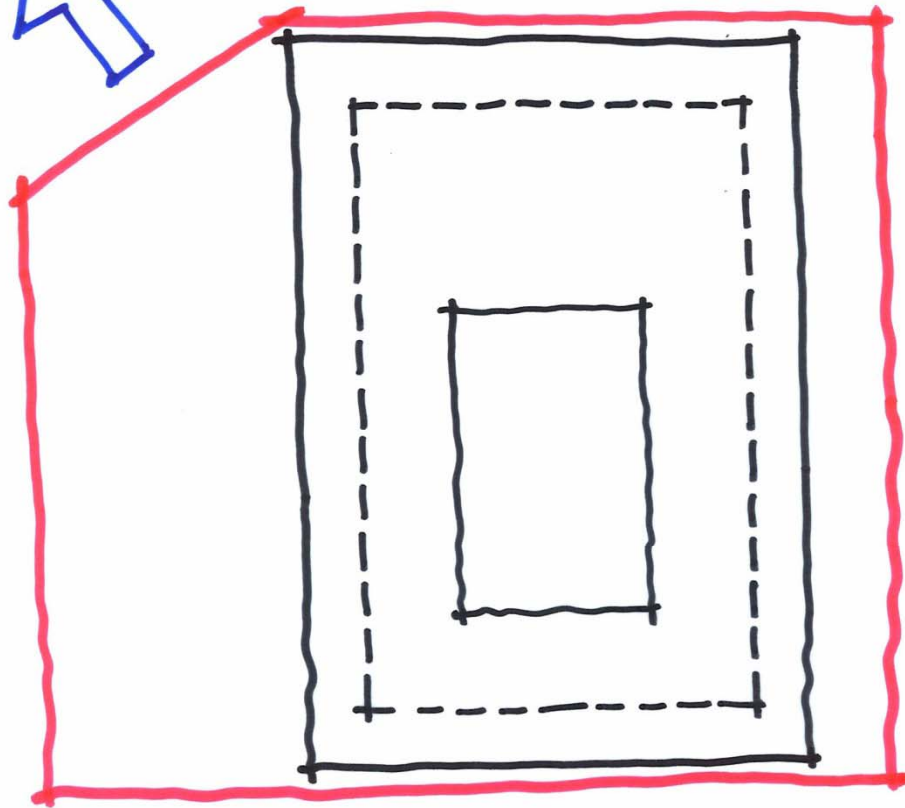
{ rotation }



EXPAND EXISTING BUILDING MASSING CONCEPT

{ rotation }

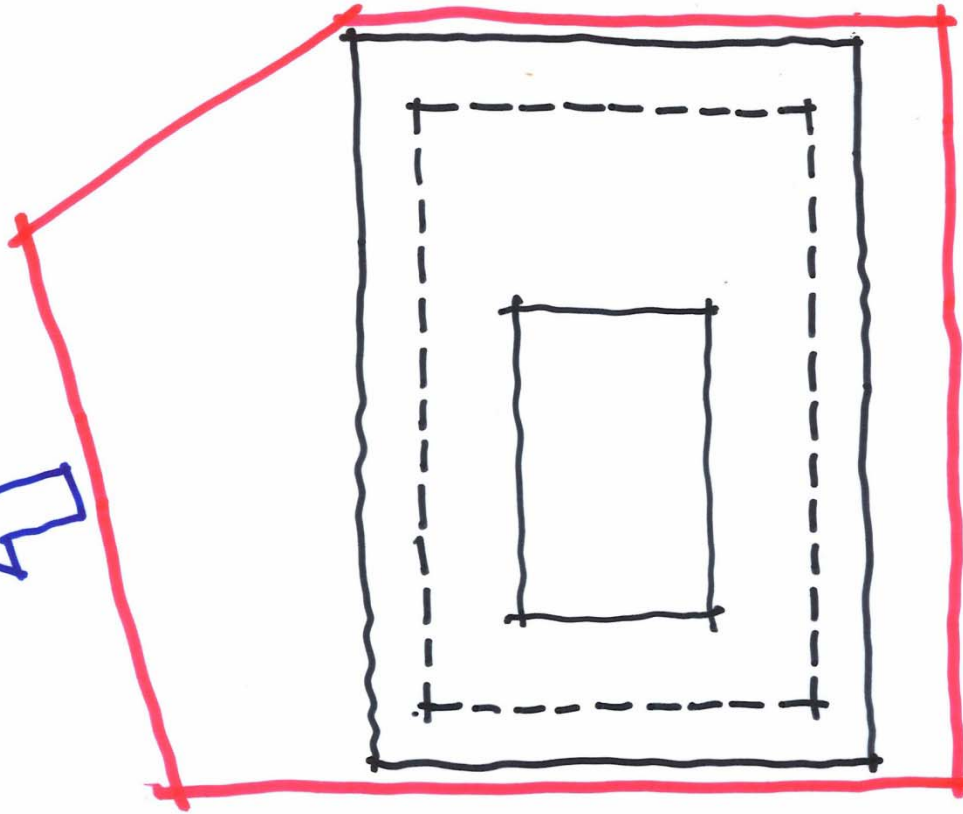
ORIENTATION
TO NORTH CASCADE
CAMPUS APPROACH



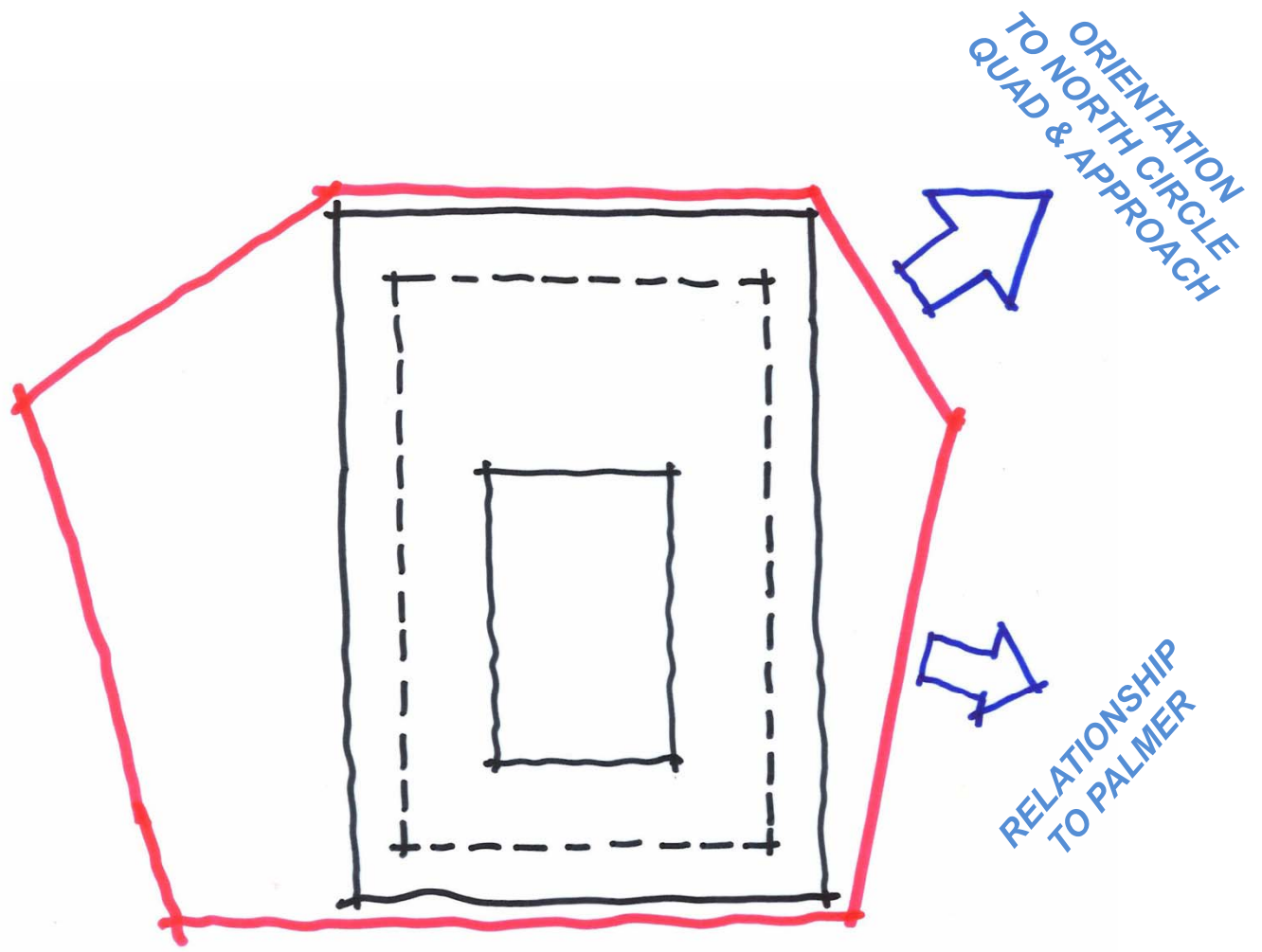
BUILDING CARVED
TO RESPOND TO ENVIRONMENT

{ rotation }

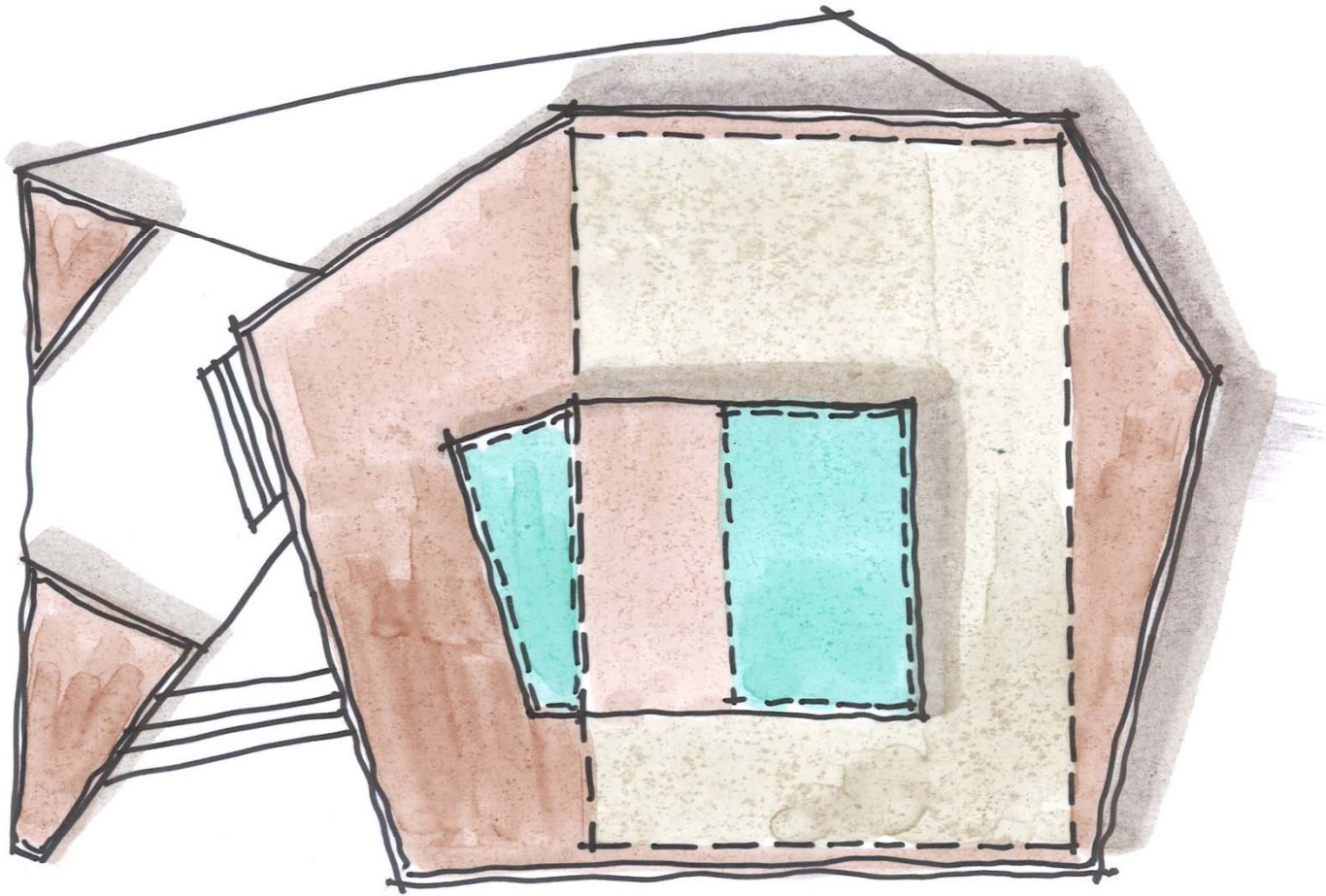
ORIENTATION & VIEW
TO PIKES PEAK



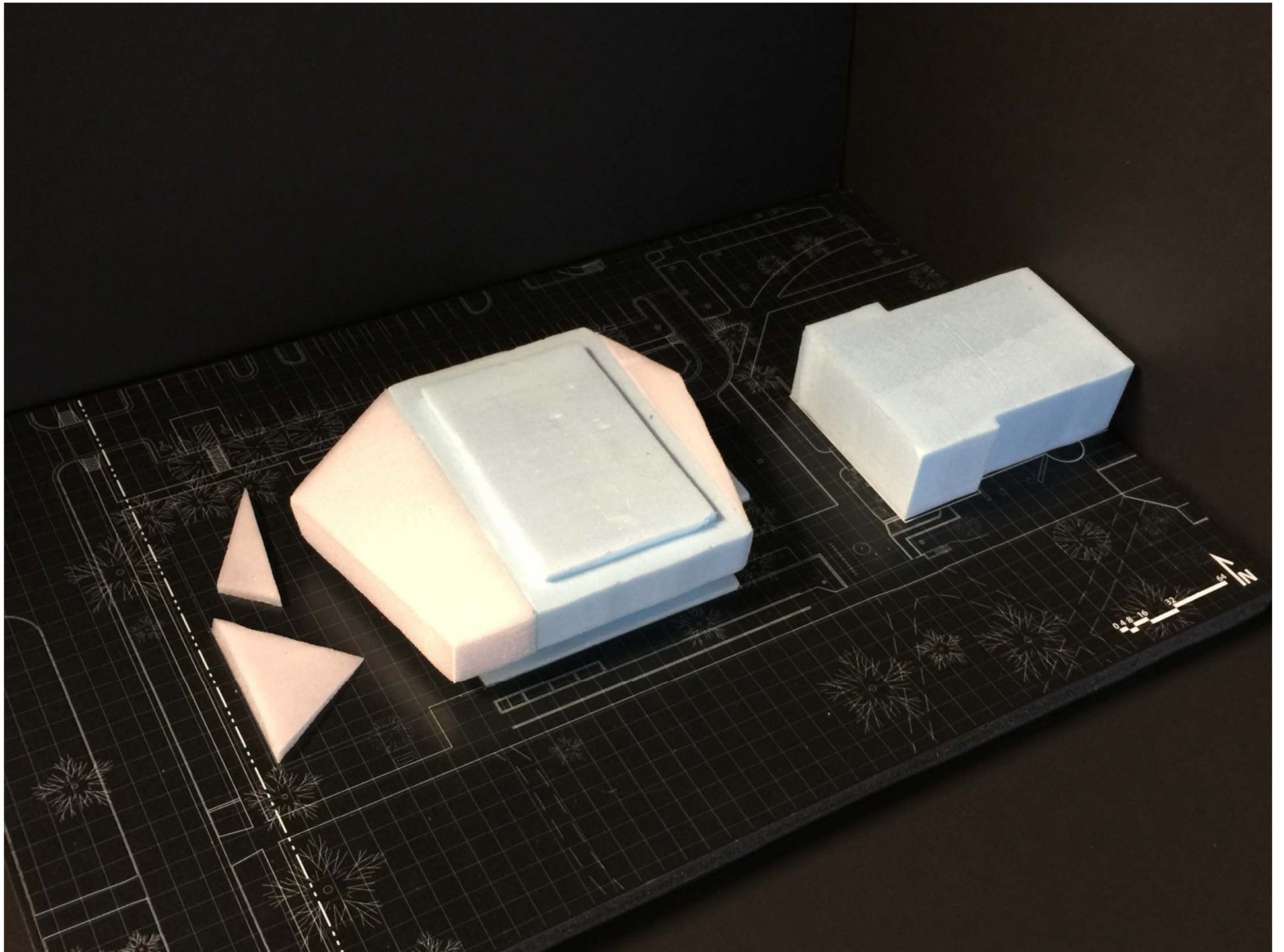
{ rotation }

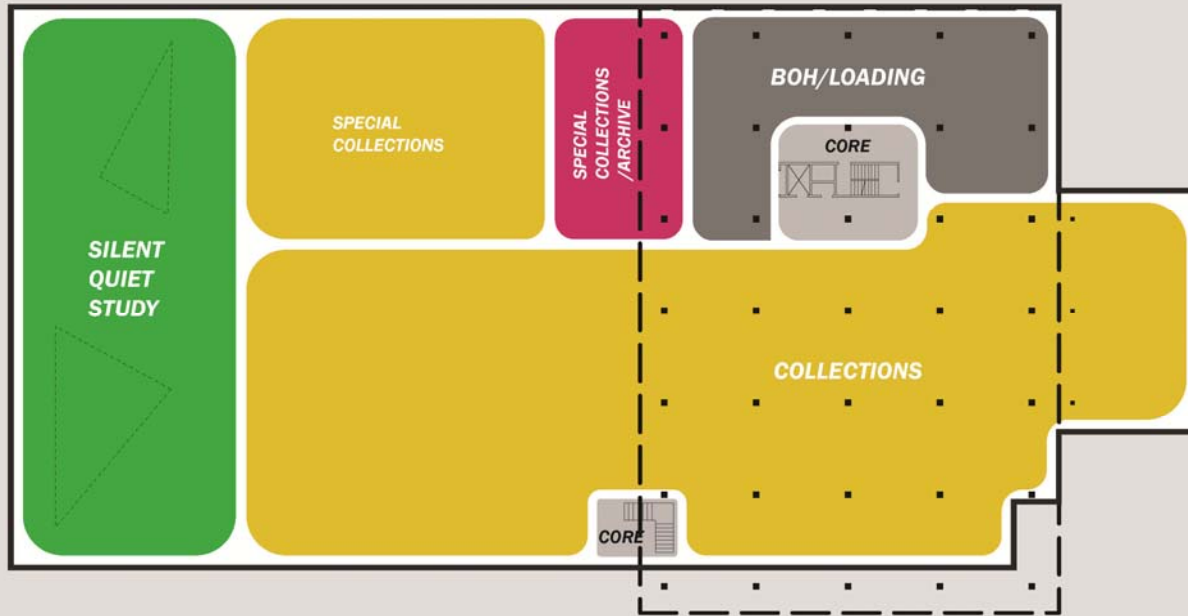


{ rotation }



{ rotation }





Legend

-  1.0 - User Space
-  2.0 - Collection Area
-  3.0 - Library Staffing & Services
-  4.0 - Colket Center for Academic Excellence
-  5.0 - Information Technology Services
-  6.0 - Non-Library Partners
-  7.0 - Building Support

LOWER LEVEL

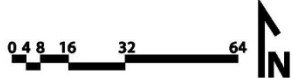


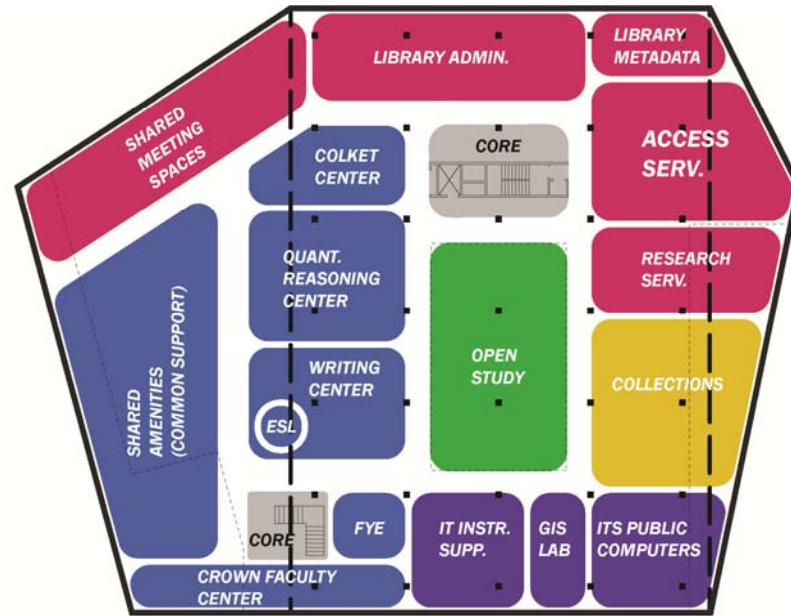


Legend

- 1.0 - User Space
- 2.0 - Collection Area
- 3.0 - Library Staffing & Services
- 4.0 - Colket Center for Academic Excellence
- 5.0 - Information Technology Services
- 6.0 - Non-Library Partners
- 7.0 - Building Support

ENTRY LEVEL

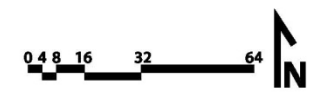


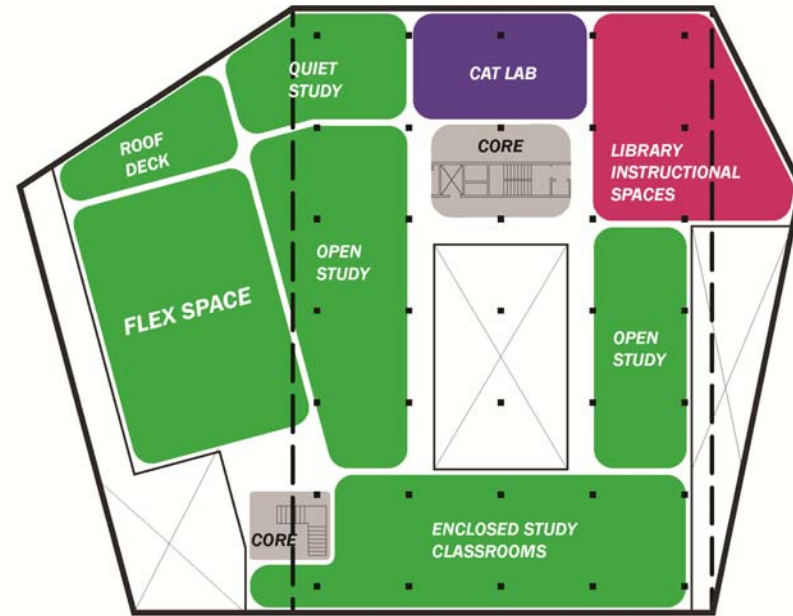


Legend

- 1.0 - User Space
- 2.0 - Collection Area
- 3.0 - Library Staffing & Services
- 4.0 - Colket Center for Academic Excellence
- 5.0 - Information Technology Services
- 6.0 - Non-Library Partners
- 7.0 - Building Support

LEVEL 2





Legend

-  1.0 - User Space
-  2.0 - Collection Area
-  3.0 - Library Staffing & Services
-  4.0 - Colket Center for Academic Excellence
-  5.0 - Information Technology Services
-  6.0 - Non-Library Partners
-  7.0 - Building Support

LEVEL 3

