



THE WOMAN'S EDUCATIONAL SOCIETY
of COLORADO COLLEGE

Newsfocus

FALL 2013

FOUNDED IN 1889 TO GIVE ASSISTANCE TO THE STUDENTS OF COLORADO COLLEGE

Welcome To Our New WES Scholars!



Stephanie Bui was born in New Orleans, Louisiana and had a lively childhood in Murrieta, California and Sugar Land, Texas. She is a first-generation Vietnamese-American and a first-generation college student and believes her interest in art helped develop her blossoming communication

skills. She now pursues a wide variety of interests from analytical science to visual poetry. During her time at Stephen F. Austin High School, Stephanie became an avid volunteer, impassioned activist, political intern and an integral part of her school's national and international Thespian, English, and Art honor societies. Stephanie was the captain of her school's state-acclaimed academic decathlon team and received academic honors as an Advanced Placement scholar with distinction. In her leisure time, Stephanie enjoys TV series, reading novels and poetry, writing fiction, painting portraits, and understanding math theories. Stephanie is grateful for the assistance of WES and following her studies at Colorado College she intends to become a neuroscientist.



Anastassia Doktorova (Ana) was born in Bryansk, Russia and moved to Pueblo, Colorado at the age of six. She graduated from Central High School and was involved in many extracurricular activities including orchestra, choir, drama club, the Math Engineering Science Achievement (MESA)

Club, Speech and Debate Club, tennis, volleyball, dance team, Girls Cabinet, and the National Honor Society.

Her favorite memories are from her time in orchestra class, at the state meets for speech and debate, and planning a fashion show through Girls Cabinet to raise money for a local cancer center. Ana also enjoys the Colorado great outdoors. She takes every opportunity to get outside, participating in and teaching at programs like Ambassadors for Wilderness and the San Isabel Scout Ranch. She also hikes fourteeners during the summer. Ana has a wide variety of interests, but plans to settle on mathematics as her intended major. She is grateful for the scholarship from the Woman's Educational Society and is excited to start her journey at Colorado College with a network of fellow exceptional young ladies by her side.

Madeleine Garcia was born and raised in Denver, Colorado with her two younger sisters, ages ten and fourteen. During her four years at East High School, Madeleine was a member of Key Club and the Women in Science club, a board member of the National Honor Society,



president of Adopt-a-Family Club, captain of the varsity field hockey team and Editor-in-Chief of the yearbook staff. She has been a member of Girl Scouts for over ten years and recently received her Gold Award, the highest honor given to a Girl Scout. Her service project for the Gold Award was leading a program to help battered women and children at a local shelter develop artistic skills. Through her Girl Scout troop she has volunteered at St. Elizabeth's soup kitchen and the Dolores Project, a homeless shelter for women. Madeleine loves working with kids and has volunteered at a local elementary school and worked at a math camp helping young children

Newsfocus

FALL 2013

The WOMAN'S EDUCATIONAL SOCIETY (WES) is an autonomous community organization founded on April 20, 1889, to foster support of Colorado College. Its purposes are to bring community and college together, to give assistance to students of the college, and to undertake programs and projects to benefit the college, particularly women of the college. Gifts to WES are tax-deductible. *Newsfocus* is published twice a year as a service to members and friends of WES.

2013-2014 BOARD OF MANAGERS

Michelle Beckmann, Diane Benninghoff, Meg Chojnacki, Lana Coffman, Elaine Derbenwick, Sue Graham, Laura Hagler, Rhonda Heschel, Barbara Mitchell, Candace Santa Maria, Shirley Woolley, Beth Zautke.

WES OFFICERS

Co-Presidents: Lana Coffman, Beth Zautke
First Vice President: Diane Benninghoff
Second Vice President: Sue Graham
Recording Secretary: Shirley Woolley
Corresponding Secretary: Rhonda Heschel
Treasurer: Barbara Mitchell
Assistant Treasurer: Elaine Derbenwick

COMMITTEE CHAIRS

Executive: Lana Coffman, Beth Zautke
Finance: Barbara Mitchell, Shirley Woolley
Fundraising/Projects: Lana Coffman
Membership: Barbara Mitchell, Shirley Woolley
Nominating: Shirley Woolley
Program: Sue Graham
Publicity: Rhonda Heschel
Scholarship: Meg Chojnacki, Laura Hagler
Ad Hoc: Sue Dilloway, Sally Metzger

Message from the Co-Presidents



We are excited to launch the 2013-2014 academic year and look forward to meeting our WES freshman scholars, another outstanding group of young women!

The WES committees have been very productive this past year with a strong focus on Finance and a successful June trip, Ranches, Foundries, Peaks, & Science, organized by the Fundraising Committee. These popular trips, begun by Dr. Marianne Stoller, continue to raise scholarship funds and innovative ideas for future trips are on the horizon. The Scholarship and Program Committees have planned activities for the upcoming

year that will be interesting to all and our Publicity Committee continues to provide the support to make events happen. Additionally, the Membership Committee continues to broaden the base of the organization.

With traditions organized by Mary Slocum in 1889, WES will be 125 years old next year. An Ad Hoc Committee chaired by Sally Metzger and Sue Dilloway was formed to give additional support to this special year's events with the grand celebration on Sat., April 26, 2014, in Bemis Hall. Plans continue to supplement *A Quiet Work*, the booklet that originally commemorated our 100th anniversary and was edited by Barbara Arnest.

We have said farewell to long-serving Board Members and look forward to working with new members. Please consider joining us as we continue to help outstanding students at Colorado College. Thank you to all loyal WES members with the reminder that our membership remains a key factor in the financial support of our scholars. Please renew your dues, spread the word to your friends, and continue to check our website and contact us at WES@coloradocollege.edu or (719) 389-7699.

— Lana Coffman
Beth Zautke

New WES Scholars, *continued from front page*

develop numerical fluency. She has also operated a neighborhood art camp during the summer for the past seven years. Madeleine plans to study biology and sociology at Colorado College and then continue on to medical school to become a pediatrician.



Grace Guryan was born in Hailey, Idaho and moved to Boise in 2009 where she attended Riverstone International School's International Baccalaureate program. During high school she pursued a variety of passions. She played basketball all four years and served as captain during her

senior year. She spent three years volunteering for the Idaho Meth Project, promoting drug awareness statewide. During her senior year, she served as chairwoman of the project's Teen Advisory Council and helped teens all over Idaho build awareness and fund-raise in their communities. Grace also has a passion for conservation and spent her summers volunteering for Zoo Boise. In her free time she pursues her love of the outdoors. Grace has enjoyed hiking, camping, and rafting from a very young age and is an avid backpacker. She was a member of Venturing Crew 94 and served as a student leader on her school's outdoor program trips. One of her most memorable experiences was mentoring 6th grade students during a week-long trip to Yellowstone National Park. Grace finds a great deal of fulfillment in working with younger students and also helped elementary school students produce videos to send to their sister schools around the world. At Colorado College, Grace plans to major in geology and continue to explore her passions for service and the outdoors.

Natasha Riveron was born in Toledo, Ohio and is a first generation Cuban-American. She graduated from Maumee Valley Country Day School and was recognized as a member of the Cum Laude and Honors societies, a National Merit Scholar and National Hispanic Scholar. Natasha



was a member of her school's drama club and was president during her senior year. She also participated in a number of community drama programs. Some of her favorite roles include Anna in "The King and I," Meg in "Brigadoon," Mrs. Gibbs in "Our Town," and Maria in "The Sound of Music." She helped co-found an educational theatre program for underprivileged children and worked as the student director for a summer theatre camp at an inner city school. Natasha pursued a variety of interests and was a member of her school's Republican club, Gay-Straight Alliance, choir and Student Ambassadors. She was elected as class representative on student council for three consecutive years and as the student representative on the school's Curriculum Committee. In recognition of her achievements, Natasha was awarded the Maumee Valley Communication Award by the high school faculty. Natasha has a passion for the Spanish language and completed an independent study in Copán Ruinas, Honduras where she lived with a host family and volunteered at the Mayatan Bilingual School. She plans to continue pursuing her passion for Spanish and eventually attend medical school. She is honored to have been selected by WES to be part of such a strong, supportive group of women and she is excited to begin her adventures at Colorado College.



WES would like to extend a special welcome to our new Anniversary Scholar. **Anna Skrabacz** is transferring to Colorado College from Lewis and Clark College in Portland, Oregon. At Lewis and Clark Anna was an active member of the Student Feminist Union helping to organize speakers and craft nights. Before attending Lewis and Clark Anna graduated from Colorado Academy in Denver in 2012. Anna attended her last two years of high school at Colorado Academy where she especially enjoyed English and history and was featured in both of the high school's literary magazines. Prior to her stint at Colorado Academy, Anna lived in Jackson Hole, Wyoming where she was a junior member of the Off Square Theater Company. Anna is excited to be transferring to Colorado College and will most likely major in New Media and Film Studies.

Board Initiatives for Celebrating the 125th Anniversary of WES

A Quiet Work Continues: WES in Its Second Century. 1989-2014

In the spring of 2011 immediately after being elected co-president of the WES Board of Managers, Caroline Vulgamore proposed that the board consider writing a supplement to *A Quiet Work*. This history of one hundred years of WES was edited by Barbara Arnest and created to celebrate our centennial anniversary. Sue Dilloway and Sally Metzger volunteered to be the co-chairs of an ad hoc committee which was formed in order to bring Caroline's idea to life.

Sue and Sally were joined by committee members Barbara Arnest, Diane Benninghoff, Andrea Corley, Marianna McJimsey and Jeanne Stiles. Marianna was named the publishing director and all members participated in researching ideas, writing articles and gathering photos.

Tutt Library Curator of Special Collections Jessy Randall, designer Stormy Burns, editor Caroline Vulgamore and proof reader Helen Richardson all contributed their talents to the project as well. At the June 2013 board meeting, the committee revealed that the layout is designed to look like the original *A Quiet Work* but will have color photos instead of black and white. *A Quiet Work Continues: WES in Its Second Century. 1989-2014*, will be unveiled at the 125th Anniversary Annual Meeting and Celebration on April 26, 2014.

Mary G. Slocum Founders Grant Fund

The Dorothy P. Bryson Fund was established in December 1994 in honor of the 100th birthday of a distinguished member of WES and the Colorado College community. Each year a total of \$2,500 from this fund is allotted for special assistance. The 2012 – 2013 WES Board of Managers established the Mary G. Slocum Founders Grant in recognition of the upcoming 125th anniversary. This effectively doubles the total sum available to WES scholars for off-campus studies and special projects. The first recipients of this grant will be selected during the 2013 – 2014 academic year.

Ad hoc Committee Reports by Sally Metzger

A Quiet Work Continues

The rough draft has one more editorial reading then it will be sent to the publisher by the end of the year. We're planning on having it finished in time for its unveiling at the April 26 Annual Meeting and Anniversary Party.

Anniversary Committee

A letter is being sent to the former scholars who answered our questionnaire and indicated that they were planning on coming back to campus during the coming school year. The letter gives them the dates for our programs as well as the all-important date for the April celebration. The committee will meet in the spring to finalize invitations, decorations, food and program.

*The Woman's Educational Society regrets to inform
the membership of the death of member Doris Ordahl.*

Save the Date for these Exciting WES Events!

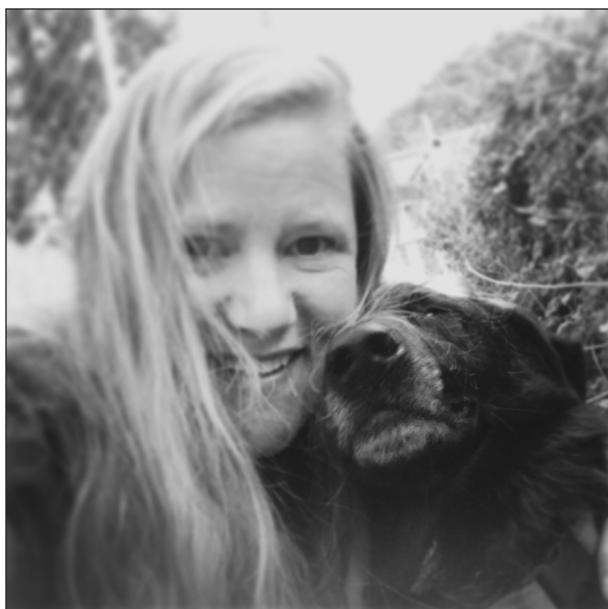


Scholars' Tea - September 19th at Stewart House.
Come meet the scholars and reconnect with WES friends.

Fall Luncheon - October 17th
in Gaylord Hall, Worner Center
Speaker: Michael Howell, MFA, Collections Manager and
Registrar at the Colorado Springs Fine Arts Center.
“The Growing Relationship between The FAC and Colorado College.”

Winter Luncheon - January 30th at Gaylord Hall, Worner Center.

*Happy 125th Anniversary to the Woman's Educational Society!
Our Celebration will be April 26th at Bemis. See you there!*



WES is delighted to welcome **Michelle Beckmann** as the newest member of the board. Michelle has worked at Colorado College since January of 2013. She is the Advancement Operations Coordinator and spends much of her time on recruitment efforts for the division. Prior to CC, she was the Publisher's Executive Assistant at The Gazette for more than 12 years. While there she enjoyed many facets of her job, including serving as the Secretary of the Gazette Charities Board of Directors. She came to the Pikes Peak Region in 1997 from the Minneapolis, Minnesota area where she held various administrative and marketing positions. She went to college at Bemidji State University,

the University of Minnesota and Metropolitan State University. She currently lives in Manitou Springs with her husband and six-year old twin daughters who have just started first grade.

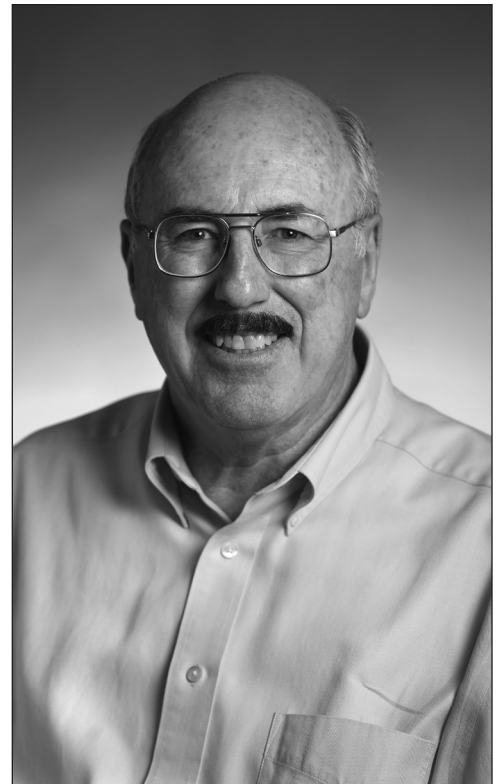
George Eckhardt Honored by History Colorado

WES owes a big thanks to Campus Planner George Eckhardt. Since WES began sponsoring tours of the Van Briggle Memorial Pottery Building in the late 1990s, George has played a major role in the success of these fundraisers. Always available on September Saturdays, George volunteers his time to come early, setting up equipment and spending the entire day talking to visitors about his collection of pottery pieces, old photos, catalogs and the history of this 1908 architectural treasure. His passion for the story of famed artist Artus Van Briggle and his wife Anne, who built the pottery building after her husband's death, is tireless.

CC purchased the building in 1968 and it has housed the college's facilities services since that time. George also promotes our WES Van Briggle notecards, bookmarks and self-tour booklets, keeping supplies so visitors can purchase them.

Last February George received the 2013 Stephen H. Hart Award for 15 years of historic preservation work on campus. The award, presented by History Colorado, cites his "excellent preservation work" at CC. George commented, "We are not just 'restoring' buildings, but rather restoring and enhancing or improving the functions, purpose and usefulness of our buildings. In the end, the true test is how much the occupants love their buildings."

Although WES will not be sponsoring Van Briggle tours this year, we know that when it comes to the Van Briggle Pottery, George Eckhardt "loves his building!"



Bob Loevy Donates Books to WES

Retired Professor of Political Science Robert D. Loevy has donated 30 copies each of his 2012 books to the WES Board: *Colorado College: 1999-2012: Into the 21st Century* and *A Colorado College Reader: Selected Writings on the History of Colorado College*. Board members can learn more about CC's history as well as recent developments on campus. Extra copies are also available to share with scholars.

A Colorado College Reader features a chapter on "A History of Gender at Colorado College" including a history of the Woman's Educational Society. Professor Loevy comments, "The WES is one of the most venerated organizations on the Colorado College campus."

Bob joined the CC faculty in 1968 where he served for 43 years. He remains a consultant and expert on Congress and civil rights, presidential elections and Colorado politics and government.



Spring Luncheon

At our spring luncheon, we had the pleasure of hearing updates from our wonderful senior WES scholars. This followed a talk by Dr. Janice Gould, Associate Professor of Women's & Ethnic Studies at UCCS. She spoke on "Doubting and Dreaming: Native American Women Write about the West."

We had fantastic attendance at the luncheon and several members have asked for the names of the writers Dr. Gould quoted in her presentation.

They are:

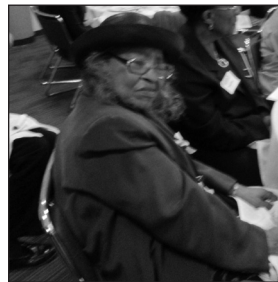
- Joy Harjo (Muskokee)
- Luci Tapahonso (Navajo)
- Ofelia Zepeda (Tohono O'odham)
- Janice Gould (Koyoonk'auwi)
- Linda Hogan (Chickasaw)



Dr. Gould has also graciously allowed us to share her poem, "Holy Wind."



Jeanne Stiles and scholar Mackenzie Mulligan-Buckmiller



Lillian Mallory



Dr. Janice Gould

Photo taken by Jason Ordaz.

Holy Wind by Janice Gould

The Navajo say wind enters us at birth, and when we die it spirals up and out through the tops of our heads, the whorls of fingers and toes.

Each spring, wind brings its shadows and troubles, slitting wide the sky, whipping topsoil into clouds of dust, corkscrews of red grit.

In summer, wind storms down canyons, veers off rocks, shears snow from the face of mountains shaking fire from the sky.

Wind nudges unfurled leaves and discourages sparrows who perch tenacious amid tossing branches.

Rattling panes of glass at night, wind flutes through cracks and under sills while stars whirl through the dark depths, heedless and distant. When sunrise shimmers at the edge of the mesa, we wake to roads swept hard, raked to a stony surface, and breathe a common breath. Wind is relative to each of us—animals, insects, earth, you and me.

It seems we are nothing but a vibrant residence sheltering that cadenced force, that vast sigh.



Meg Chojnacki and Sally Metzger



Sue Dilloway and Anniversary scholar Meg Simon



Lynn McLeod, Jean Jones, Lucy McLeod and Laurel McLeod



WES Journeys into Northern Colorado

Imagine discovering Cherokee Castle filled with art treasures on a secluded ranch in Douglas County. Or viewing planet earth's weather systems on a gigantic, suspended globe at the National Oceanic and Atmospheric Administration in Boulder. Or witnessing the pouring of molten stainless steel followed by a tour of Loveland sculpture parks. Did we mention a picnic in Rocky Mountain National Park (after learning how fire suppression contributes to the pine beetle problem) and staying at the Stanley Hotel listening to ghost stories? A lunch at the Dushanbe Tea House?

These were only some of the adventures WES fundraising committee members Lana Coffman, Cathy Wilson-O'Donnell and Sharon Rice packed into the latest WES trip on June 10-14. Travelers enjoyed the attention to detail, the "insider" educational experiences and the accommodations for which WES fundraising trips are famous. Most were repeat participants; some many times over from the days when Anthropology Professor Marianne Stoller planned the experiences. As always, \$100 from each person's fee went directly into the WES scholarship fund.

Thank you for your contributions: Beth Ann Bassein, James Bishop, Linda Bliss, Dawn Brower, Duncan Burdick, Judy Burdick, Ann Burek, Lana Coffman, Karen Frank, Lester Fullbright, Sue Fullbright, Mark Klinger, Melinda Klinger, Marlin Liles, Barbara May, Lucy McLeod, Lynn McLeod, Monique Michaud, Anita Paraday, Kirk Paraday, Rick Paraday, Sue Paraday, Barbara Sjaastad, Caroline Vulgamore, Harry Vulgamore and Richard Waltman.

Hats off to the committee for their hard work in researching and coordinating. They dubbed this trip, "Ranches, Foundries, Peaks and Science." We wonder what insights future journeys will bring.





THE WOMAN'S EDUCATIONAL SOCIETY
of THE COLORADO COLLEGE

MEMBERSHIP FORM

WES membership is open to all. Please select one of the following membership categories and make your check payable to WES. All contributions to WES are for scholarships, programs, and projects which benefit students of Colorado College and are tax deductible. **Payments and contributions for 2013 are due now.**

- Annual Dues \$25
- Magna Cum Laude \$100-\$499
- Baccalaureate \$26-\$49
- Summa Cum Laude \$500 and above
- Cum Laude \$50-\$99
- Life, Silver Special, Ex-officio, Honorary

- New Member
- Renewal
- Scholarship Fund
- I'd like for someone to call me about volunteering for WES

Name _____ Amount Enclosed \$ _____

Address _____

Phone _____ E-Mail _____

Send to:

The Woman's Educational Society of The Colorado College
14 East Cache La Poudre Street, Colorado Springs, CO 80903

YOU CAN MAKE A DIFFERENCE

Would you like to become more involved with WES? Whether you are part of Colorado College or from the Colorado Springs community at large, we invite you to join the WES Board and become involved with our activities which benefit outstanding students.

We meet the first Thursday of the month except January, July, and August. You may choose from a variety of committees: Finance, Fundraising, Membership, Nominating, Program, Publicity or Scholarship. Board members are also mentors to the WES scholars. Another way to participate is by serving as a Member-at-Large on one of our committees.

You **CAN** make a difference in a student's life. If you would like to join our efforts or have questions, please leave a message for us at (719) 389-7699 or at WES@ColoradoCollege.edu.



COLORADO COLLEGE
THE WOMAN'S EDUCATIONAL SOCIETY
of COLORADO COLLEGE

14 East Cache La Poudre Street
Colorado Springs, CO 80903

NON-PROFIT ORG
U.S. POSTAGE
PAID
PERMIT #745
COLO SPRGS, CO

Fall 2013

