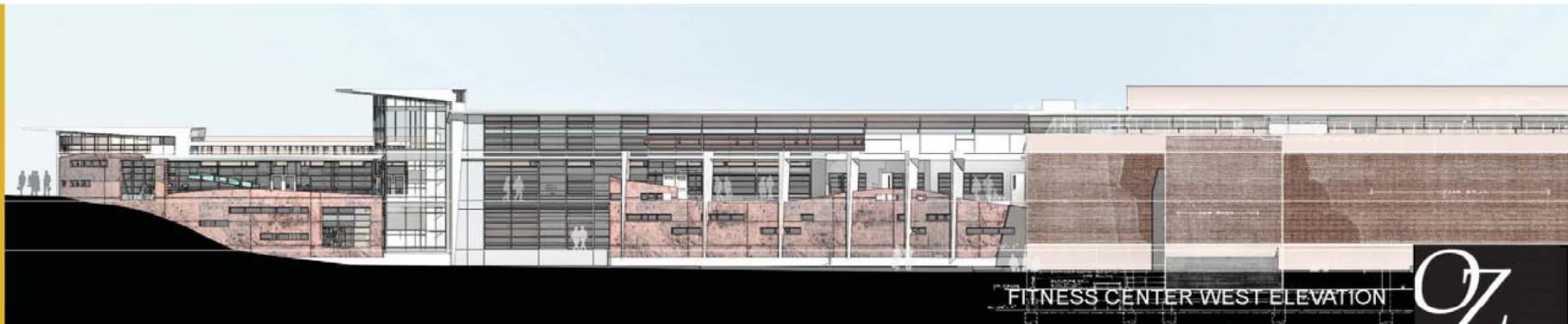


# EL POMAR SPORTS COMPLEX 2011

>.the  
fitness  
center.<



1 ...the fitness center design incorporates important elements of the Colorado College Long Range Development Plan by turning the building to the West and respecting existing view corridors...



OZ

## >.table of contents.<



...the individual parts  
comprising the core of  
El Pomar...



### >.the renovation.<

...renovation of El Pomar meets  
all requirements of Department of  
Justice mandated ADA upgrades  
while providing necessary  
classroom and office space.  
Pages 17-24

### >.the fitness center.<

...29,000 SF of new construction houses  
cardio conditioning room, strength area, full  
sized court, yoga studio and locker rooms for  
students, faculty and staff.  
Pages 3-11

### >.the gateway.<

...11,000 sf of new construction provides a  
vibrant new southwest gateway to campus  
while providing necessary classroom and  
office space.  
Pages 12-16



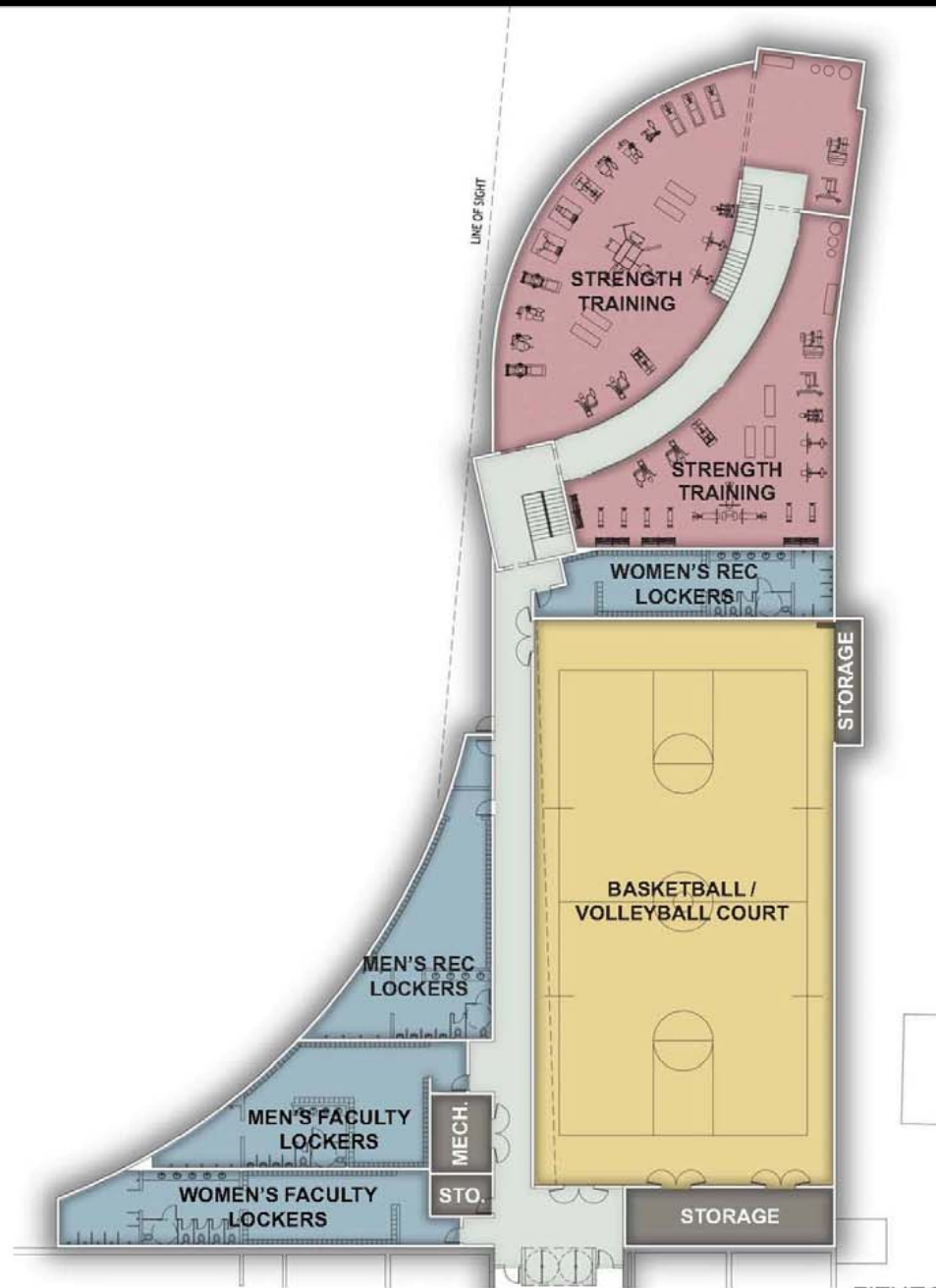
>.the  
fitness  
center.<



>.the  
fitness  
center.<



...new fitness addition  
provides cardio  
area, strength and  
conditioning, court  
space, and locker  
rooms...

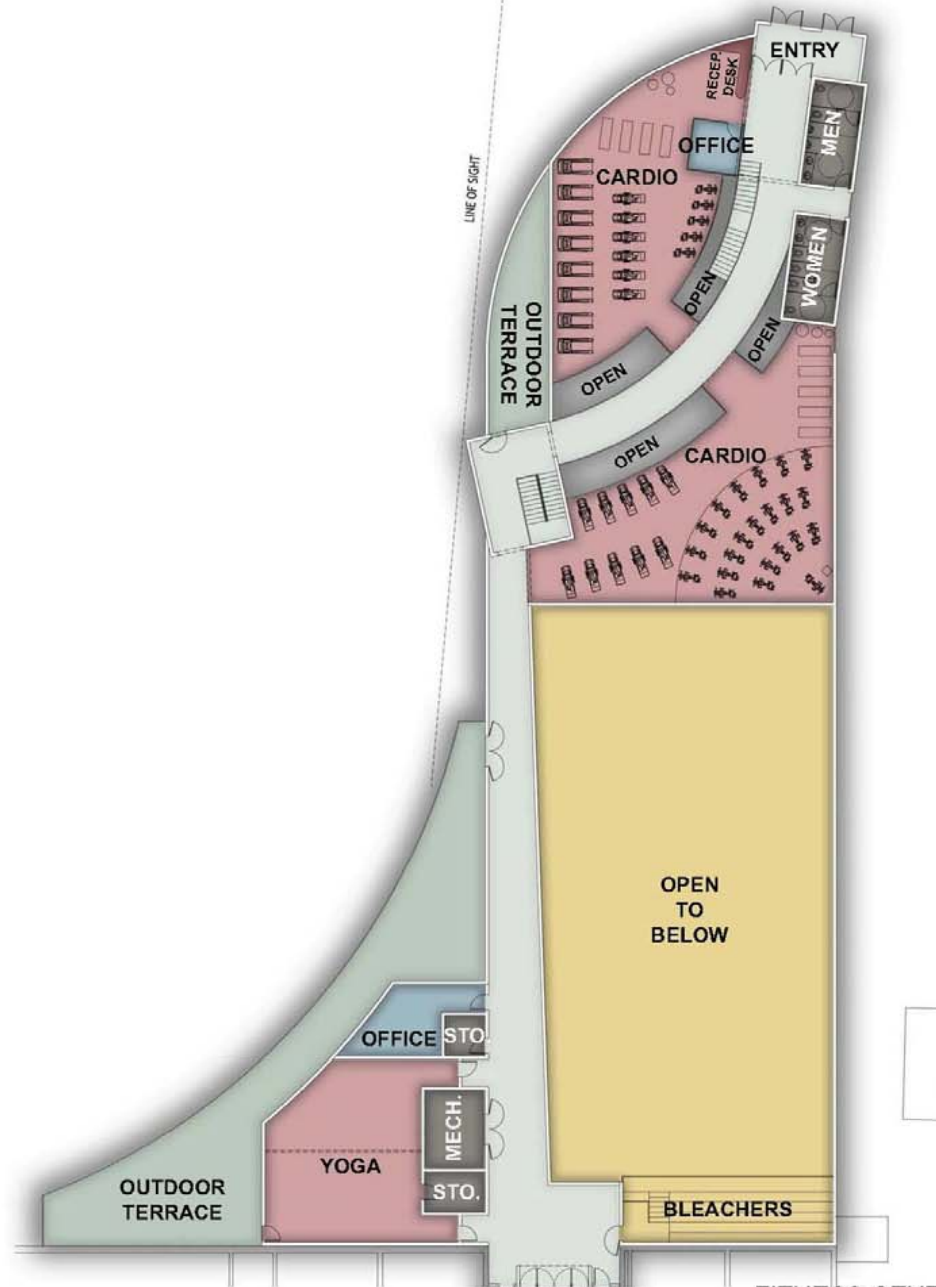


FITNESS CENTER FIRST FLOOR PLAN

>.the  
fitness  
center.<



...newly created area  
for Yoga/aerobics  
and structured fitness  
opportunities...



FITNESS CENTER SECOND FLOOR PLAN



>.the  
fitness  
center.<



>.the  
fitness  
center.<



...strategically placed  
openings capitalize on  
breathtaking western  
views and allow natural  
daylighting to penetrate  
visually connected  
workout areas...





>.the  
fitness  
center.<



...inviting entry allows  
visual connection to the  
front range and access  
control points...







>.the  
fitness  
center.<



...covered outdoor  
terraces create unique  
casual gathering  
spaces as well as a  
prime viewing point  
of Washburn Field  
activities...





>.the  
fitness  
center.<



...elevated hallway  
provides views into  
newly created court  
space...





>.the  
fitness  
center.<



...regulation size  
gym floor expands  
recreational  
opportunities for  
students and faculty...





>.the  
fitness  
center.<



...creating a sense  
of place for Colorado  
College Community  
members...





>.the  
gateway.<



...visitors to campus  
experience a dynamic  
southwest Gateway to  
Colorado College and  
a newly created sense  
of place via the new  
office addition's strong  
architectural character  
and identity...





>.the  
gateway.<



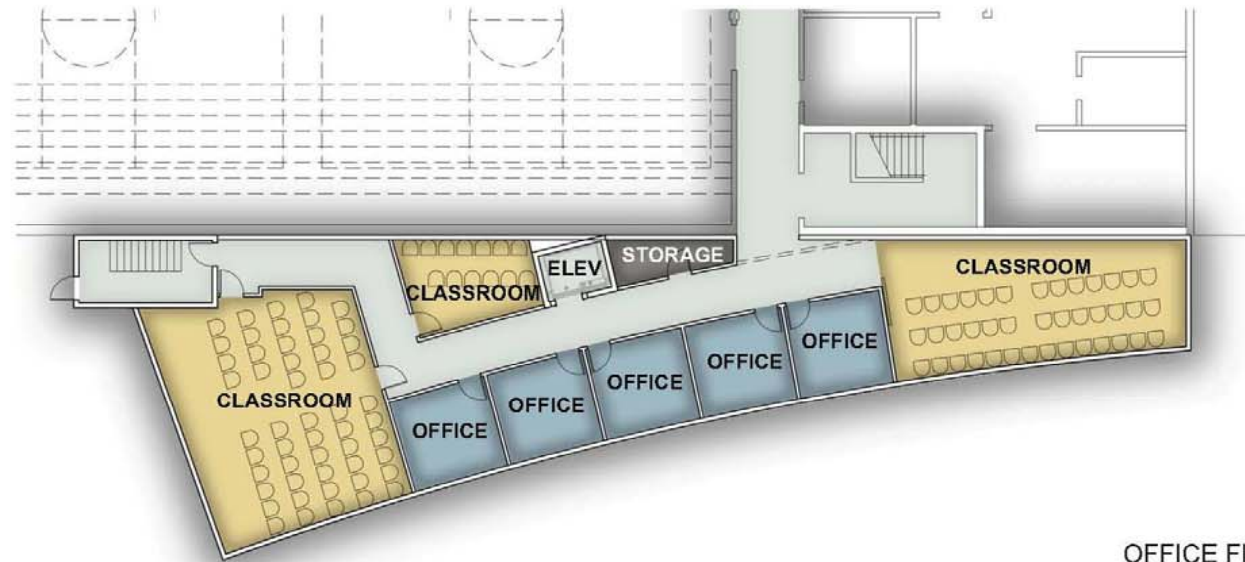
...Colorado College  
community inspired  
by heightened entry  
experience, accessible  
to all...



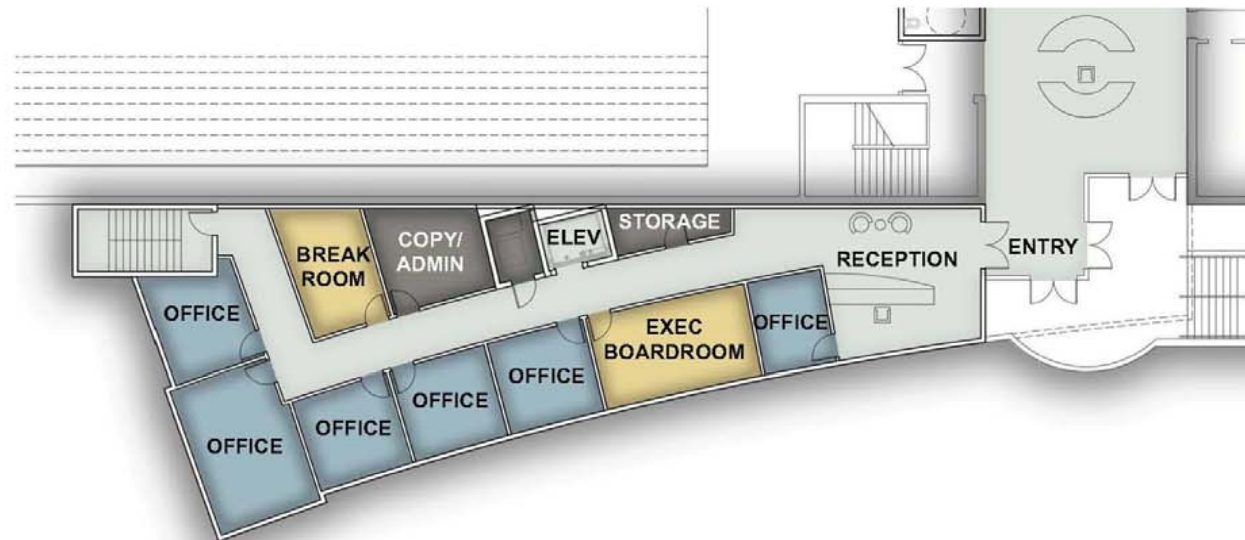
>.the  
gateway.<



...efficiency is created  
by concentrating staff  
functions with adjacent  
classrooms...



OFFICE FIRST FLOOR PLAN



OFFICE SECOND FLOOR PLAN

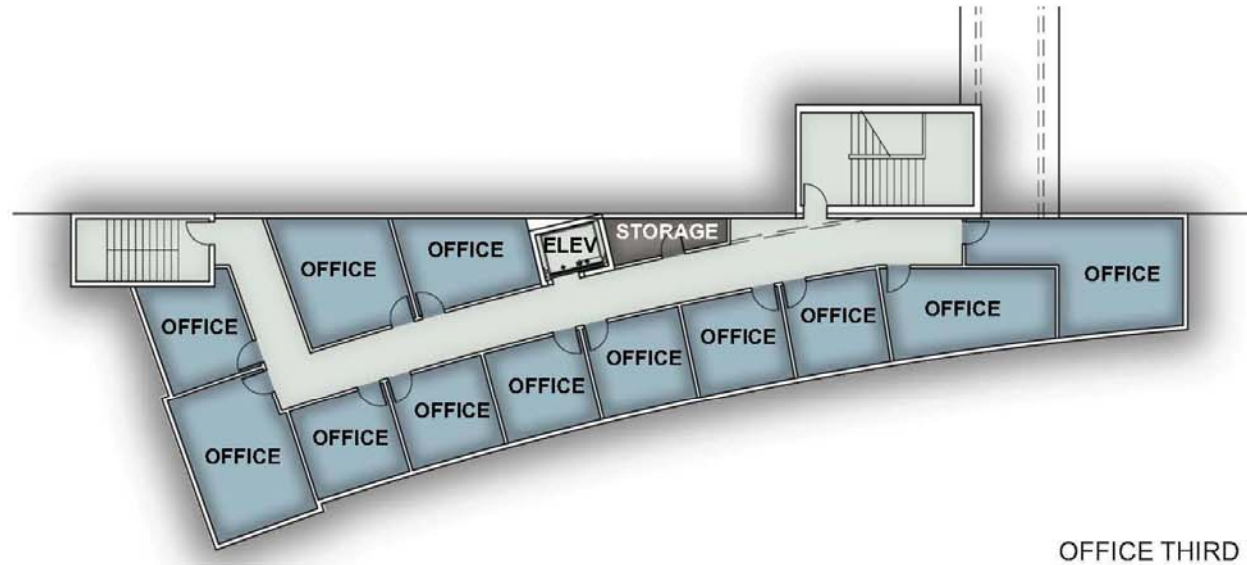


>.the  
gateway.<



...building forms and  
natural materials mimic  
the dynamics of the  
site. Daylight, views  
and natural ventilation  
are maximized to  
create a healthy  
working and learning  
environment...

17



OFFICE THIRD FLOOR PLAN



OFFICE SOUTH ELEVATION



>.the  
gateway.<



...dynamic forms and  
strong Architectural  
features aide in  
establishing a  
memorable yet singular  
identity for El Pomar...





>.the  
renovation.<



...welcoming  
loungue space  
created for students  
supplementing use of  
current display area...





>.the  
renovation.<





>.the  
renovation.<



...Sport Court flooring  
in the auxiliary gym  
provides a cleaner,  
safer environment for  
users...

COLORADO  
COLLEGE





>.the  
renovation.<

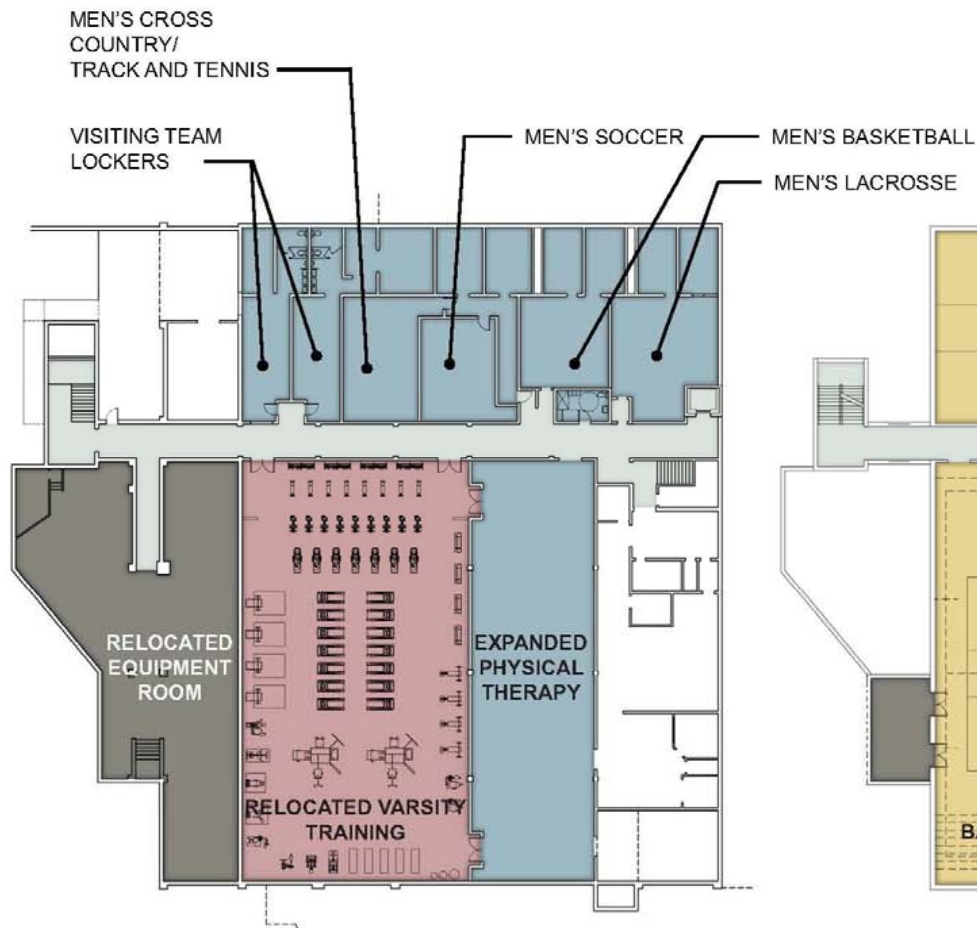


...Turf Room improved  
to bring intercollegiate  
strength, cardio and  
physical therapy  
functions together in  
beneficially adjacent  
and better supervised  
areas...

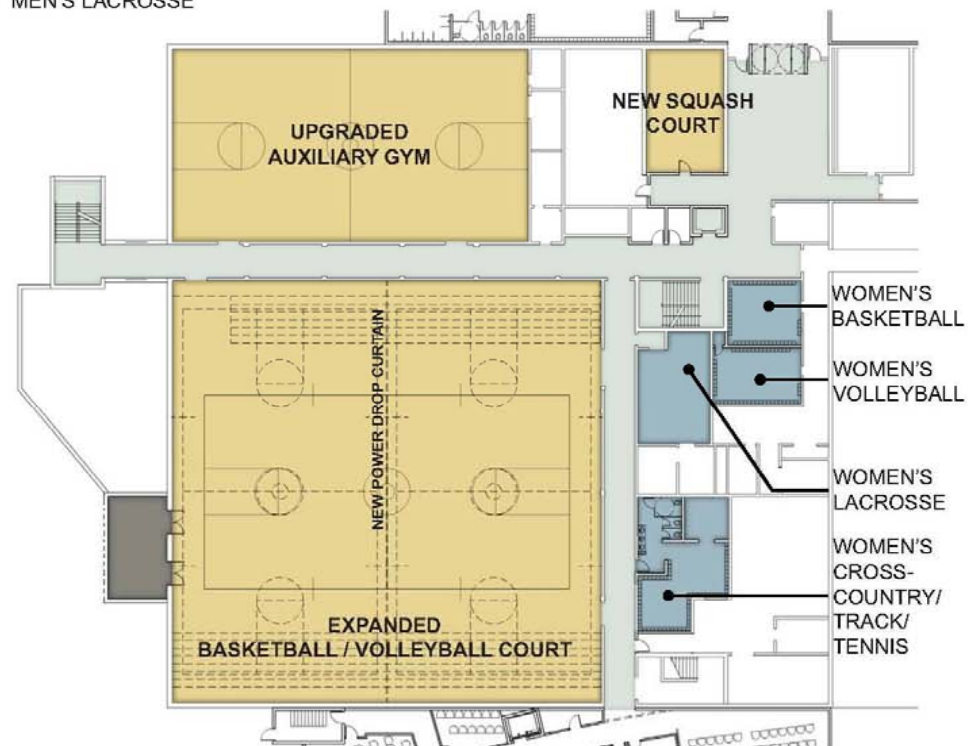




>.the  
renovation.<



EXISTING EL POMAR BASEMENT FLOOR PLAN

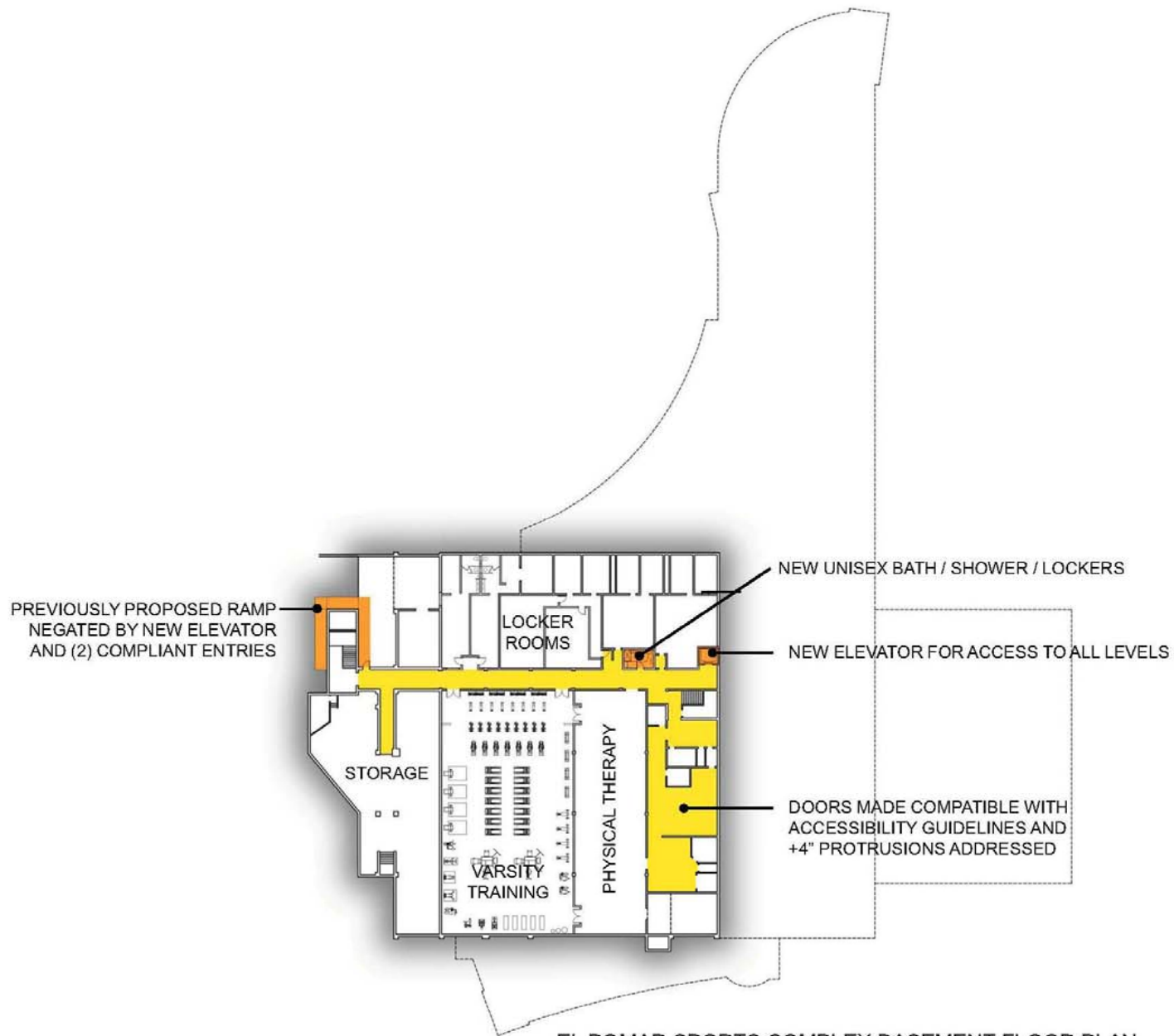


EXISTING EL POMAR FIRST FLOOR PLAN

>.the  
renovation.<



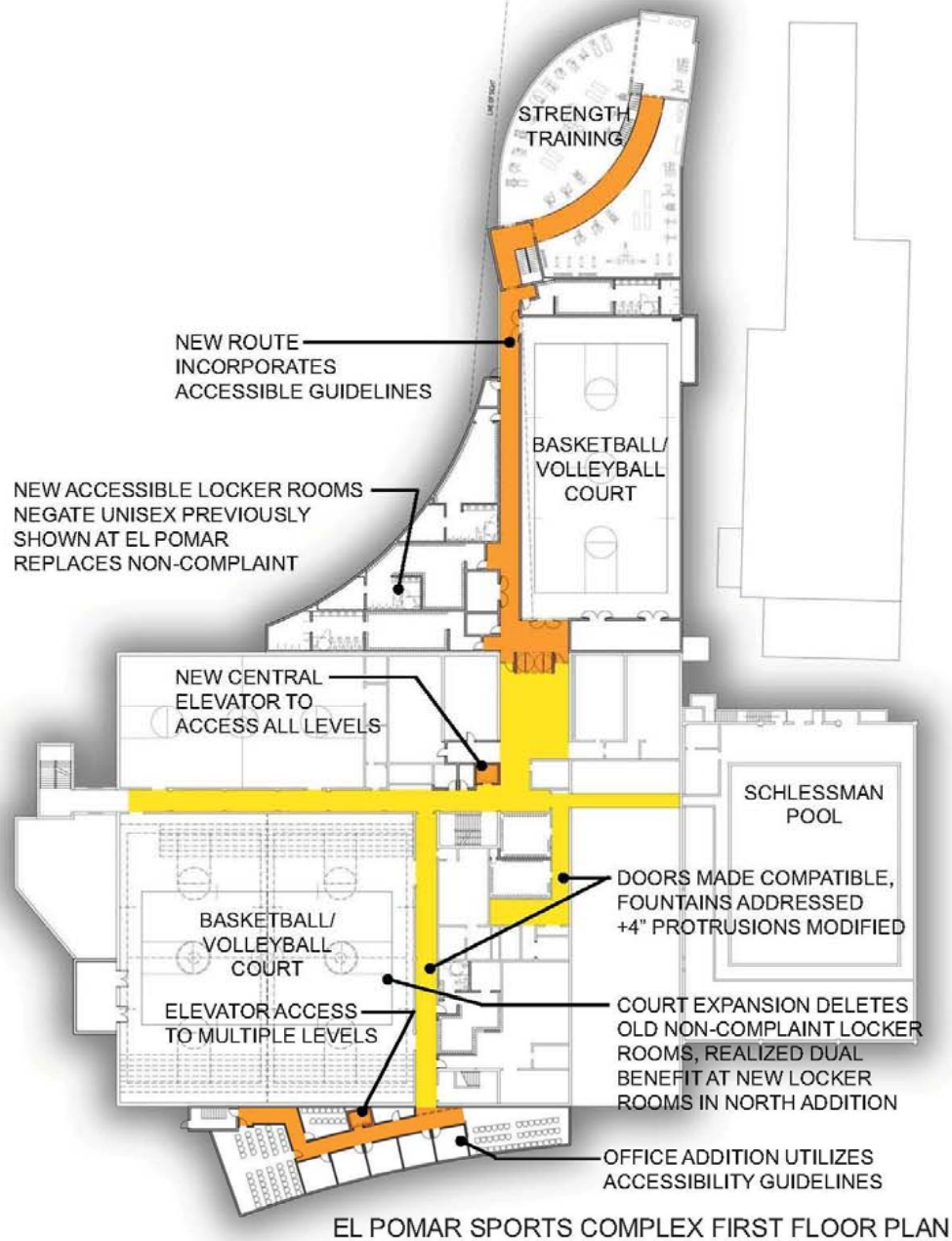
...accessibility  
compliance achieved  
via office and fitness  
addition components  
and selective interior  
improvements...



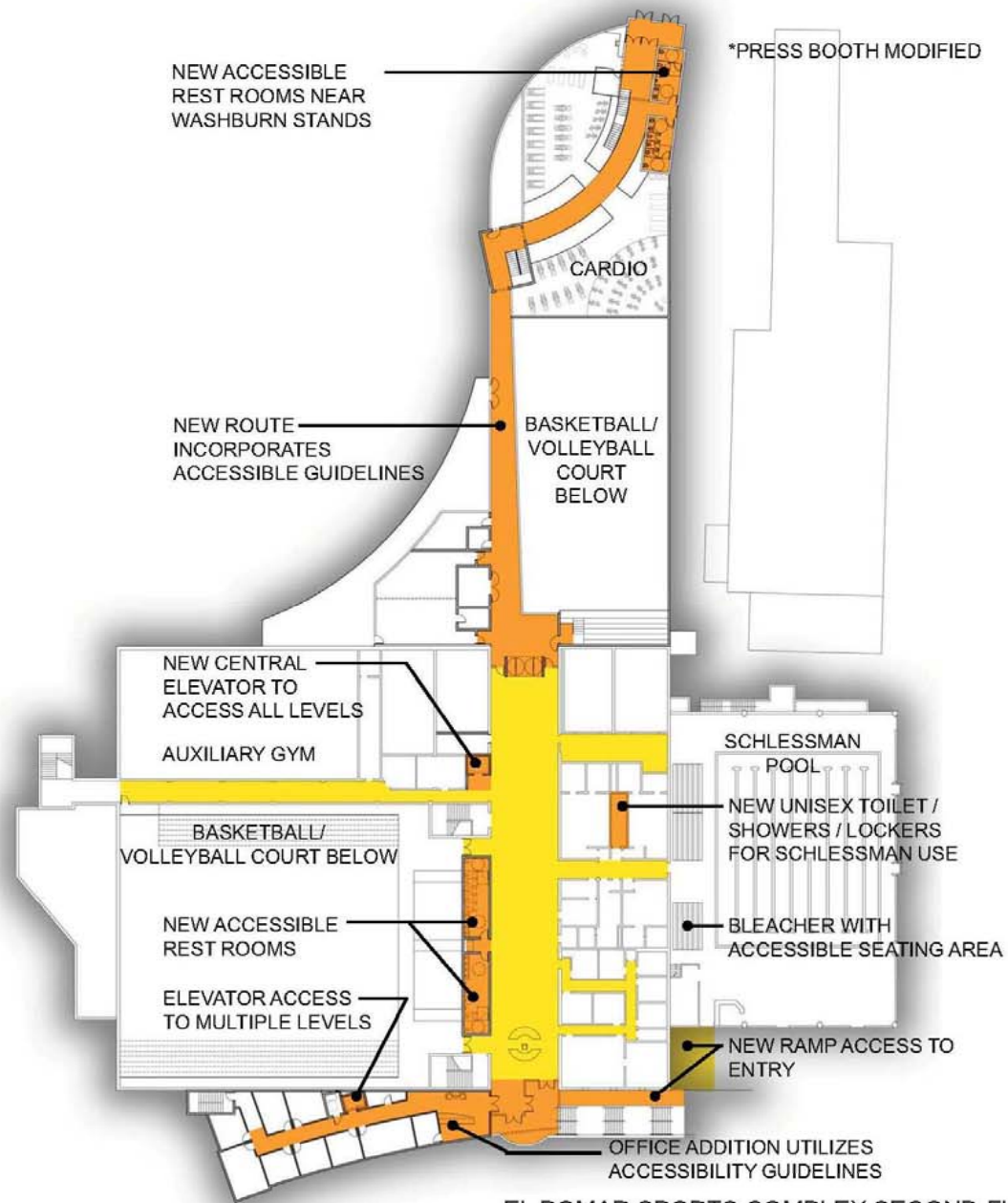
EL POMAR SPORTS COMPLEX BASEMENT FLOOR PLAN



>.the  
renovation.<



>.the  
renovation.<



EL POMAR SPORTS COMPLEX SECOND FLOOR PLAN



>.the  
renovation.<



...creating a sense  
of place for Colorado  
College Community  
members...





OZ ARCHITECTURE  
508 SOUTH TEJON STREET  
COLORADO SPRINGS, CO 80903

PHONE: 719.219.1540  
FAX: 719.219.1549  
[WWW.OZARCH.COM](http://WWW.OZARCH.COM)