



THE WOMAN'S EDUCATIONAL SOCIETY
of COLORADO COLLEGE

Newsfocus

WINTER 2011

FOUNDED IN 1889 TO GIVE ASSISTANCE TO THE STUDENTS OF COLORADO COLLEGE



I really enjoy the sense of community that comes with being a WES scholar. It's great to have the opportunity to be among so many intelligent and driven women. — Emily Conway

WES has given me incredible support systems of both energetic and dedicated women as well as hard-working and helpful peers. — Tsipora Prochovnick

THE WOMAN'S EDUCATIONAL SOCIETY (WES) is an autonomous community organization founded on April 20, 1889, to foster support of Colorado College. Its purposes are to bring community and college together, give assistance to students of the college, and undertake programs and projects to benefit the college, particularly women of the college. Gifts to WES are tax-deductible. Newsfocus is published twice a year as a service to members and friends of WES.

BOARD OF MANAGERS

Carrie Allen, Diane Benninghoff, Linda Boyles, Elaine Cacatian, Lana Coffman, Marge Colgan, Sue Dilloway, Penny Dokken, B Fox, Kalah Fuller, Rhonda Heschel, Spot Holmes, Heidi Lewis, Catherine Lewis, Pam Marsh, Sally Metzger, Barbara Mitchell, Sylvia Nolte, Connie Patterson, Gerri Anne Reed, Sharon Rice, Candace Santa-Maria, Marlene Smith, Jeanne Stiles, Caroline Vulgamore, Cathy Wilson-O'Donnell, Shirley Woolley, Beth Zautke

WES OFFICERS

Co-Presidents: Sally Metzger, Jeanne Stiles
First Vice President: Caroline Vulgamore
Second Vice President: Sue Dilloway
Recording Secretary: Sylvia Nolte
Corresponding Secretary: Marlene Smith
Treasurer: Linda Boyles, Barbara Mitchell
Assistant Treasurer: Cathy Wilson-O'Donnell

COMMITTEE CHAIRS

Executive: Sally Metzger, Jeanne Stiles
Finance: Linda Boyles, Cathy Wilson-O'Donnell
Fundraising/Projects: Elaine Cacatian, Cathy Lewis
Membership: Shirley Woolley
Nominating: Marge Colgan, B Fox
Program: Sue Dilloway
Publicity: Rhonda Heschel, Carrie Allen
Scholarship: B Fox

WES WEBSITE

Visit our WES page on the Colorado College website at: www.coloradocollege.edu/wes to see pictures of recent activities, read Newsfocus issues and learn about upcoming events.

WES ONLINE

WES is now able to receive and respond to email at wes@coloradocollege.edu. In the interest of sustainability, we are researching using email and online sources for future newsletters and event invitations. Money saved on printing and postage would directly benefit the Scholarship Fund. We would love to get email feedback from our members on this proposed change.

A MESSAGE FROM THE CO-PRESIDENTS

A very Happy New Year to all of you! 2011 promises to be another busy and satisfying year for our scholars, Board of Managers and WES members and friends.

WES FUND-RAISING continues to be successful. Besides the money collected from the Van Briggles and Southwest tours, we have received many donations for Van Briggles note cards, tour booklets and artwork. And to compliment the note cards, we've added Van Briggles bookmarks which made their debut at the CC Craft Fair in early December.

As we continue to experiment with communication to our membership on the **WES WEBSITE**, we look forward to hearing from those of you who are able to read this newsletter online and receive current news about upcoming events. We are working diligently to update our membership list with accurate information about levels of giving. Please note that we have included Dr. Stoller's tour participants below the membership list this spring as a way to acknowledge their financial support.

We encourage all of you to circle **FEBRUARY 17** on your calendars for our Farewell Luncheon for President Richard Celeste and Jacqueline Lundquist at the Stewart House. We are hoping for a large turnout for this very special event. Details about this program as well as other spring events will be highlighted later in this newsletter.

It's hard to believe that our terms of office are almost completed. As we look back over the nearly two years since we were elected, we are amazed at the variety of wonderful activities our Board has undertaken to help bring us all closer together. We've added several new Board members; we've entertained our scholars at teas, mixers, a friendly debate, chili dinners, game nights and picnics; we've sponsored successful tours through the Southwest and the Van Briggles Pottery Building that have brought additional money to our scholarship fund; we've been the grateful recipients of several bequests that will benefit our scholars for years to come; and we've made new friends and greeted old ones at our social gatherings. We feel fortunate to have been able to assist this remarkable group and look forward to the remaining few months!

-- Sally Metzger and Jeanne Stiles

CALENDAR OF EVENTS

FAREWELL LUNCHEON

WES will honor outgoing CC President Richard Celeste and his wife Jacqueline Lundquist, longtime WES supporter. The luncheon will be held at Stewart House on February 17 at noon and will feature a reading by Colorado poet laureate David Mason. The cost is \$30 and includes a donation towards a gift to the College in the President's honor. Further donations towards a WES gift to the College can be made at the event. Reservations for this event are required and must be received by February 11, 2011; please use the invitation printed on the back cover of this Newsfocus issue to reserve your seat. Questions regarding this event should be directed to either Elaine Cacatian at 573-9861 or Sue Dilloway at 538-7647.

WOMEN OF THE WEST LUNCHEON

The Aficionados' annual Women of the West luncheon will be held on March 9, 2011. This year's theme is Energy Efficiency and Renewable Energy in the American Southwest. The keynote speaker is Dr. Sally Meyer, Director of The Hulbert Center for Southwest Studies and Professor of

Chemistry and Environmental Science. She will be joined by Amanda Wierzba, Class of 2010 Chemistry major, who will speak about her nonprofit organization "Home Energy Audits and Retrofits". Tiffany Calabaza, currently an Environmental Chemistry major, will talk about the use of photovoltaic systems to produce electricity in rural areas. Invitations for this event will be mailed directly to WES members.

WES ANNUAL MEETING

Details for the WES Annual Meeting will be mailed and posted on our website as they become available. The Annual Meeting is an opportunity to honor graduating scholars and participate in the WES business meeting. So that members may review the newly amended Constitution before the Annual Meeting, it is now available online at <http://www.coloradocollege.edu/wes/constitution.asp>.

2011 VAN BRIGGLE TOUR

The next Van Briggles Building Tour will be held on September 17, 2011. All proceeds directly benefit the WES Scholarship Fund. The WES website will have details closer to the date.

WHAT'S WES BEEN UP TO?



WES Board members and scholars enjoyed the chili and cornbread at the annual Chili Supper in October. The dinner took place at historic 1210 Wood Avenue, decorated for the fall season.



A new event for WES, the Scholars' Mixer, was held in September to meet the new scholars and reconnect with the upper classmen. Dr. Tomi-Ann Roberts, Professor of Psychology at CC, gave a very enjoyable talk on the healthful benefits of laughter, which included lots of practice for the attendees!



Dr. Robert Loevy, Professor of Political Science at CC, and Dr. Bill Hochman, Professor Emeritus of History, hosted an informative debate before the November 2010 mid-term election.



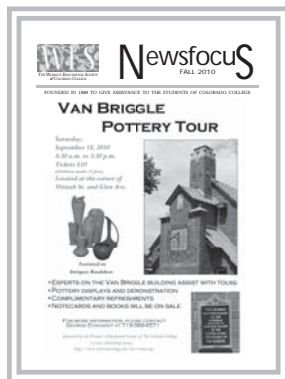
The annual VanBriggle tour in September was extremely successful; held on a beautiful fall day with assistance from many dedicated volunteers. All proceeds from donations and tickets went directly into the Scholarship Fund.

WES APPRECIATES...

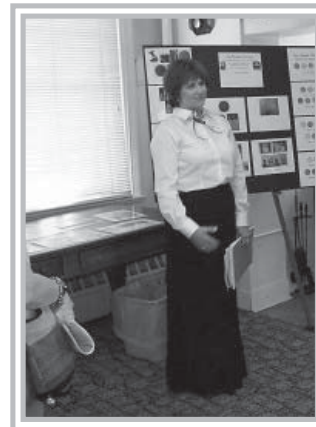
... **Dottie Rue and Stacy Lutz Davidson**, our CC financial liaisons. These women review and analyze WES investments and project spending for scholarships. They are always there to answer questions and assist the Finance Committee.

... **Dr. Marianne Stoller** for her continued support of our scholarships through donations from her WES trips and for providing fascinating experiences for the trip participants.

... **Linda Crissey**, former Board member, for developing The Van Briggles Note Card Collection. Linda recently added six new images and three bookmarks. Proceeds from the note cards and bookmarks directly benefit the scholarship fund.



... The Newsfocus staff would like to thank CC alumnus and graphic designer **Kirsten Harlow**, printer **Carl Olson, Karen To** and **The Mail Room staff** for their skills and expertise in creating and distributing each issue of the Newsfocus.



Linda Crissey

RECOGNITION FOR AN ACCOMPLISHED WRITER

For ten years Jessy Randall, Curator of Special Collections at Colorado College, has assisted WES with our archived files, organizing everything from our legal documents to programs to correspondence. But did you know that Jessy, the mother of two small children, is also an accomplished, published author? Her poems and humor pieces have appeared in Asimov's, McSweeney's, The Magazine of Speculative Poetry and Star Line.

Her young adult novel, *The Wandora Unit* (Ghost Road Press, 2009) is about love and friendship in the high school poetry crowd. She has a collection of collaborative poems, *Interruptions*, forthcoming from Pecan Grove and a solo collection, *Injecting Dreams into Cows*, forthcoming from Red Hen. Jessy's poetry readings demonstrate a clever way with words and sensitivity to teens and young adults.

WELCOME TO THE NEW BOARD MEMBERS

HEIDI LEWIS graduated from Robert Morris University with a BA in English Studies and earned an MA in English Literature at Ohio University. After graduating, she taught English at Ohio University and Ohio Dominican University. She began the Ph.D. program in American Studies at Purdue University in the fall of 2006. She specializes in the area of 20th Century American Literature, African American Studies, and Women's Studies, particularly black feminist thought. While pursuing her Ph.D., Heidi taught for the Women's Studies Program and the African American Studies and Research Center at Purdue. She also taught composition courses at the local community college, as well as a year-long seminar focused on hip-hop for the Purdue Black Cultural Center's Black Thought Collective. For two years, she conducted an after-school program for young black women at the local high school. Heidi currently is serving as the Riley Scholar-in-Residence for Feminist and Gender Studies at Colorado College, where she teaches Introduction to Feminist and Gender Studies, African American Feminist Thought and a course focused on gender and sexuality in hip-hop culture. She and her husband, Antonio, have two young children.



Cathy Lewis and Jeanne Stiles take donations for Linda Crissey's note cards at the 2010 Van Briggles Tour

LANA COFFMAN is a proud 1968 graduate of Colorado College, which she attended on a Boettcher Scholarship. She earned masters degrees from UCLA in both Chemistry and Business Administration. After spending many years working in the oil and gas industry, she started a second career as a middle-school science teacher. In teaching, she found a wonderful - and challenging - outlet where she could combine her passion for learning with her love of children. Lana enjoys many outdoor activities; whether hiking, walking her dog, or sitting by a stream, the peace and joy she gets from simply being outside is priceless. She enjoys singing in the Colorado Springs Chorale and attending many of the fine musical performances in our city. Now retired, she continues to work part-time in public education, taking time off to travel, relax with family and friends, grow spiritually, and most importantly, play with her five grandchildren.

MID-YEAR NEWS FROM THE WES SCHOLARS

AN ADVENTURE TO REMEMBER

Senior WES scholar **ELIZA SCALLY** and her roommate wanted to climb Pikes Peak before leaving CC, but last fall they realized it was “now or never.” After packing two sandwiches and layering warm clothing (and later sharing the warm gloves) at 12:30 a.m., October 27th, they climbed the Manitou Incline under a full moon, reaching the top in two hours with a sweeping view of the lights below. Plodding onward, they reached Barr Camp at 5:00 a.m. with snow on the ground and the stream frozen. They made it past tree line at 7:00 a.m., and captured photos of the sunrise. The rest of the climb, they struggled with “deep snow drifts and freezing gusts being funneled down from the top of Pikes Peak”. When they reached the summit, it was 11:30 a.m. A formidable feat in summer, hiking the Peak in late October is daring—they never met another human on their trek. Eliza says, “We have no pictures at the top of the mountain because of all the cloud cover and mist and it was almost impossible to see.” With the poor visibility, the cog train had left and the manager was closing the Summit House, but they were able to ride down with a ranger. Now when she looks at Pikes Peak on the horizon, “it’s a different feeling, because I know I’ve been to the top”.



Eliza Scally hiking Pikes Peak on October 27th, 2010.

Junior **EMILY CONWAY** came to CC wanting to be on a pre-med track to become a pediatrician, but has changed her mind. She is now majoring in Economics and Anthropology and wishes to pursue a career in the non-profit sector. One of the most exciting things to happen to Emily this year was an internship at the National Conference of State Legislatures. One of her assignments was to write a “LegisBrief” on how state legislatures can help working-class families build assets. Recently she was notified that her LegisBrief will be published in early 2011. This summer Emily hopes to do a collaborative research project with the chair of the Anthropology Department or find an internship in the Colorado Springs/Denver area. Emily continues to sing and enjoy music in her free time. *I feel like I have really come to embrace and enjoy the manner in which my life is always changing. I think my time at CC has taught me to take chances, embrace new adventures, and never let an opportunity pass me by. I think that WES has been wonderfully supportive, I couldn’t ask for anything more. I really enjoy the sense of community that comes with being a WES scholar. It’s great to have the opportunity to be among so many intelligent and driven women.*

Junior **ANN EVANKOW** is a Biology major who loves to cook vegetarian cuisine, was on the Dean’s List in 2010 and has many extracurricular activities. This past fall she led a backpacking trip for New Student Orientation and presently she is a member of the FemCo, the Chess Club, the Glass House, Oxfam and the CC Roundtable. She is also involved with Invisible Children, Break Out, Alternative

Spring Break and the Rocky Mountain Field Institute. This summer she would like to visit a friend’s home in Bulgaria. Ann is a naturalist and wishes to share her enthusiasm for nature with younger generations as a future career path. *I have challenged myself academically, socially and physically and continue to be rewarded for my hard work. I have also begun to feel a stronger connection to my community: the community of CC, Colorado Springs, Colorado, the U.S. and the World. I am very impressed by my peers. The students at CC work hard and play hard. All in all we are spirited. We are ambitious and we act. I am often inspired by the commitment and passion of my fellow students, which gives me confidence in my own ability to reach out and achieve my dreams. WES has helped me. The WES has been with me since my first week at CC. Everyone is welcoming, friendly and the best cure for a stressed-out college girl.*

Junior **THERESA GALLI** is an Economics major on the Dean’s List. Her career goals have changed slightly since she came to CC; she is now interested in food and sustainable agriculture. She is the manager of the Sacred Grounds Coffee House (a fair-trade, sustainable, student-run space on campus), and Co-chair of the Refugees Assistance Program. Theresa also has a passion for cooking. Her summer hopes are to go on a canoeing trip in Canada and to work on an organic farm in Italy to study the slow food movement. *My experience has been immensely enriched by this scholarship! I have had so much time to focus on my studies and other interests without having to worry about finances. I also had the opportunity to take a Wilderness First Responder course*

MID-YEAR NEWS FROM THE WES SCHOLARS

with the help of special funding from WES. This course was a wonderful addition to my college education and has allowed me to lead backpacking trips for incoming freshman which has been very enriching for my college experience.

Senior **LAUREN HINKLE** is a Computer Science and Physics major and is applying for PhD programs in computer science with emphasis on Artificial Intelligence and Machine Learning. In December she presented at a conference in China. Outside of her passion for academics, she loves running, which she does nearly every day. She ran two half-marathons this past year and hopes to run one in the spring. In great physical shape, this past summer she climbed Pike's Peak up and down, all 26 miles. *Receiving a WES scholarship was a surprise and an incredible gift my freshman year. The scholarship aid was so important for my family. Additionally, there aren't words to describe how much my time at CC has been enriched by knowing that there is a network of incredible women who want to help support me. I have loved all of the WES events and have always made an effort to attend them. Especially as someone who came to college not knowing anyone in the state, it means so much to see a room full of people with smiles on their faces who care about me and genuinely want me to succeed. The members of WES and their support have gone a long way to making CC feel like home. Thank you so much.*

Junior **EMILY MOORE** expresses her deep respect for the Sociology Department faculty; their passion for teaching inspired her to major in Sociology. Emily volunteers in many capacities and ventures. She is Co-Chair of AppreCCiate and Sustained Dialogue, a CC Student Government Representative and the Survivorship Co-Chair for Relay for Life. She is also the Chair of BreakOut, was a learning assistant for Sociological Research Design and a New Student Orientation leader. She was inducted into the National Blue Key Honors Society and will soon be inducted into Alpha Kappa Delta (Sociology Honors Society). In response to our question about how she has grown since beginning at CC, she answered *"I have learned that it is okay to take risks and fail, as long as I pick myself back up again. While I always strive for self-improvement, I've also grown to appreciate the person God has made me and have embraced my idiosyncrasies."* Looking forward to law

school, Emily will become an attorney specializing in child advocacy. Presently she is teaching preschoolers ballet and tap on Saturday mornings. *The WES scholarship made it possible for me to attend Colorado College. I particularly appreciate not having to worry about additional expenses for books and school supplies; I also really enjoy getting to know members of the WES board and the programming activities.*

Sophomore **TSIPORA PROCHOVNICK**, a high-spirited, free-thinking young lady, loves to create. She has not declared her major as yet; however, if she follows her heart, it will most likely be Art Studio. She credits her ceramics teacher, Greg, as the person most influential in her CC life. She admires that he does what he loves as his career. This summer Tsipora intends to work as a raft guide in California.



Chili Supper

Next year she plans on studying abroad in Florence and would like to remain in Europe for the second semester. *My WES scholarship has done a number of things. First of all, the money has relieved a lot of stress, especially the stress of paying off loans (now I can graduate debt-free). This is part of the reason that I am not worried about future jobs. WES has also given me incredible support systems of both energetic and dedicated women as well as hard working and helpful peers. This has given me people to fall back on when I most need them.*

Sophomore **CHRISTA CARROLL** is presently pursuing a path to complete the courses for her thematic minor in "The Book", which focuses on the study of books as objects rather than for their content. She is researching programs that would allow her to study the process of making medieval manuscripts. She is considering applying for a summer class in medieval pigments.

In October, two scholars played key roles in the rousing comedy "Rhinoceros", performed in the Cornerstone South Theatre. Our talented first-year scholar **PENUEL BICKLEY** played two uproariously entertaining roles. **PIGEON BURDI**, a very creative scholar, contributed to the elaborate costume designs. Those of us who attended one of the three performances were so very proud and touched by the talent of these young ladies.

WES SOUTHWEST TRIP, FALL 2010

“FROM ATOMS TO THE COSMOS”, AN OUT OF THIS WORLD EXPERIENCE



Marianne Stoller, Professor Emeritus of Anthropology at Colorado College, specializes in the American Southwest. She uses her expertise to lead educational trips, exploring the geography and history of specific regions of North America. She graciously donates a portion of each trip fee directly to WES scholarships. Thank you to Shirley Woolley for the following article and to Linda Crissey for the accompanying photos. Dr. Stoller would like to specially acknowledge Sharon Rice's efforts in organizing this and previous trips.

When reporting about other WES trips, our superlatives are usually applied to the wonderful scenery. Even though the fall drive through New Mexico was lovely, we were most impressed by the incredible preparations made by Dr. Henry Gertzman. At the onset, each participant received a bound hand-out consisting of information that would provide the foundation for our learning about “Atoms and the Cosmos.” This was accompanied by numerous DVDs and oral presentations. Our fellow travelers Dr. Duncan Burdick, Dr. Bill Kane, Dr. Bob Stovac and Dr. Mike Crissey all added insights along the way.

From the beginning, it was clear this was no ordinary trip. Our first destination was the Los Alamos Neutron Science Center (LANSCE). We were treated to an unprecedented private tour of the facility including the Lujan neutron scattering instruments used for nuclear physics research. We then visited the Bradbury Science Museum and enjoyed a walking tour of Los Alamos.

On day two, we visited the outstanding New Mexico Museum of Natural History and the Natural Museum of Nuclear Science and History. One of the highlights of the trip was our visit to the Trinity Site. Once again, a special private tour was prearranged at this location where the first successful nuclear bomb was tested on July 16, 1945.

At Alamogordo we toured the New Mexico Museum of Space History and later drove up Sacramento Peak. There we were able to see telescopes at Apache Point Observatory and Sunspot National Solar Observatory.

Even though this was to be an “out of this world” experience, Henry could not be persuaded by Dr. Sharon Rice and Dr. Marianne Stoller to make a stop in Roswell. Our closest extraterrestrial experience had to be downing a glass of “Alien Ale” in Truth or Consequences, New Mexico.

Throughout the excursion, Sharon took care of our important dietary and lodging needs. Our group dinners were festive and most enjoyable. Although we were unable to stop at the “Home of the World’s Largest Pistachio,” a short detour later accommodated the shopping nuts or shopping for nuts.

The trip to beautiful White Sands National Monument led to dune climbing adventures. While there Marilyn, our bus driver, educated the group as to how automatic tire chains are implemented. The curator at the White Sands Museum spoke about their V-2 rockets and led us on a guided stroll through the adjoining missile park. With perfect timing, we arrived at the Very Large Array Open House. The VLA consists of 27 (82-foot) antennas that are connected together to form a single large radio telescope.

We were extremely fortunate that Marianne Stoller could accompany us on this adventure. She shared her vast knowledge of petroglyph sites and native cultures and prepared us for the El Camino Real International Heritage Center. On the final day, we enjoyed a rare “down to earth” treat. The group agreed to make an unscheduled stop at the New Mexico History Museum in Santa Fe. A display there featured our very own Dr. Marianne Stoller and the archeological dig she did with Colorado College students at the Sanchez Site in La Cienega. This site and two others are considered to be New Mexico’s greatest archeological treasures. We thank Marianne, Henry, and Sharon for giving us a rare treasure of a trip!



FOUR CORNERS WES TRIP, SPRING 2011

The Woman's Educational Society of Colorado College
invites you to participate in the tour:

THE PREHISTORIC PUEBLOS OF THE FOUR CORNERS May 9-16, 2011

Dr. Marianne Stoller's next tour will explore some of the most famous Ancestral Pueblo (Anasazi) ruins, and some lesser known ones, in the Four Corners area. This region was densely occupied from c.200—1300 A.D. Recent research has discovered new knowledge on sites like Chaco Culture National Historic Park and Mesa Verde National Park. It has revealed a multitude of sites in the new Canyons of the Ancients National Park. In addition to visiting these sites, a half-day tour into Canyon de Chelly National Monument and a side trip to Monument Valley on the Navajo Reservation are planned. For more information, please contact Dr. Marianne Stoller at 719-634-4278 or mstollerl@msn.com; or Dr. Sharon Rice at 719-278-0981 or srice43@comcast.net.

Fee: To be determined.

The *WES SCHOLARSHIP FUND* has benefited greatly from our trips. All potential participants send a non-refundable deposit directly to tour organizer Marianne Stoller. We greatly appreciate the contributions made in 2010 by the people listed below:

Marge Abbott	\$100	Sharon Rice	\$200
Jim and Marty Keene	\$200	Sue Dilloway	\$100
Mary Andrews	\$100	Laurel Rogers	\$100
Cherry and Jack Kinney	\$200	Judy Druelinger	\$100
John Atkinson	\$100	Chris Schluter	\$400
Marlin Liles	\$100	Brian Ehrmantrout	\$100
Beth Ann Bassein	\$100	Dutch Schultz	\$100
Elizabeth Lilly	\$100	Greg and Lesley Flaks	\$200
Nancy Bentley	\$100	Phyllis Smith	\$100
Harry and Marianne Martin	\$300	Henry Gertzman	\$100
Duncan and Judy Burdick	\$400	Robert Stofac	\$100
Kay Mason	\$100	Georgia Gustafson	\$100
Ann Burek	\$100	Marianne Stoller	\$300
Lucy McLeod	\$200	Judy Jones	\$100
Barbara Byerly	\$100	Marjorie Von Frantzius	\$100
Lynn McLeod	\$200	William Kane	\$100
Mary Kay and Richard Carlson	\$200	Cena Weatherford	\$100
Pamela Pauwels	\$100	Marianne Katte	\$100
Judy Casey	\$100	George and Shirley Woolley	\$200
Sandy Raudabaugh	\$100	Jean Keeley	\$100
Linda and Mike Crissey	\$400	Judith and Phillip Cardin	\$100

We wish to thank the following people who made contributions to the WES Scholarship Fund during 2010

IN MEMORY OF ANNE CROSS AND RHODA LOU LAUBACHER

Leigh Bates, Susan Bernstein, Janet Cox, Pam Marsh, Marianna McJimsey, Jo Ann Orsborn,
Marion Sondermann, Janet Strouss, Paul Towner, Berta Walsky and Margaret Wiedherhold

Women's Educational Society Membership List

The following list reflects the membership paid from January 1, 2010 – December 31, 2010. All contributions above the \$25 membership dues are used for scholarships, programs and projects of WES to benefit students of Colorado College. Please notify us of any additions or corrections at (719) 389-7699.

*Designates current WES Board member

Contributing Life Members:	Kipp Kuerbis Kuhlman Leigh Lewis Lorig Marquesen Mashburn Maytag McGinnis McKellar McKellar McLeod McLeod Mendoza Murphy Murphy Murphy Neufeld Noyes Noyes Ordahl O'Rourke Park Parsons Pashby Peterson Peterson Pick Reid Reynolds Reynolds Riley Rixon Rodgers Rose Ross Russell Ryder Schlosser Schulp Sharp Smith Soden Straeb Swartzendruber Teason Thelin Thomas Thomas Ward Webb Weber Wiggins Yeager Young Zwinger	Vicky Catherine Naomi Helen Jean Estelle Rose Victoria Mary Cornelia Roberta Alden Helen Laurel Lucy Charlotte Charlotte Naoko Helen Richard Judy Doris Mary C. Hy Gia Florence Marge Pauline Judith Florence Marion Janet Judith Pamela Charlotte Suzanne Cynthia Mary Kitty Virginia Nancy Elizabeth Joan Persis Katherine Elizabeth Jean Ruth John Ellen Ann Lori Barbara Matilda Mary Joanne Ethel Ann	Silver Special Members:	Arnest Coeling Pfeiffer Simmons Welty Summa Cum Laude Members (\$500 and more): Latimer Magna Cum Laude Members (\$100 - \$499): Aikin Allen Ashley Bassein Boyles Brewington Cauvel Davis Dokken Dufault Enderson Francis Fuller Hall Ice Johnson Jones Keeley Kinney Lewis Lilly Lyons Marsh Mayers McElroy McJimsey Melcher Metzger Mitchell Munger Neyer Nolte Nycum Palazzari Patterson Pickle Ramsay Rice Richardson Riggs Ross Ruske Smith Stiles Vargo Wiederhold Wilson- O'Donnell Woolley Yalich	Cum Laude Members (\$50 - \$99):	Barbara Joyce Patricia Hope Janice Leigh Susan N. Amy Catherine Jana L. Marge* Lineah J. Barbara W. Sue* Anne Joanna Ann Dona Martha Barbara J. Mary Jo Dr. Rosalyn Mara T. Kathleen Catherine* Jo Marianne Judith L. Candace* Rashna Bonnie Georgette Caroline* Jane Judith	Disch Doyle Dufault Finley Flaks Fox Freudenburg Gebben Grinewich Harvat Henry Hurley Johnson Jones-Eddy Kasten Kule Lewis Madden McVean McWhorter Mickle Moe Nicks Olney Posniak Reed Roberts Rogers Sanger Schreibman Seay Simons Stark Theobald Towner Trater Valdez Walters Warner Zautke	Beverly B. Patricia Caitlin Judith R. Lesley C. Bernice* Patti Julia Dee Beth Kendra Phyllis Lynn A. Julie Judith Patricia Heidi R. Linda Maralee Vivian Gwen Patricia A. Terry Kathryn W. Naiara Gerri Anne* Patricia C. Laurel Ann B. Cayla Janine Frear Evelyn Rebecca Paul E. Paula D. Anna Robin Phyllis J. Beth*		
Life Members:	Nancy Phyllis Ashley Jean Diane Leslie Wilma B. Linda Rowenna Zella Ann Harriet Ann Irma Y. Eileen Mary Kay Melba JoAnne Anne Andrea Carin Stephanie Mary Lisa Catherine Helen Katherine Debra Ernestine H. Anne Judith Lyn Dorothy E.J. Ann Nancy Charlene Gerda Mary Helma Sylvia Wanda	Dorothy H. Elaine Marion	Contributing Silver Special Members:	Bradley Freed Sondermann	Baccalaureate Members (\$26 - \$49):	Elizabeth Deirdre Rhonda* Spot* Toni L. Kathryn Flo Elizabeth P. Namrita Carol	Ex-Officio	Edmonds Lundquist Stoller Mike Jacqueline Marianne	Scholar Members (honorary one-year member):	Heckman Moding Pizzie Robertori Rodriguez Hannah Kameron Rachel Lauren Loren
				Dues Members (\$25):	Andrews Barron Becker Beidleman Bennett Burdick Burns Byerly Cacatian Casey Christensen Cole Coriell Cox Crossen	Mary E. Gwendolyn William Dr. Richard G. & Linda Doris L. Judy Kathy Barbara Elaine* Judith Jane Patricia B.* Ellie Janet Rhonda & William	In Memoriam	<i>We regret to inform our members of the deaths of:</i> Rosamae Campbell Anne Cross Louise King Mary S. Pierce Joy Rucker Naomi Kuhlman		

MEMBERSHIP INFORMATION

For Regular Members, dues cover one calendar year and may be paid anytime from January 1 to December 31. If you would like to pay your 2011 dues now, please fill out the Membership Form below and return it along with your check.

Life, Silver Special, Ex-Officio and Honorary Members do not pay dues but are encouraged to support WES by making an annual contribution to the WES Scholarship Fund. Contributions made by these members are 100% tax deductible. **Acknowledgment letters suitable for 2011 tax purposes will be mailed to all members in January of 2012.**

To those of you who are not already members, WES extends an invitation for you to join our group. Every member is welcome to serve on a WES committee. Check the box below if you are interested and a WES Board Member will contact you. We look forward to having your support.

If you have questions about WES, either leave a message at (719) 389-7699 or online at WES@colorado-college.edu. Your message will be answered in a timely manner. Our website, www.ColoradoCollege.edu/WES, is a great way to learn about our programs, events and scholars.



THE WOMAN'S EDUCATIONAL SOCIETY
of COLORADO COLLEGE

MEMBERSHIP FORM

WES membership is open to all. Please select one of the following membership categories and make your check payable to WES. All contributions above the \$25 annual membership dues are used directly for scholarships, programs and projects of WES to benefit students of Colorado College and are **tax deductible**.

- | | |
|---|---|
| <input type="checkbox"/> Annual Dues \$25 | <input type="checkbox"/> Magna cum Laude \$100-\$499 |
| <input type="checkbox"/> Baccalaureate \$26-\$49 | <input type="checkbox"/> Summa cum Laude \$500 and above |
| <input type="checkbox"/> Cum Laude \$50-\$99 | <input type="checkbox"/> Previously registered as Life, Silver Sp,
Ex-Officio, or Honorary |
| <input type="checkbox"/> New Membership | <input type="checkbox"/> Renewal |
| <input type="checkbox"/> Scholarship Fund | |
| <input type="checkbox"/> I am interested in serving as a WES volunteer. | |

Name _____ Amount Enclosed \$ _____

Address _____

Phone _____ E-Mail _____

Send to:

The Woman's Educational Society of The Colorado College
14 East Cache La Poudre Street, Colorado Springs, CO 80903

COLORADO COLLEGE



THE WOMAN'S EDUCATIONAL SOCIETY
of COLORADO COLLEGE

14 East Cache La Poudre Street
Colorado Springs, CO 80903

Non-Profit Organization
U.S. Postage
PAID
Permit No. 105
Colorado Springs, CO

THE WOMAN'S EDUCATIONAL SOCIETY OF THE COLORADO COLLEGE

cordially invites you and your friends to a

Farewell Luncheon in honor of President Richard Celeste and Jacqueline Lundquist

With a special reading by Colorado's Poet Laureate
Professor David Mason

Thursday, February 17, 2011, at noon
Stewart House, 1228 Wood Avenue

Cost is \$30, which includes a donation towards a gift for the College in the President's honor.
Paid reservations are required by February 11.

If you cannot attend, would you like to contribute the price of lunch for one of our Scholars?

Name (for nametag) _____ Phone _____

Number in party _____ x \$30 = _____

Contribution to Scholar's lunch _____

Additional contribution to gift _____

Please mail this form and your check to: Elaine Cacatian, 4625 Debonair, Colorado Springs, CO 80917.
Questions? Call Elaine at 573-9861 or Sue Dilloway at 538-7647.