



S M F

The Colorado College 2024

hand book

The Colorado College Summer Music Festival 2024



Basics

What to Bring

- Sunscreen and lip protection (the sun is more intense here), sunglasses, **layers**, rain jacket, umbrella, athletic shoes, water bottle, casual attire, and swimsuit (for a pool party!)
- Wire music stand (optional)
- Blankets. We provide a light bedspread but rooms can get cold at night. We provide one pillow so please bring your own if you prefer using more.
- See more about concert dress on page 6.

Instrument Care

Storage

All festival fellows can request a key to a locker in Packard Hall, where they can store their instrument. A separate room for bass storage is available.

Repair

If any instruments are in need of repair during your stay, we will help you find a repair center.

Reed Players

Please be aware that the altitude changes the behavior of reeds.

String Players

It is highly advisable for string players to bring “dampits” for your instruments. Summer humidity levels in Colorado Springs are frequently in the 10-20% range.

Arrival

Please plan to arrive on campus no earlier than 10 a.m. on June 1 and no later than 8 a.m. on June 2. Residence Halls will be available for check-in at 10 a.m. on Saturday, June 1. Check out of your apartments will be by noon on Saturday June 22. Late arrivals and early departures are not acceptable unless pre-approved.; you must be here for the entire festival.

There will be a general meeting at 8:45 a.m. on June 2 with a light continental breakfast served.

Housing Check-In

When you arrive on campus you will need to check in for housing (Festival check in is separate, see page 5) at Hybl Community Center on the East Campus where you will be provided with a room key and directions to your apartment. The Hybl Center will be open between the hours of 10 a.m. and 10 p.m. If you plan on arriving outside of those hours you must let us know in advance so that we can arrange for you to pick up your keys with our residential intern.

Travel to Colorado College

Regardless of how you are travelling to the Festival, please let us know your travel plans on this [Google Form](#).

Air

If you are traveling by air, please be sure to let us know ALL the important information about your arrival, including: carrier, flight numbers, arrival times (indicate a.m. or p.m.), and WHICH airport, DIA in Denver, or COS in Colorado Springs. It is helpful to have layover information, and times for all legs of your journey. Enter your information on the shared Google doc we have provided.

If you are flying into Colorado Springs and have sent us your flight information, we will pick you up from the airport. After you collect your luggage look for a marked Colorado College van. If it is not there, wait; it may be on a round trip to the College and will return shortly. A Festival assistant will be in charge of the pick-up schedule. Please be sure to notify us if your flight is delayed or canceled. This number to text the driver will

be provided in the group WhatsApp chat closer to the festival date. You can always text Serena, the East Campus resident intern at (303) 515-1442 with travel details.

The driver picking you up at either the airport or shuttle drop off will take you directly to Hybl Center for check in.

If you are arriving to DIA in Denver, you can book a shuttle through [Groome transportation](#). For your drop off in Colorado Springs, be sure to select Hotels/Lodging, and then The Antlers—S. Cascade for your drop off in Colorado Springs. We will pick you up in front of the Antlers, which is just blocks away from the campus. You can also request via a call or email to Groome to be dropped off at Colorado College, by Boettcher Center on Cascade, though it will be up to the Groome driver and the number of other riders.

The shuttle runs every hour. It is around \$65 one way. Let us know if you have booked the shuttle and when you plan to arrive at the Antlers Hotel/CC. Make your shuttle arrangements before you arrive as most services require 24 hour advanced reservations to guarantee service. **It is not possible for us to pick up fellows from the Denver airport.**

If you are traveling by car

If you plan to arrive by car, please advise us of an estimated arrival time and when you plan to leave your departure city. Let us know your license plate number, make, model, and color in advance so that we can have your parking pass ready. You will be ticketed without one.

Please come directly to the [E-1 parking lot](#) (access is from Weber Street) where you will check in at Hybl Center to receive your room key, meal/access card, and a parking permit. See the campus map to find the East Campus apartments and E-1 parking lot. It is best to keep your car parked in this

lot while on campus. Your permit is valid in this lot, not in the lots near Packard Hall.

If you are arriving by bus

Let us know what time your bus arrives. We will provide transportation from and to the bus station in downtown Colorado Springs.

Driving Directions and Parking

If you are driving on I-25, take the Uintah exit #143 and turn east (away from the mountains). Drive up the hill and turn right on Weber Street. Continue south to E. San Rafael St, turn right and head straight to E1 parking to the right. You will pass the [Hybl Community Center](#) where your housing check-in will take place.

Festival Check-In

Check-in with the Festival staff will take place from 2 to 6 p.m. on June 1 at Packard Hall and again the next morning June 2 starting at 7:30 a.m. until the **general meeting at 8:45 (also in Packard Hall)**. You will receive a packet of information with the daily schedule, contact sheets, some studio and instrument locker keys, and forms to sign.

Note that lesson sign-ups, chamber schedules, notifications of received mail, and other messages will be posted on the bulletin board in Packard Hall lobby.

Auditions

Immediately following the Sunday June 2 8:45 am SMF meeting and introductions in the performance hall in Packard Hall, auditions will begin. The purpose of these auditions will be to form chamber music groups and to seat those not pre-assigned in the orchestra. You will be asked to play a short piece of your choice as well as orchestral excerpts. **Fellows will receive an email with a link to the excerpts. It will**

also be posted on the SMF website. Pianists will be required to play a short solo piece for auditions since music has been preassigned.

Departure

As with arrivals, we will help to coordinate transportation to the Colorado Springs airport or bus station, and, if requested, Groome Shuttle pick-up location in CS.

Festival Check-Out

Festival check-out will take place on Friday June 21, immediately following final Orchestra concert, in Packard Hall. lobby. Fellows are asked to turn in locker keys, ALL MUSIC, and download a sponsor thank you video, before receiving \$25 return from deposit. More information on where to send your video prior to checkout will be provided during the Festival.

Housing Check-Out

Check-out from the residence halls is express self checkout. You will be asked to drop off your room key and access/meal card in a designated box in one of the main spaces of your apartment building on the East Campus. Please arrange to check out by noon on Saturday, June 22. Please let us know if you need an extension.

Housing & Dining

Housing

Each fellow will have a private room in the East Campus Apartments, with shared bathrooms, living spaces and kitchens. Every room has bed linens, a pillow, and towels. Rooms are climatized and cool, so bring a blanket if you prefer more warmth. You must carry your room key at all times

because bedroom doors lock automatically.

You will additionally receive a Conference Card (like a school ID) that

you will use to swipe into your apartment, get meals, and access the music buildings and some practice rooms.

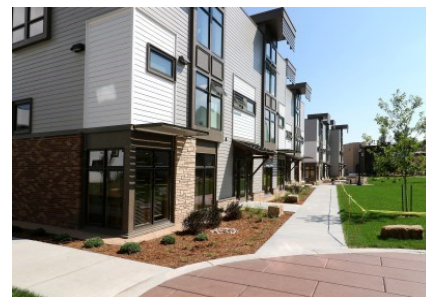
In order to maintain privacy, our cleaning staff cannot enter your living space, so you are responsible for cleaning your own kitchens. In additions, you will need to empty your room and communal trash. More information about this will be in your welcome packet. A resident intern will be living in one of the apartments and will post signs to help with keeping things in order and also to help with supplies.

Linens and Laundry

Linen Changes - Linen changes will be available once a week during the festival. More information will be posted in the apartments about how to pick up new linens and towels. The Hybl Community Center at East Campus is the usual place to exchange your soiled linens for clean ones. *Personal Laundry* – Washers and dryers are located in the Hybl Community Center laundry room. There is no charge to use the machines.

Kitchens

Each apartment has a kitchen that will be stocked with dish and hand soap and sponges. One apartment (TBA) will initially be stocked with all of our communal kitchen items such as dishes, cutlery, coffee pots, and tea kettles, as well as laundry detergent. You will all have access to that kitchen and should take what you need to use in your own kitchen. Please return items to the communal kitchen at the end



East Campus Apartments

of the festival. This kitchen is not necessarily considered the communal kitchen for social gatherings during the entire festival. Please be considerate of the upstairs occupants and take what you need to use to your own kitchen for use.

Wi-Fi

Fellows will have guest access to our Wi-Fi in the residence halls and academic buildings.

Dining

Dining is in Rastall Dining Hall, located in Worner Campus Center (across the street from Packard Hall, see map on page 10). The first meal available for Music Festival fellows will be dinner on June 1 and the final meal served will be dinner on June 21. Your meal cards are for lunch and dinner only. You may eat breakfast at Rastall but it is an extra cost you pay at the door. Grocery runs will be scheduled for breakfast foods and snacks.

Concerts

There are three Festival Orchestra concerts:

- Tuesday, June 11 at 7:00 p.m., in the Celeste Theatre / Edith Kinney Gaylord Cornerstone Arts Center



- Thursday, June 13 at both 9 and 11am in the Celeste Theatre/ E.K.G. Cornerstone Arts Center (Children's Concert)
- Friday, June 21 at 7:00 p.m. in the Celeste

Theatre/ EKG Cornerstone Arts Center

In addition, there are seven midday chamber music concerts in Packard Hall starting on Monday June 10 at 12:15. These concerts give all festival fellows an opportunity to perform in their chamber ensemble before a live audience. The schedules of groups' performances will be posted on bulletin board.

There will be at least two outreach concerts: which will be in your schedule.

Music Festival faculty will present five concerts during the festival, and all fellows are required to attend. Some of you have been invited to perform in these concerts.

All on-campus fellow concerts are recorded and will be posted on our YouTube channel.

Concerto Readings

All fellows have been invited to audition to read one movement of a concerto with the Festival Orchestra. Auditions will be held early in the festival. The readings will be open to the public on Saturday, June 15 at 2 p.m.

Concertos must be performance ready. All concertos must be pre-approved depending on availability of music. If you have questions about music please email our music librarian, Ryan Seward at rseward@ColoradoCollege.edu.

Concert Dress

For orchestra concerts the attire will be all black. Male-identifying individuals should bring a black long-sleeved shirt, black dress pants and black shoes. In addition, please bring a dark solid-colored long tie. Female-identifying individuals should wear a black long or 3/4 length sleeve blouse, black skirts that fall below the knee or black evening slacks and black shoes. Sleeveless blouses are not acceptable for orchestra concerts.

For music at midday concerts, fellows

should have dress slacks, black or white shirts or dressy daytime attire. Dress shirts and dresses in color are welcome. Low riding, midriff-baring, tight fitting, and low-cut décolleté fashions are not appropriate for concerts and will not be permitted. No



Packard Music Hall

jeans for any concerts.

For festival artist concerts, fellows should have black dress slacks or pants, and a black shirt. A black skirt with a colored top is permitted for female-identifying Fellows.

Music Library & SMF Facilities

Packard Hall houses the Albert Seay Library of Music and Art, an extensive collection of scores, recordings, and books about music. The building also contains the Performance Hall, practice rooms, classrooms, and lockers. You may check out keys to lockers and practice rooms, music stands, as well as music from the library. If you would like to practice in your room, you will need to bring your own music stand.

The E.K. Gaylord Cornerstone Arts Center houses the Celeste Theatre where all the Festival Orchestra and Children's Orchestra concerts will take place. The Flex Room is also in Cornerstone and is used for many rehearsals. The Main Space will host the

annual donor dinner and the celebration following the June 13 Festival Orchestra concert.

Tickets

All Festival Artists and Festival Orchestra Concerts are ticketed. Prices for the public are posted on our website.

Festival Fellows can purchase \$5 tickets for family members depending on availability.

Festival Artist Concerts

- \$35 General Public
- \$30 Donors
- \$5 All Students
- Free for Colorado College Students, Faculty and Staff

Festival Orchestra Concerts

- \$30 General Public
- \$25 Donors
- \$5 Non CC Students and Children (Free for Colorado College Students, Faculty and Staff)

The Children's Orchestra Concerts on June 13 and the midday concerts are free.

Student Life Mail

All mail and packages can be picked up in the Music Office in Packard Hall. We will post receipt of received mail on the bulletin board.

If you will be receiving letter mail, please have it sent to:

{Student Name}
c/o Colorado College Summer Music Festival
Department of Music
14 East Cache la Poudre Street
Colorado Springs, CO 80903



Garden of the Gods

If you will be receiving a **package**, please have it sent to:

{Student Name}
c/o Colorado College Summer Music Festival
Department of Music
819 North Tejon Street
Colorado Springs, CO 80946

Outings

We have planned at least two organized trips off campus, including a hike in the Garden of the Gods and Rock Rock Park or the Manitou Incline, depending on interest. Please bring appropriate attire for hiking if you plan to participate in these events (athletic shoes or light hiking boots are suggested; sandals not recommended).



View from CC Campus

Health Services

Although the Music Festival is not responsible for securing the professional services of a physician, if such services are required, fellows may request referrals to local doctors.

Campus Recreation

The college is located next to the Monument Valley Trail which is great for running and walking. Fellows will also have access to the Adam Press Fitness Center and Schlessman Natatorium in our El Pomar Sports Center. Summer hours will be updated on the [CC website](#).

Weather

Colorado Springs is the second largest city

in Colorado with an altitude of 6,035 feet above sea level, and is known for its moderate temperatures throughout the year. The average number of days of sunshine is 300 and the average snowfall is 37 inches per year.

Colorado Springs is close to the mountains so the weather can change at a moment's notice. Summer can become quite warm, but remember to pack an umbrella and or rain jacket as afternoon summer storms are common. You'll probably need a light jacket or sweater for cool summer nights. We are considered high mountain desert, so the humidity is usually quite low compared to other regions of the U.S., causing temps to drop significantly at night.

High Altitude

Colorado has the highest average elevation of any of the states and has many opportunities for hiking, biking, rock climbing, etc.

If you come from an area which is lower in elevation, you may experience "altitude sickness" due to the decreased amount of oxygen in the air at higher elevations. Symptoms can be shortness of breath, nausea, dizziness, increased heart rate, decreased appetite, and insomnia.

To prevent or reduce the symptoms of altitude sickness here are a few things to



Pikes Peak; 14,111 feet

keep in mind:

- Avoid strenuous exercise for the first few days
- Drink lots of fluids, especially water, and avoid alcohol.
- Remember to eat; decreased appetite is a symptom of altitude sickness.



Colorado Springs Local Attractions

There are many local attractions within walking distance of the Colorado College Campus. The Fine Arts Center and Money Museum are very close to the campus. Downtown Colorado Springs is just a few blocks south and is home to a variety of art galleries, shops, museums, and restaurants as well as the beautiful Acacia Park (map of downtown on page 11). Other local attractions in the Colorado Springs area will require transportation from campus.

[Manitou Springs](#)

[The Manitou Incline](#)

[The Broadmoor](#)

[Seven Falls](#)

[Pikes Peak Cog Railway](#)

[Pikes Peak](#)

[Red Rocks Open Space](#)

[Garden of the Gods](#)

Biking

Colorado Springs and Colorado College has great electric bike, with hubs on the campus. See more at [CCPikeRide](#) and Downtown [Pike Ride](#).

We STRONGLY ask that Fellows refrain from using E-Scooters. In years past fellows have experienced serious accidents resulting in injuries that interfered with chamber groups and orchestra performances. Do not put your colleagues in this situation.

SMF Conduct Policies

Enrollment obligates festival fellows to conduct themselves as responsible members of the Colorado College Summer Music Festival. Behavior on or off campus that discredits the individual or the Music Festival may result in disciplinary action. The Colorado College Summer Music Festival reserves the right to suspend or expel a fellow regarded as being in conflict with the best interests of the College and in violation of its rules and regulations. Refer to the Colorado College [Pathfinder](#) for conduct policies for the college.

Alumni



Information

We encourage you to keep us informed of your performances and other successes in your career. Please let us know if you are offered a position with an orchestra, are teaching at a school, or place in a competition. Send your information to festival@coloradocollege.edu and then please ask to join our private alumni Facebook page, "Colorado College Summer Music Festival Alumni."

We do Instagram Alumni Fellow spotlight posts throughout the year, so please keep us informed on your career development!

Follow us on Instagram!
[@ccsummermusicfestival](#)

PRODUCED BY THE OFFICE OF COMMUNICATIONS
Date: August 2021

Note: all parking lots have accessible parking, except the far west WC lots.

Numerical listing on second page.

- Emergency telephones
- City bus stops
- College permit parking
- Paid visitor parking
- Admission visitor parking
- PikeRide bike sharing stations
- Accessible building entrances
- Electric vehicle charging station
- Sidewalks and other paths
- Accessible route
- Stone fine path (uneven surface)
- City permit street parking only
- Paid meter street parking

MOUNTAINS



Building numbers on the map begin with 01 at Armstrong Hall and proceed clockwise around campus, ending with 127 at the Senior Faculty Offices

- 1** Fellow Apartments
- 2** Hybl Community Center (housing check in)
- 3** Worner Campus Center (dining hall)
- 4** Packard Hall (Festival check in)
- 5** Cornerstone Arts Center

COLORADO COLLEGE



Color and number next to name indicate block and side of the block where the business is located.

Shopping/Dining Core

Parks & Open Space

Fountain

Trails/Trail Access

Visitor Information
(Acacia Park site is seasonal)

Transit Hub

Public Parking
(City-operated)

Public Parking

PikeRide
bike share station



- Districts
- Near North End
 - City Center
 - East End
 - Southwest
 - New South End

April 2018

SUMMER MUSIC FESTIVAL CONCERT SCHEDULE 2024

Wednesday	June 5	Festival Artists	7 pm	Packard Hall
Saturday	June 8	Donor dinner <i>with</i> Fellow performances	5:00 pm	CAC Main Atrium
		Festival Artists	7: 00 pm	Packard Hall
Monday	June 10	Music at Midday	12:15 pm	Packard Hall
		Hillside Outreach Concert	1:30 pm	Hillside Center
Tuesday	June 11	Festival Orchestra	7:00 pm	Celeste Theatre CAC
Wednesday	June 12	Music at Midday	12:15 pm	Packard Hall
Thursday	June 13	Children's Concert	9 & 11 am	Celeste Theatre CAC
		Pre-Concert Recital	5:45 pm	Packard Hall
		Festival Artists	7:00 pm	Packard Hall
Friday	June 14	Music at Midday	12:15 pm	Packard Hall
Saturday	June 15	Concerto Readings	2:00 pm	Celeste Theatre CAC
Monday	June 17	Music at Midday	12:15 pm	Packard Hall
		Festival Artists	7: 000 pm	Packard Hall
Wednesday	June 19	Music at Midday	12:15 pm	Packard Hall
Thursday	June 20	Music at Midday	12:15pm	Packard Hall
		Pre-Concert Recital	5:45 pm	Packard Hall
		Festival Artists	7: 00 pm	Packard Hall
Friday	June 21	Music at Midday	12:15 pm	Packard Hall
		Festival Orchestra	7:00 pm	Celeste Theatre CAC

You will receive a more detailed daily schedule in your welcome packet when you arrive. Updates/changes to the schedule will be posted on the bulletin board.

FACULTY

Susan Grace, Music Director, piano
Virginia Barron, Assoc Director, viola
Scott Yoo, Conductor, violin
Steven Copes, violin
Mark Fewer, violin
Laura Frautschi, violin
Stefan Hersh, violin
Ayano Ninomiya, violin
Stephen Rose, violin
Andrew Wan, violin
Toby Appel, viola/violin
Phillip Ying, viola
Mark Kosower, cello
Bion Tsang, cello
David Ying, cello
Susan Cahill, double bass
Alice Dade, flute
Elizabeth Mann, flute
Robert Walters, oboe, English horn
Jon Manasse, clarinet
Richard Hawkins, clarinet
Michael Kroth, bassoon
Michael Thornton, horn
Kevin Cobb, trumpet
Jack Sutte, trumpet
John Rojak, trombone
John Novacek, piano
Bill Wolfram, piano

STAFF

Ann Van Horn, Assistant Director
Lisa Gregory, Music Department
Administrator
Jenna Hunt, SMF Assistant
Ryan Seward, Music Librarian
Shane Grothoff, Production Coordinator
and Assistant to Directors
Karen Britton, Assistant to the Assistant
Director
Serena Nguyen, SMF Intern, Social Media
Ian Day, SMF Intern, Asst Product Coord.
Oliver Goslin, SMF Intern, Cameras
Neo Li, SMF Intern, Usher
Orlando Monroy, SMF Intern, Video

Contact

Please contact the Festival Office with additional questions or information before you arrive at the Colorado College Summer Music Festival:

Ann Van Horn:
E-mail : avanhorn@ColoradoCollege.edu
Tel. (719) 389-6552 or Cell (719) 238-5972

Karen Britton
E-mail: kbritton@ColoradoCollege.edu
Cell: (719) 651-9188

Susan Grace:
E-mail: sgrace@ColoradoCollege.edu
Cell: (719) 339-0162

Virginia Barron:
Email: vbarron56@gmail.com
Cell: (716) 906-9783

Colorado College Main Information
(719) 389-6000

Colorado College Campus Safety
(719) 389-6707



The Colorado College
Summer Music Festival
14 E. Cache La Poudre Street
Colorado Springs, CO 80903
www.coloradocollege.edu/musicfestival
719.389.6552