



THE WOMAN'S EDUCATIONAL SOCIETY
of THE COLORADO COLLEGE

Newsfocus

WINTER 2012

FOUNDED IN 1889 TO GIVE ASSISTANCE TO THE STUDENTS OF COLORADO COLLEGE



WES is MORE!

Newsfocus

WINTER 2012

The WOMAN'S EDUCATIONAL SOCIETY (WES) is an autonomous community organization founded on April 20, 1889, to foster support of Colorado College. Its purposes are to bring community and college together, to give assistance to students of the college, and to undertake programs and projects to benefit the college, particularly women of the college. Gifts to WES are tax-deductible. *Newsfocus* is published twice a year as a service to members and friends of WES.

BOARD OF MANAGERS

Diane Benninghoff, Linda Boyles, Elaine Cacatian, Meg Chojnacki, Lana Coffman, Sue Dilloway, Penny Dokken, Trish Eccles, B. Fox, Laura Hagler, Rhonda Heschel, Beatrice Jefferson, Catherine Lewis, Sally Metzger, Barbara Mitchell, Connie Patterson, Sharon Rice, Candace Santa Maria, Marlene Smith, Caroline Vulgamore, Cathy Wilson-O'Donnell, Shirley Woolley, Beth Zautke.

WES OFFICERS

Co-Presidents: Caroline Vulgamore, Shirley Woolley

First Vice President: Sue Dilloway

Second Vice President: Sharon Rice

Recording Secretary: Trish Eccles

Corresponding Secretary: Marlene Smith

Treasurer: Barbara Mitchell

Assistant Treasurer: Beth Zautke

COMMITTEE CHAIRS

Executive: Caroline Vulgamore, Shirley Woolley

Finance: Cathy Wilson-O'Donnell

Fundraising/Projects: Cathy Lewis

Membership: Sue Dilloway

Nominating: Cathy Wilson-O'Donnell, Rhonda Heschel

Program: Sharon Rice

Publicity: Rhonda Heschel

Scholarship: Linda Boyles, B. Fox

Ad Hoc: *A Quiet Work*: Sue Dilloway, Sally Metzger

Ad Hoc: WES Trips: Sharon Rice



**WES is now
on Facebook!**



Find us on Facebook and keep up with WES events and news! Go to www.facebook.com and search for "Woman's Educational Society of Colorado College."

Click "Like" to join us on Facebook and receive updates from WES. See you online!

You can also find out about WES events at our website: www.coloradocollege.edu/WES and contact us at wes@coloradocollege.edu with comments or questions.

Message from the Co-Presidents

Happy 2012 to you all - as we reflect on WES accomplishments, we can't believe we're well into Block V. We've added new board members, set records for fundraising, kept in touch with scholars and sponsored innovative programs for members and guests.

Kudos to Sally Metzger for chairing the best-attended Van Briggie tours ever and to Cathy Lewis for tirelessly promoting cards, bookmarks and Van Briggie booklets. Sharon Rice not only helped Marianne Stoller with another successful Southwestern trip, but led the program committee in sponsoring an ice cream social in September, Professor Mario Montaña's luncheon program in November and Jill Tiefenthaler's luncheon address in January. Our annual meeting and senior scholars' presentation luncheon will be April 26th. Please save the date!

With scholars in mind, Linda Boyles and B Fox organized a welcome for new scholars and their parents in August and a chili supper in October. They're planning a

scholar game night with pizza on February 22nd and a picnic on May 11th. Now that we're 123 years old, an ad hoc committee chaired by Sue Dilloway and Sally Metzger is revising *A Quiet Work*, and we're more aware of our amazing history.

Behind the scenes, board members worked on finance, membership and publicity. Many of us mentored scholars and continue to be incredibly proud of their accomplishments.

Much remains to be done: We must increase membership, maintain fund-raising and continue adding members to our board. We're searching for a trip coordinator volunteer so we can keep offering the popular WES trips.

Be sure to renew your dues. In these difficult times, talented CC scholars need support. WES keeps opportunities alive for America's future leaders. Contact us at WES@coloradocollege.edu or (719) 389-7699.

—Caroline Vulgamore and Shirley Woolley

New WES Board Members

Beatrice Jefferson was born in Baton Rouge, Louisiana and is the proud mother of two children and four granddaughters. She earned her Bachelors degree in education from Southern University and later earned her Masters degree at Colorado College. Beatrice taught for 34 years in District Eleven in grades first through sixth. Teaching was one of the most rewarding experiences of her life, second only to being a parent. She says, "Working with children and impacting their lives in positive ways by helping to mold and influence them to become productive citizens in society has enriched my life in ways I could not have imagined. I am so proud to have been an educator." Beatrice has been a member of Delta Sigma Theta Sorority since 1973. She has built houses for Habitat for Humanity, volunteers with a literacy program at a local hospital to encourage reading in ill children, and works with the Ruby Hall Scholarship Program. She has been a Fine Arts Center Docent since 2005 and enjoys sharing her knowledge of art with students touring the FAC. Beatrice is also a member of Holy Apostles Catholic Church and volunteers there as a Stephens Minister.

Meg Chojnacki graduated from Colorado College in 1966 and spent the next 30 years traveling around the world, moving thirteen times! Meg spent the most time in Washington, D.C. and in the Far East including Japan and Korea. An educator, Meg earned a Masters degree from Gaudet University in Washington, D.C., in

1981. She had the distinct honor of being named one of the USA Teachers of the Year in 2001. She retired from teaching and started a consulting/interpreting business in 2003 and is completely retiring this year. Meg is married and has two sons.

Trish Eccles came to Colorado Springs during the summer 2011 with her husband who is on leave from Rose-Hulman Institute of Technology, Terre Haute, Indiana, to teach at the Air Force Academy through the academic year 2012-2013. Welcoming Trish to Colorado Springs was Shirley Woolley, co-president of WES. Shirley and Trish had volunteered together for several years in TREES Inc. in Terre Haute! Small world! Trish, in the late 1960s before she became an at-home mom to two children, was Assistant Dean of Women at the University of South Carolina, where she later taught Computer Science as an adjunct instructor. During the past twenty years in Indiana, she has served in a leadership capacity on the Boards of the Indiana Urban Forest Council, Terre Haute's City Tree Advisory Board, TREES Inc., Indiana National Road Association, National Road Alliance, and Rose-Hulman Women's Club. She also volunteered as coordinator of Adult Christian Education and part-time organist for St. George's Episcopal Church in West Terre Haute, Indiana.

Welcome Beatrice, Meg and Trish!

Upcoming Events - Come and bring a friend!

Women of the West Annual Luncheon

The Woman's Educational Society's (WES) endowment was established in 1989 with the Hulbert Center for Southwest Studies to commemorate the 100th anniversary of the WES. The endowment supports the annual lecture "Women of the West." Don't miss this year's event! Please watch our website for more information closer to the date.



This year's speaker will be:

Michèle Companion, PhD

Assistant Professor of Women's and Ethnic Studies
at the University of Colorado, Colorado Springs.

Thursday, March 1, 2012

Gaylord Hall, Worner Center at Colorado College
12:00 p.m.

Also mark your calendar for the WES Annual Meeting on April 26th.
We look forward to a wonderful lunch and presentations by our Senior WES Scholars.

SCHOLAR UPDATES



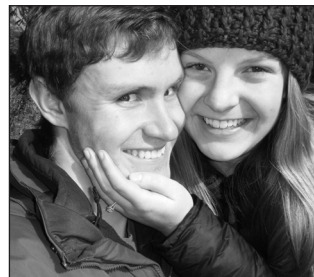
Senior scholar **Emily Moore** is a sociology major with a minor in education. She enjoyed taking a summer class in Paris entitled, "19th Century Art and Music History." The art history portion of the course examined the birth, death and rebirth of Romanticism in painting. The studies were enhanced by visits to the Louvre, the Orsay and

the Orangerie Museums. The music history portion focused on the music of Chopin, Liszt and Berlioz. During the three weeks of the course, the class attended several concerts. A portion of Emily's expenses was covered by THE DOROTHY P. BRYSON SPECIAL ASSISTANCE FUND. Emily is also the co-chair of the Break-Out program which is a service organization that sends student-led trips out to volunteer on Saturdays, block breaks and during spring break. She is also a member of the Relay for Life Committee where she is survivorship chairman and co-chair for the AppreCCIate Scholarship committee. Loving dance, she teaches little girls and was very proud of her accomplishments when her students performed in a recent recital. Emily is not sure of her plans after college, but she hopes to be involved in child advocacy. She has loved her sociology classes at CC and the wonderful internships that they have led to. Regarding her association with WES she states, "I am most appreciative of all the support from the WES ladies and my mentor, Shirley Woolley."

Senior Scholar **Ann Evankow** is a biology major. She describes 2011 as a phenomenal year for her major. In the summer she performed research as part of a National Science Foundation Research Experience for Undergraduates at the Mount Desert Island Biological Laboratory on the coast of Maine. Her daily schedule involved collecting water samples on the dock, wading in a meadow of sea grasses with a wetsuit and setting out buoys with the lab's motor boat. She had a perfect view of the bay from her work space, so even if she needed to enter data or write about the day's findings, she was in a beautiful place. While she was at the lab, she completed an independent research project on restoration methods of transplanting the sea grass species *Zostera marina*. This semester, she is expanding her research into a senior thesis. Annie also completed two exceptional classes this semester. In field botany with Professor Tass Kelso she spent many class periods on the outskirts of Colorado Springs collecting and identifying plant species. The class was even able to dry, mount and preserve some of the species for the Colorado College Herbarium. In third block she took Teaching Science and Health in Elementary Grades with Professor Mike Taber. She is thinking more about becoming involved with education. This

class allowed her to spend time in a 5th grade classroom every weekday and practice teaching a few lessons. Annie says, "The WES has helped me tremendously to become a successful fourth year student at CC. Being a science major requires purchasing expensive books for class. We also rarely have time to keep a part time job because of morning class and afternoon labs. The book scholarship has allowed me to select classes without worrying about which books will be required. The WES members have also been extremely supportive since my first year at CC. Everyone keeps track of my accomplishments and wants to know how I am doing at the events. My WES mentor Gerri Anne Reed is always there for me, whether I need a ride to the airport, a place to spend Thanksgiving or someone to talk to. She has been there since the beginning and will remain a close friend after I graduate."

Scholar **Christa Carroll** is truly amazing as she is still listed as a junior WES scholar, but she is preparing her senior thesis and plans to graduate in 2012, one year early. Christa came to us in the fall of 2009 an exceptional student and a sweet young lady. At that time she was accompanied by Tyler, a young gentleman and a cadet at the United States Air Force Academy. Now Tyler and Christa are engaged and will be getting married in June in Rocky Mountain National Park. Tyler's major is developmental engineering and Christa hopes to get a Masters in library science. In her spare time, her passion is weaving. Right now she is working on her senior thesis which evaluates a set of paintings in the Topkapi Palace Library in Istanbul. They are attributed to a Muhammad Siyah Qalam (Muhammad of the Black Pen), although that's a false attribution. They are very interesting because they are a blend of Persian and Chinese styles. The paintings are of demons and nomads and seem to tell a story which appears to be lost.



Senior scholar **Emily Conway** also recently became engaged. Her long-time boyfriend Ben Schmitt proposed during a trip to Alaska last summer. They were on a kayaking trip in Tutka Bay, an isolated bay off of the Kenai Peninsula.

Congratulations Emily and Ben!

Desirae Martinez is a senior scholar majoring in math and has two minors, chemistry and feminist/gender studies. She is also working on premedical requirements. She was a 2010-2011 Euclid Scholar and she participated in the Summer Medical and Dental Education Program at the University of Washington School of Medicine, where she graduated with honors. Last summer, she was a research intern at the Oregon Health and Science

University's Biostatistics and Bioinformatics department in Portland, OR, developing a statistical methodology for analyzing mass spectrometry data to understand sarcopenia in elderly men. She is also a mentor for the Early Birds and Mighty Math tutoring programs working with elementary and middle school students. Her experience in working with these students, all of whom come from low-income families, is that their lack of confidence in math tends to steer them away from scientific careers. In her opinion, if she wants to see more diverse students pursuing math and science careers, early education is the pivotal starting point. Desirae is a premedical student and her goal is to matriculate in the fall of 2013 or 2014, depending on whether she wants to take one or two years off after graduation. Her motivation for pursuing a career in health sciences stems from her passion for improving healthcare for underserved and underprivileged communities. For this reason, she is interested in a MD/MPH dual-degree program and would love to explore a career in emergency medicine, primary care, preventive medicine, or pediatrics. She has been an intern at Planned Parenthood of the Rocky Mountains Westside Clinic for the past year and a half. After graduation Desirae will be working with Americorps to be a tutor/mentor for middle and high school students. Desirae says "CC has been a wonderful academic experience for me. I love the block plan and the wonderfully dedicated professors who sincerely care about teaching their students. However, as a first-generation college student of color, I felt like I didn't belong here at times. There have been many cases when conversations in the classroom about gender and racial inequality mirrored the privileged socioeconomic status of the majority of the student population and left me feeling alienated. For this reason, I am so incredibly thankful to have been a part of WES. The ladies have always made me feel like family, and sometimes all you need is a chili dinner or a game night to make you feel welcome and at home."



Erin Conner, a sophomore scholar, has not yet declared a major, but is strongly looking at English with a minor in music. She plans to attend nursing school after she graduates from CC in 2014. Erin plays the cello in the orchestra, in a trio, and for herself, whenever she has the time to play. She works in the Career Center as the resume intern. She is planning

on volunteering at Penrose Hospital next semester. She loves to read and enjoys running, cooking and yoga. She recently delved into reading the Fellowship of the Ring Trilogy. She is excited to travel to Ireland summer of 2012 to learn about Irish culture and music.

Tiffany Cardenas, a sophomore scholar, is planning on declaring neuroscience as her major. She enjoyed neuroscience when she took it first and second block this fall. She also enjoys other science classes affiliated with

this major. This year, when she hasn't been busy with lab or studying she has been involved with Knots for Nets. This organization makes bracelets and sells them to raise money for the Against Malaria Fund and Rotaract's Game Club. This club plays games with underprivileged students at local elementary schools. Tiffany works for athletic marketing at the Tiger games. She distributes materials and sometimes participates in the "between period" activities at the World Arena. She loves this job as she gets to interact with the fans and feels inspired by the spirit that is shown for the Tigers. After graduation Tiffany plans to take a year off to travel and do research and then attend Physical Therapy school. Tiffany states "CC is awesome. I am so happy this is my home. Everyone I have met is just great and I especially love everyone in WES. They always make my day better, especially when I've had a busy and rough day!"

Sophomore Scholar **Claire McNellan** recently participated in the Western Regional Oireachtas (Irish dancing) Championship in Anaheim, California. She attended this event as a member of the McTeggart School of Irish dance's Senior Figure Choreography event. This is a team made up of 16 ladies from all over Colorado. They placed second in the event; it was an incredible time with a great finish. In December she participated in CC's International Service program to India which extended through 5th block. Claire says "I could not be more thankful for the aid WES has provided for me, both financial and social. The support, encouragement, and tasty homemade treats I receive from WES members mean so much, especially when I'm struggling through a difficult block. The WES scholarship money helps me to be able to afford such incredible opportunities as my trip to India. The pressure of affording expensive textbooks and materials is relieved and I am so grateful for that. Additionally, through WES, I have met student friends that have made my transition to CC so much easier! I am currently rooming with fellow WES scholar, Tiffany Cardenas, and we braved it through Neuroscience together earlier this year!"

Maia Wynn, Junior Scholar, is presently in London studying in a prestigious psychology program. Psychology is her major and she is intending to minor in Art Studio. Maia spends a lot of her time in choir; this is her 5th semester participating in Chamber Chorus. Maia enjoys photography, baking, singing and reading in her spare time. Upon graduating from CC she plans to attend a culinary school. Maia writes "CC has been good to me. I love the academics and the professors are amazing. I love the good ladies of WES. I always brag to my friends about how amazingly sweet you all are and they are always jealous of the goodie bags you guys send. The liberal arts education has really fostered my way of thinking, everything is interdisciplinary and it's fascinating! Taking a feminist class as a freshman for my FYE really affected my way of thinking in a good way! The professors in the psych department (mainly Tomi Ann Roberts and Emily Chan) have been great supporters and leaders for me."

What's WES Been Up To?

The Van Briggles Tour

This year's Van Briggles Tour was our best-attended yet! Over 300 people toured the historic pottery building, enjoying a lovely day and the fascinating history of Artus and Anne Van Briggles. This year we were lucky to have master stone carver Larry Terrafranca with us to discuss his artistic vision in creating the new wall on the corner of Uintah and Glen. We are so grateful to our WES tour guides and to all who helped with the tour.



Ice Cream Social

WES scholars and members enjoyed delicious treats at an Ice Cream Social held at Stewart House in September. A bit of rain didn't dampen any spirits as we enjoyed ice cream and great conversation!



Scholar Florita Villagrana was introduced as the Marianne Stoller Scholar.

Chili Supper

In October, scholars and members came together for a warm dinner on a cool evening. Our annual Chili Supper was a wonderful time. Scholars shared their news and we sampled a wide array of chilis, salads, breads and desserts. It was a lovely time!

Fall Luncheon

As promised, we didn't have to eat monkey at the November 30th WES luncheon!

What 75 WES members, guests and scholars did get to enjoy was a variety of foods common to the pre-Columbian peoples of North America, topped off with food that blended old-world cuisine with that brought by the Spanish, French and English to create what we now call "Mexican food."

It was a feast for the mind as well as the stomach as CC Professor Mario Montaña, an anthropologist specializing in studying these civilizations through food, helped us all learn about the ingredients, the cultures and the celebrations associated with the food. We tasted the original hot cocoa – without sugar, which would not have been available in the new world – then devoured our salads of jicama, cucumber, orange and mango with cilantro vinaigrette. Our main course, celebrating the colors of the Mexican flag, brought together the green poblano chili relleno, with ground meat (beef, not monkey), raisins and cinnamon in a white walnut sauce. On the side we enjoyed beautiful grilled squash, lightly seasoned with honey and sprinkled with pomegranate seeds. And finishing it off with more chocolate, Chef Ed of Bon Appétit created a flourless – that's right, no wheat flour before the Europeans came – chocolate cake. We enjoyed traditional beverages as well, hibiscus tea and coffee.

"How do you make that?" was the question on the minds of many. With help from Professor Montaña and Chef Ed, we will have the recipes available for a small donation at our Annual Meeting and Luncheon on April 26th. Watch for your invitations.



Professor Mario Montaña with Emily Conway and Beth Zautke



Huge thanks to Lana Coffman and Diane Benninghoff for planning a unique and exciting fall luncheon!

WES Trip: "The Wonders of Southeastern Utah"

"Wonders" in the above title, says it all!! How can one group of people be so very lucky to have ideal weather, scenery, companionship and the opportunity to learn while having fun? As you can image, Dr. Marianne Stoller shared her amazing knowledge about the land, the people and the history of the area. Gary Ladd provided us with fascinating geological information about the various landforms, but please do not ask us whether the formations were created in the Mesozoic or Cenozoic eras or if the land rocks were Navajo or Kaibab. Poor Gary, none of us could pass his tests, but we sure had fun learning about this magnificent area. Did you know that the sun is 5 billion years old and is halfway through

its lifespan? Gary also shared his astronomy knowledge with us one evening.

The fall colors were spectacular and the Navajo guides in Monument Valley were fascinating. Do you know the difference between a male and female Hogan? We learned about this while exploring the region. The sites of Arches, Canyonlands, and Moab were inspirational. All 25 of us ate, played and appreciated Dr. Marianne Stoller's genius in planning this most memorable experience.

Thanks to Sharon Rice for keeping us well-fed, comfortably lodged and on schedule - all with a sense of humor, patience, and kindness.

Women's Educational Society

Membership List

The following list reflects the membership paid from January 1, 2011 - December 31, 2011. All contributions above the \$25 membership dues are used for scholarships, programs and projects of WES to benefit students of Colorado College. Please notify us of any additions or corrections at (719) 389-7699.

*Designates current WES Board member

2011 CONTRIBUTING LIFE MEMBERS

Abbott	Marjory
Aronovitz	Alice
Ashley	Barbara
Benninghoff	Diane*
Clement	Lee
Dillard	Jane
Gordon	Diane
Joseph	Gerda
Knapp	Helene L.
Larkin	Joyce C.
Lindeman	Elizabeth
Mallory	Lillian
Salata	Mary Martin
Stone	Ruth
Strouss	Janet
Thelin	John
Walsky	Berta
Webb	Barbara

2011 LIFE MEMBERS

Baggs	Nancy
Baker	Phyllis
Barton	Jean
Bergstrom	Leslie
Biegelsen	Wilma
Blattspieler	B.
Bliss	Linda
Blum	Rowenna
Bowers	Zella
Bramwell	Jeannine
Brooks	Ann
Brooks	Harriet
Brown	Ann
Budington	Irma Y.
Carlson	Mary Kay
Cimino	Melba
Clark	JoAnne
Corley	Carin
Corley	Anne
Corley	Andrea
Crain	Stephanie
Dawson	Lisa

Edborg	Catherine
Eppley	Helen
Ethridge	Katherine
Evans	Debra
Fagan	Ernestine H.
Galbraith	Anne
Gigliotti	Judith
Griffiths	Lyn
Harman	Dorothy
Harrison	E.J.
Hieronymus	Ann
Hochman	Nancy
Johnston	Charlene
Jones	Jean
Kanas	Mary
Kaufman	Helma
Kelso	Sylvia
Kerns	Wanda
Kipp	Vicky
Kuerbis	Catherine
Leigh	Helen Jean
Lewis	Estelle
Lorig	Rose
Marquesen	Victoria
Mashburn	Mary
Maytag	Cornelia
McGinnis	Roberta
McKellar	Alden
McKellar	Helen
McLeod	Laurel
McLeod	Lucy
Mendoza	Charlotte
Murphy	Charlotte
Murphy	Naoko
Neufeld	Helen
Noyes	Richard
Noyes	Judy
Ordahl	Doris
O'Rourke	Mary C.
Orsborn	JoAnn
Park	Hy Gia
Parsons	Florence
Pashby	Marge
Peterson	Judith
Peterson	Pauline
Pick	Florence
Rasor	Celia K.
Reid	Marion
Reynolds	Janet
Reynolds	Judith
Riley	Pamela

Rixon	Charlotte
Rodgers	Suzanne
Rose	Cynthia
Ross	Mary
Ryder	Virginia
Schlosser	Nancy
Schulp	Elizabeth
Sharp	Joan
Smith	Persis
Soden	Katherine
Straeb	Elizabeth
Swartzendruber	Jean
Teason	Ruth
Thomas	Ann
Ward	Lori
Weber	Matilda
Wiggins	Mary
Wilson	Miwako
Yeager	Joanne
Young	Ethel
Zwinger	Ann

CONTRIBUTING SILVER SPECIAL MEMBERS

Arnest	Barbara
Bradley	Dorothy H.
Freed	Elaine

SILVER SPECIAL MEMBERS

Coeling	Joyce
Simmons	Hope
Sondermann	Marion

Summa Cum Laude Members (\$500 and more)

Woolley	Shirley* & George
---------	-------------------

Magna Cum Laude Members (\$100 - \$499)

Aikin	Elizabeth
Allen	Carrie
Ashley	Susan
Boyles	Linda*

Brewington	Sue
Burdick	Judy
Cauvel	Jane
Crossen	Rhonda
Davis	Thomiana
Dilloway	Sue*
Dokken	Penny*
Enderson	Betty
Fuller	Kalah
Hyde	Ann
Ice	Sherrill
Johnson	Jane K.
Jones	Judy A.
Keeley	Jean A.
Keener	Barbara J.
Kinney	Cherry C.
Latimer	Rachelle
Lewis	Nancy
Lilly	Elizabeth
Lindeman	Kathleen
Lyons	Yolanda
Marsh	Pamela
Martin	Marianne
Mayers	Lisa
McElroy	Janice H.
Munger	Denise Kennedy
Neyer	Linda
Nycum	Vicki
Palazzari	Catherine
Patterson	Constance*
Pickle	Judy & Joseph
Ramsay	Glenna
Rice	Sharon*
Richardson	Helen
Riggs	Kelley
Ross	Eloise
Ruske	Sharon
Stiles	Jeanne
Tweed	Ann
Vulgamore	Caroline*
Wilson-O'Donnell	Cathy*
Yalich	Barbara

**Cum Laude Members
(\$50 - \$99)**

Bassein	Beth Ann
Becker	William
Breen	Catherine
Burke	Jana
Byerly	Barbara
Cole	Patricia B.
Dufault	Momilani Ching
Fischer	Joanna
Hecox	Ann
Heschel	Rhonda*
Hildebrand	Dona
Kimbrough	Mary Jo
Knepell	Dr. Rosalyn
Kollmeyer	Lorna

Lane	Toni L.
Lapp	Kathryn
Lewis	Catherine*
Lunsford	Jo
McJimsey	Marianna
McVean	Maralee
Metzger	Sally*
Mitchell	Barbara*
Olson	Mildred
Panco	Marilyn
Reid	Judith
Santa Maria	Candace*
Smith	Dr. Marlene*
Turvey	Bonnie
Van Egeren	Georgette
Walters	Robin
Wray	Judith

**Baccalaureate Members
(\$26 - \$49)**

Bevington	Elizabeth
Burek	Ann
Finley	Judith R.
Freudenburg	Patti
Gilbert	Deirdre
Harvat	Beth
Hurley	Phyllis
Jones-Eddy	Julie
Kohler	Mara T.
Madden	Linda
Pritz	Flo
Rouse	Elizabeth P.
Sjaastad	Barbara
Townsley	Carol

**Dues Members
(\$25)**

Andrews	Mary E.
Barron	Gwendolyn
Beidleman	Dr. Richard G. & Linda
Bell	Essie
Bennett	Doris L.
Casey	Judith
Chojnacki	Margaret*
Christensen	Jane
Coffman	Lana*
Colgan	Marge
Coriell	Ellie
Davey	Lineah J.
DeVaney	Sharon
Dieter	Barbara W.
Dufault	Caitlin
Eccles	Trish*
Foster	Virginia
Fox	B.*
Gebben	Julia

Grinewich	Dee
Jefferson	Bea*
Johnson	Lynn A.
Kasten	Judith
Kisken	Sue & Bill
Kule	Patricia
Kunstle	Karen
McNellan	Mary
Moe	Patricia A.
Mulligan	Molly Jo
Nicks	Terry
Noll	Lisa
Olney	Kathryn W.
Peterson	Lynn
Pullar	Kelsey
Roberts	Patricia C.
Sanger	Ann B.
Schreibman	Cayla
Seay	Janine
Simons	Frear (Janette)
Stark	Evelyn
Theobald	Rebecca
Tibbets	Shirlee
Trater	Paula D.
Warner	Phyllis J.
Weatherbee	Christiane
Young	Sharon
Zautke	Beth*

Ex-Officio

Edmonds	Mike
Tiefenthaler	Jill

Honorary Member

Stoller	Marianne
---------	----------

**Scholar Members
(honorary 1yr. Members)**

Anstadt	Erin
Burdi	Sarah
Griscom	Bailey
Hinkle	Lauren
Scally	Eliza

In Memoriam

We regret to inform our members of the deaths of:

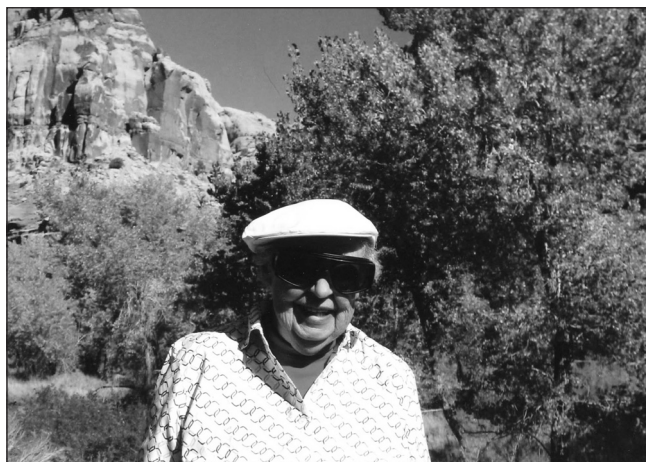
Carle	Eileen
Cremonesi	Mary
Francis	Betty
Pfeiffer	Patricia
Russell	Kitty
Thomas	Ellen
Wells	Christine

Help Needed For Future WES Trips Marianne Stoller Retires

We wish to thank Marianne Stoller for initiating and planning sixteen highly successful WES Trips. Many of us have enjoyed traveling with her and learning from her amazing expertise. The income generated for the WES Scholarship Fund through Marianne's efforts has directly benefited our scholars and can never be duplicated.

We sadly report that Marianne needs to step down from her role as tour leader. She continues to have ideas and thoughts of future possibilities. Even though Marianne is irreplaceable, we might be able to offer additional trips if we can find volunteers interested in assisting with planning and logistics.

Anyone who wishes to express ideas about this or who wants more information should leave a message for us at (719) 389-7699. We will respond to all callers in a timely manner.



The WES Scholarship Fund has benefited greatly from our trips. All potential participants send a non-refundable deposit directly to tour organizer Marianne Stoller. We greatly appreciate the contributions made in 2011 by the people listed below.

Marge Abbott	\$200	Bea Jefferson	\$100
James Allen	\$100	Judy Jones	\$100
Duane and Mary Andrews	\$200	Marianne Katte	\$200
Beth Ann Bassein	\$200	Jim and Marty Keene	\$200
Linda Bliss	\$100	Jean Keeley	\$100
Mary Ellen Burciago	\$100	Beatrix Kelsay	\$100
Ann Burek	\$200	Lucille McLeod	\$600
Barbara Byerly	\$100	Gayle McClanahan	\$100
Richard and Mary Kay Carlson	\$200	Bob and Jane Neff	\$200
Phillip and Elaine Carney	\$200	Sandra Raudabaugh	\$200
Mike and Linda Crissey	\$200	Sharon Rice	\$200
Sharon Devaney	\$100	Tom and Hilde Simco	\$200
Judy Druelinger	\$100	Barbara Sjaastad	\$200
Betty Enderson	\$300	Marianne Stoller	\$400
Greg and Lesley Flaks	\$200	Marjorie Von Frantzius	\$100
Susan Greene	\$100	Cena Weatherford	\$100
Elizabeth and William Hall	\$200	Janet Zajac	\$100
Spot Holmes	\$100		

We would also like to express our sincere gratitude to Sharon Rice. Her assistance to Marianne Stoller in planning and organizing the 2011 WES trips was invaluable.

We thank Alice Aronovitz who contributed to the WES Scholarship Fund in memory of Anne Cross during 2011.

MEMBERSHIP INFORMATION

Dues for Regular Members are payable anytime from January 1 to December 31. If you would like to pay your 2012 dues now, please fill out the Membership Form below and return it along with your check.

Life, Silver Special, Ex-Officio and Honorary Members do not pay dues but are encouraged to support WES by making an annual contribution to the WES Scholarship Fund. Contributions made by these members are 100% tax deductible. **Acknowledgment letters suitable for 2012 tax purposes will be mailed to all members in January of 2013.**

To those of you who are not already members, WES extends an invitation for you to join our group. Every member is welcome to serve on a WES committee. Check the box below if you are interested and a WES Board Member will contact you. We look forward to having your support.

If you have questions, send a message to us at WES@coloradocollege.edu or call our voice mail number: (719) 389-7699. Our website, www.ColoradoCollege.edu/WES, is a great way to learn about our programs, events and scholars. You can also "like" us on Facebook.



THE WOMAN'S EDUCATIONAL SOCIETY
of THE COLORADO COLLEGE

MEMBERSHIP FORM

WES membership is open to all. Please select one of the following membership categories and make your check payable to WES. All contributions above the \$25 annual membership dues are used directly for scholarships, programs, and projects of WES to benefit students of Colorado College and are tax deductible.

<input type="checkbox"/> Annual Dues \$25	<input type="checkbox"/> Magna Cum Laude \$100-\$499
<input type="checkbox"/> Baccalaureate \$26-\$49	<input type="checkbox"/> Summa Cum Laude \$500 and above
<input type="checkbox"/> Cum Laude \$50-\$99	<input type="checkbox"/> Life, Silver Special, Ex-officio, Honorary

I am a new member. I am renewing my membership.
 contribution to Scholarship Fund only
 I'd like someone to call me about volunteering for WES.

Name _____ Amount Enclosed \$ _____

Address _____

Phone _____ E-Mail _____

Send to:

The Woman's Educational Society of The Colorado College
14 East Cache La Poudre Street, Colorado Springs, CO 80903



COLORADO COLLEGE
THE WOMAN'S EDUCATIONAL SOCIETY
of THE COLORADO COLLEGE

14 East Cache La Poudre Street
Colorado Springs, CO 80903

Non-Profit Organization
U.S. Postage
PAID
Permit No. 105
Colorado Springs, CO

Winter 2012



WES is a Place for Friends